

APPENDIX A

RECORD SECTIONS

The record sections presented below were plotted as follows. Reducing velocity is 6 km/s. All traces are represented, but we have plotted only positive trace fills and not the trace itself. Traces are plotted from south (left) to north (right) as shown in Figure 13. For offset shots, we show 2 sections; one with an automatic-gain-control (AGC) window of 2 sec, to emphasize all arrivals, and one with an AGC window of 12 sec, to emphasize only the strongest arrivals. Changes in instrument type along the line account for the changes in appearance of arrivals. For example, PRS1's and SCR's emphasize longer-period arrivals (e.g. surface waves). The instrument type for each trace is indicated in the trace header field (bytes 211-214) of the SEG-Y data on the magnetic tapes (see Tables 4, and 6). Profile numbers are the deployment numbers.

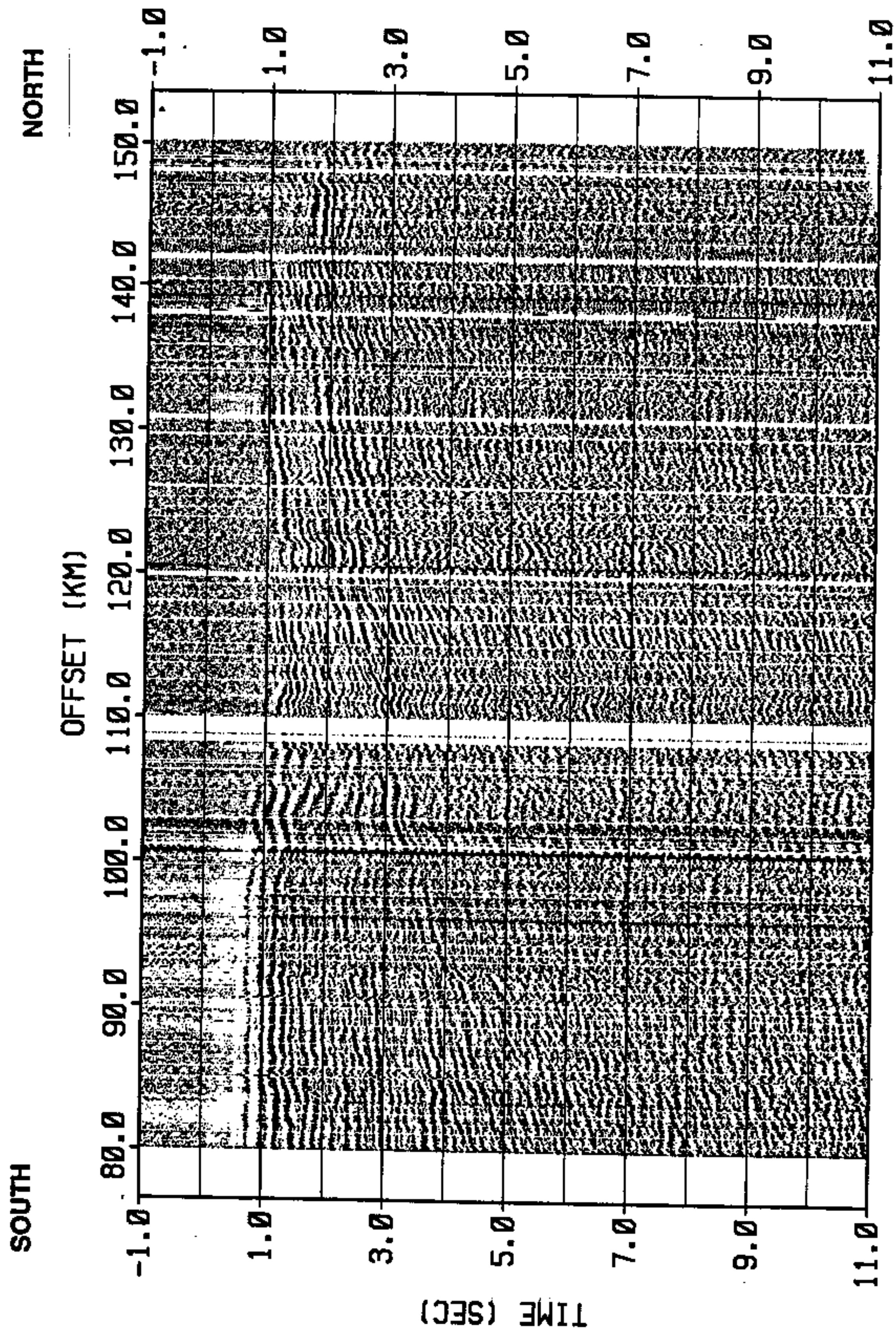


Figure 13 Profile 1
 Shot 1 Shot Point 154 AGC = 2 sec

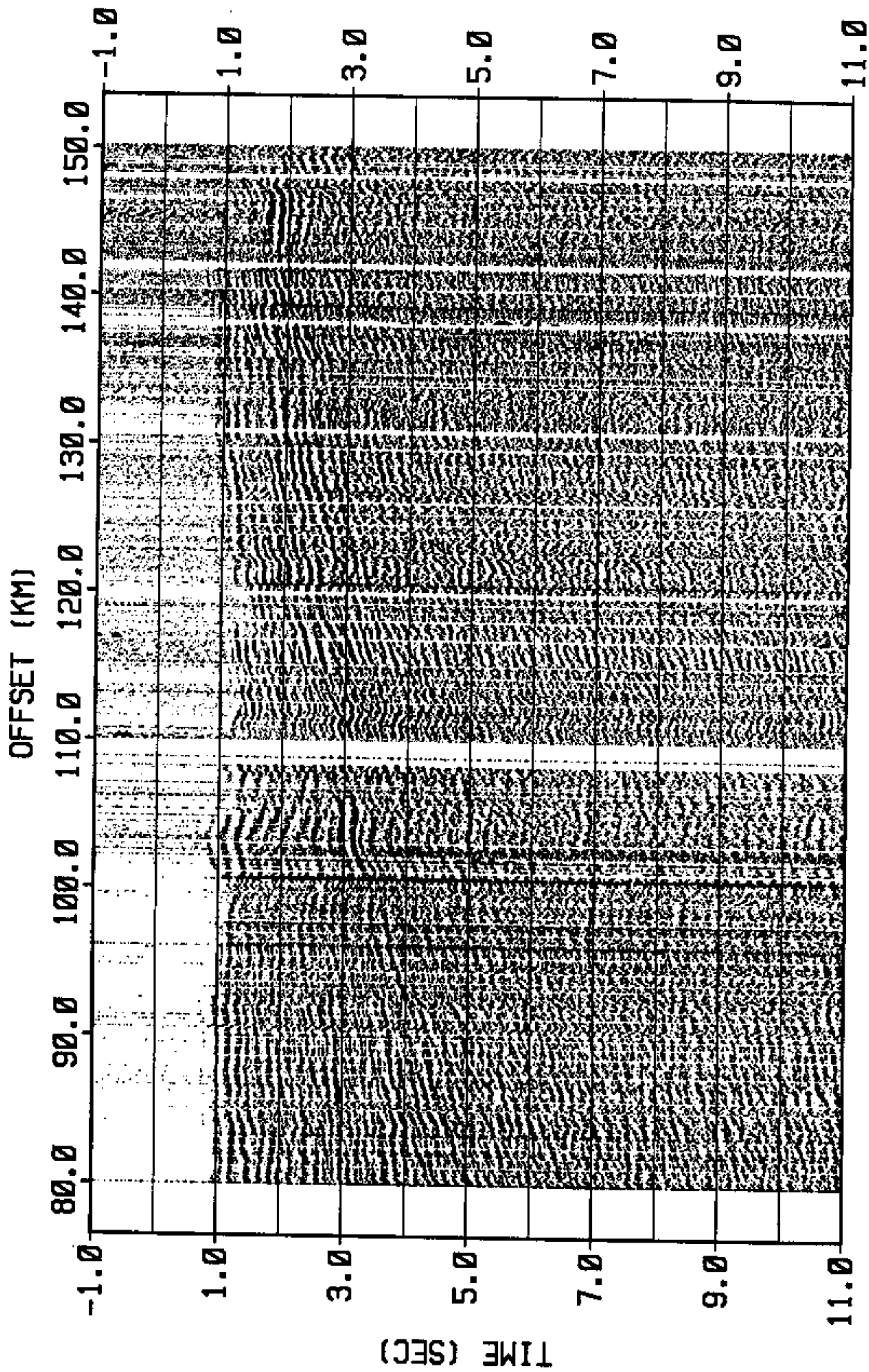


Figure 14 Profile 1
Shot 1 Shot Point 154 AGC = 12 sec

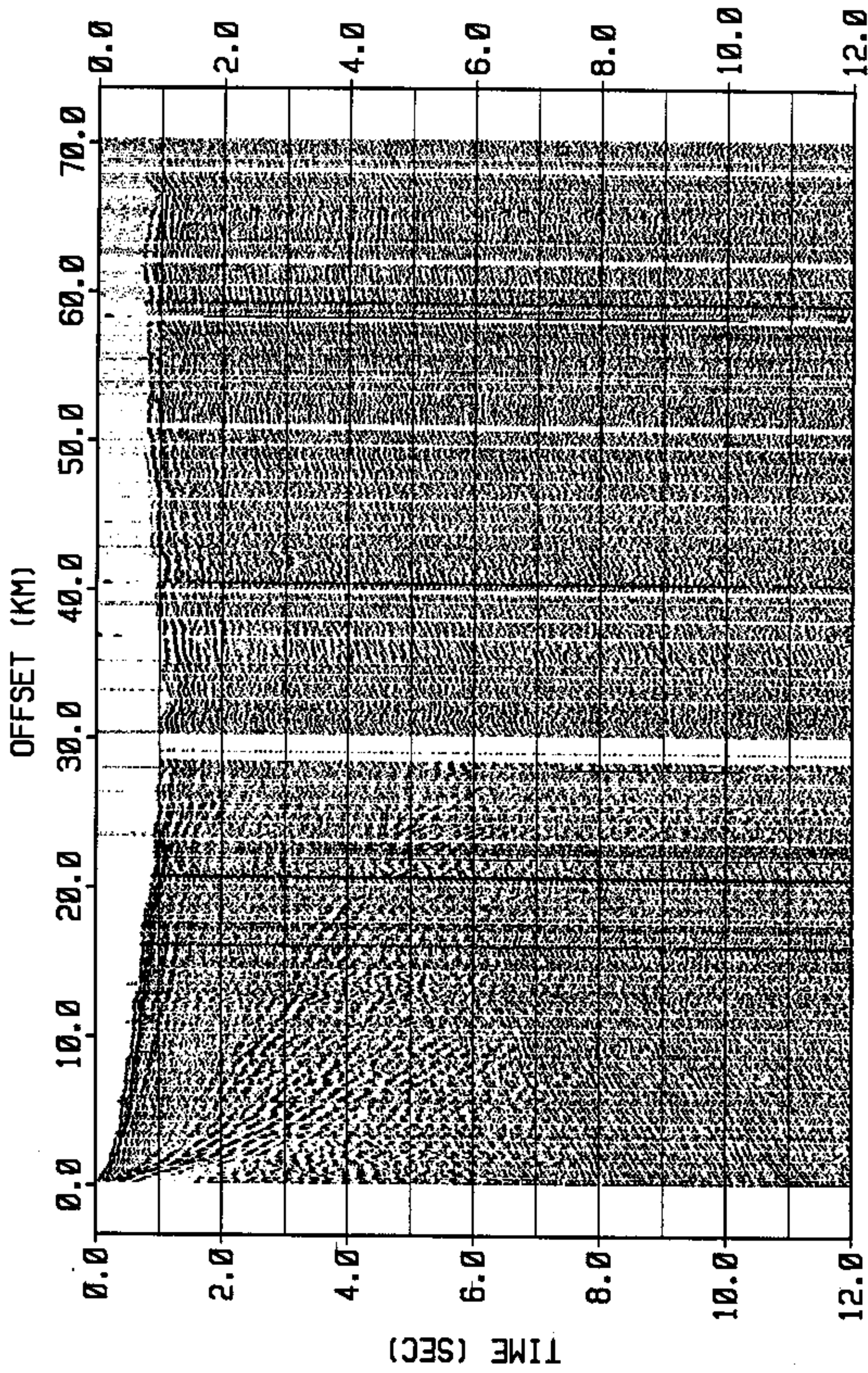


Figure 15 Profile 1
Shot 2 Shot Point 120 AGC = 2 sec

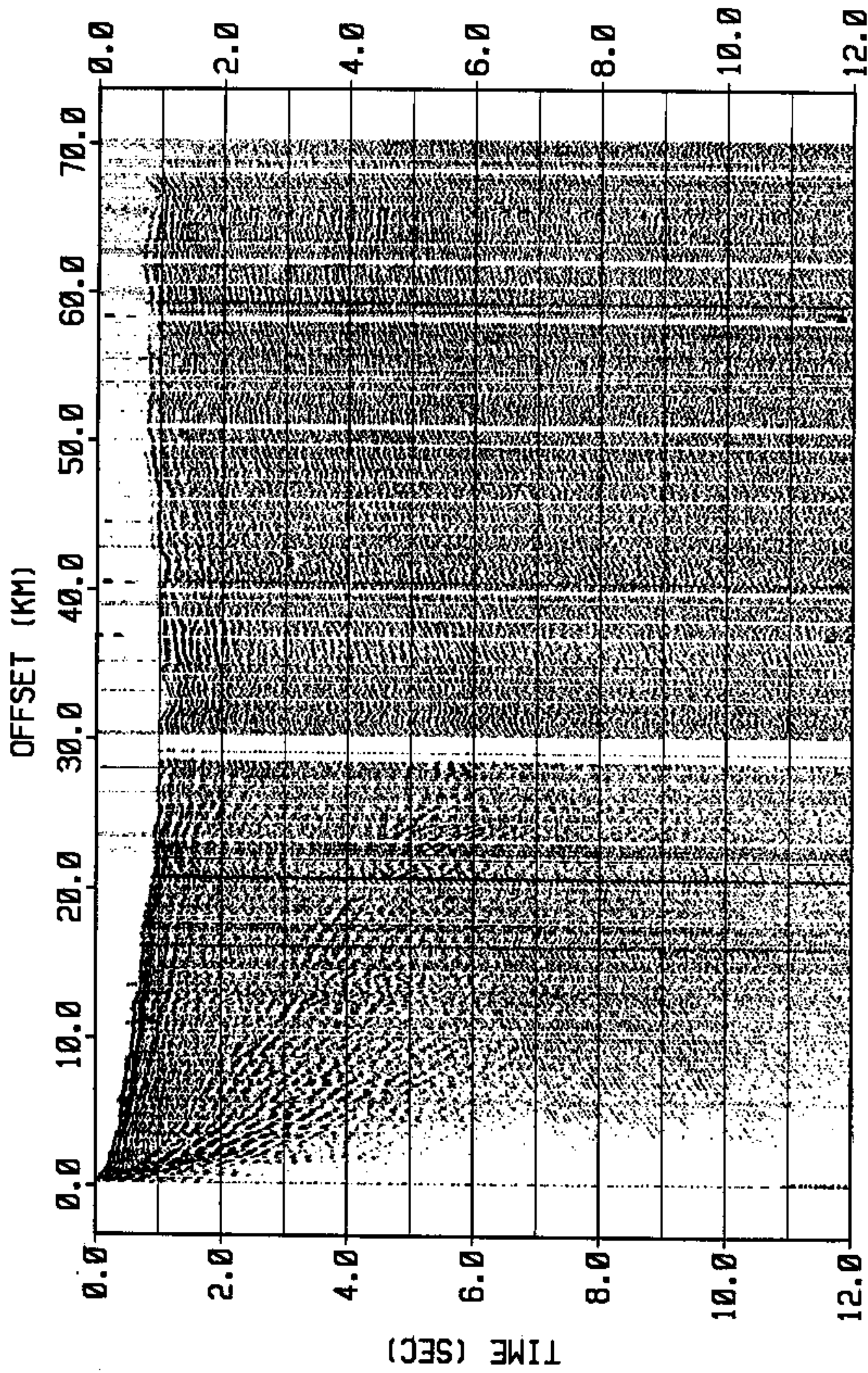


Figure 16 Profile 1
 Shot 2 Shot Point 120 AGC = 12 sec

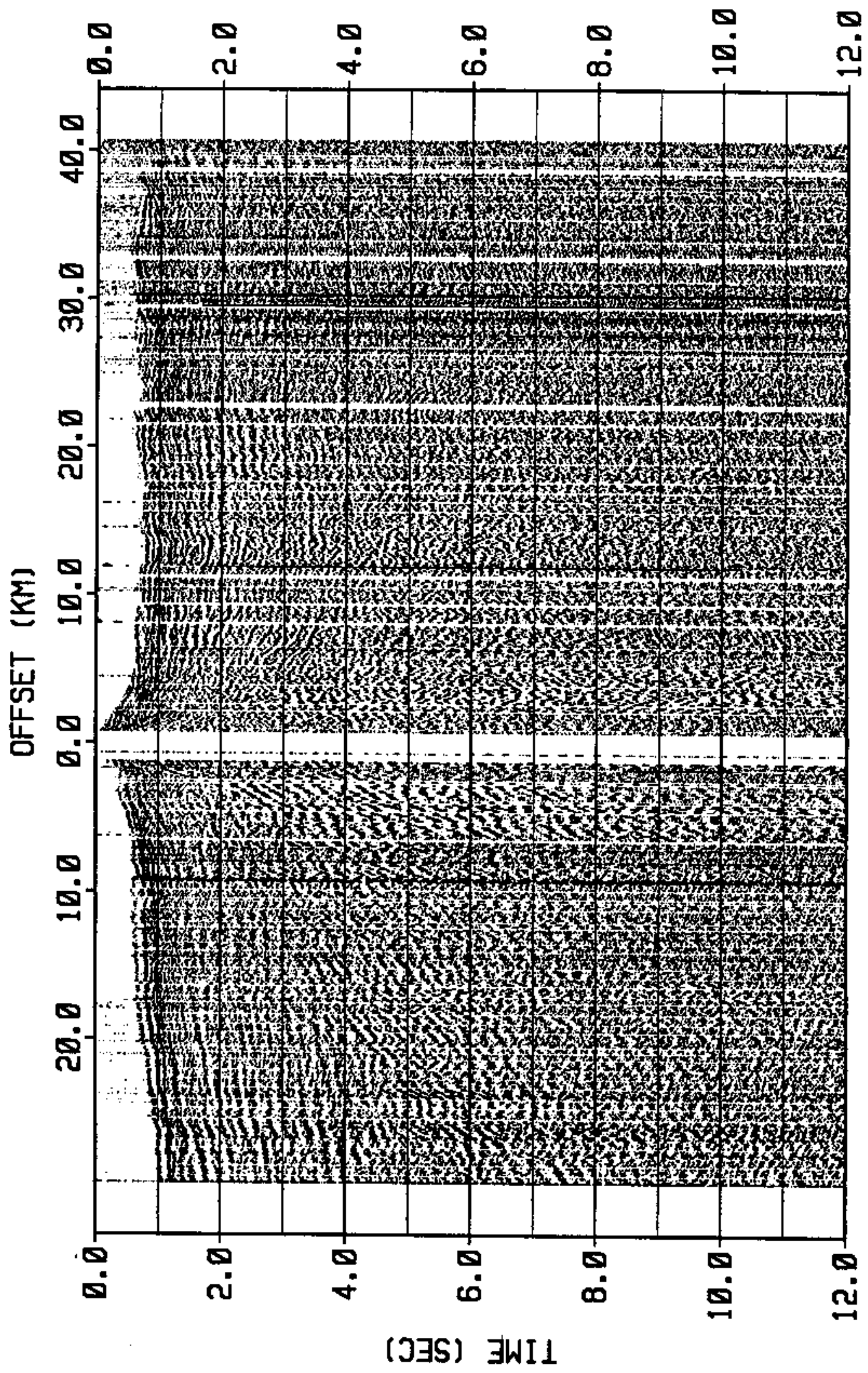


Figure 17 Profile 1
 Shot 3 Shot Point 122 AGC = 2 sec

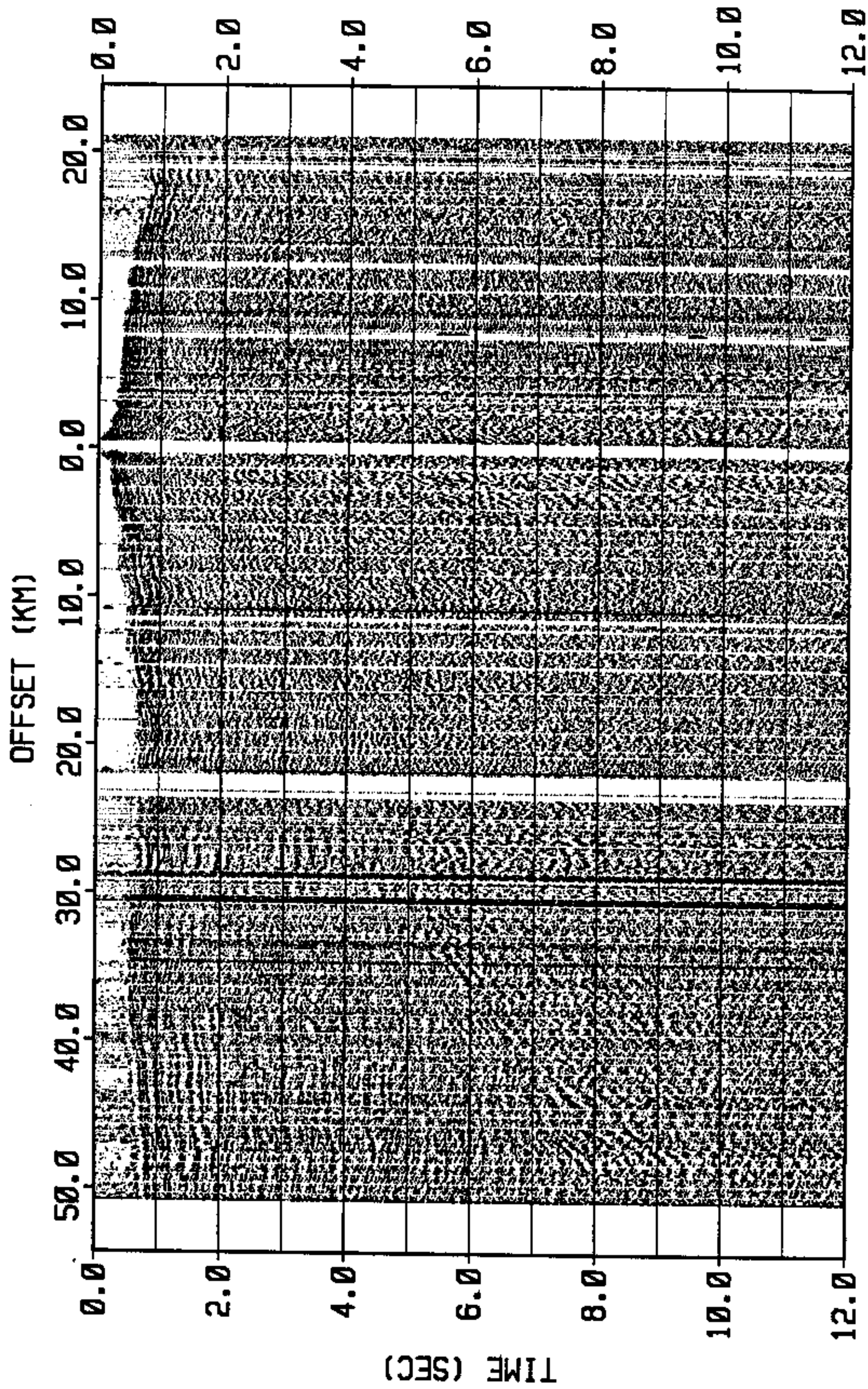


Figure 18 Profile 1
Shot 4 Shot Point 124 AGC = 2 sec

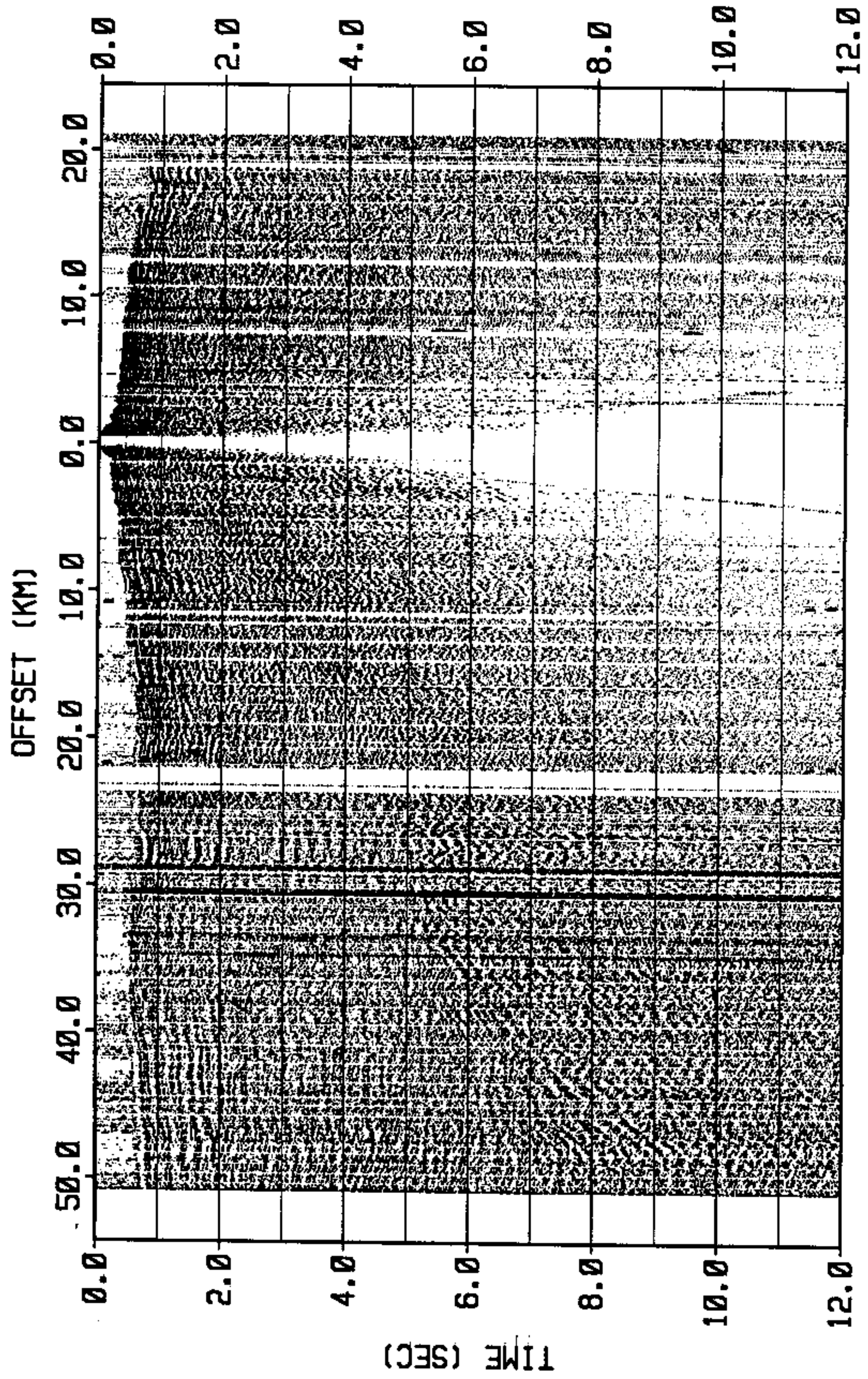


Figure 19 Profile 1
Shot 4 Shot Point 124 AGC = 12 sec

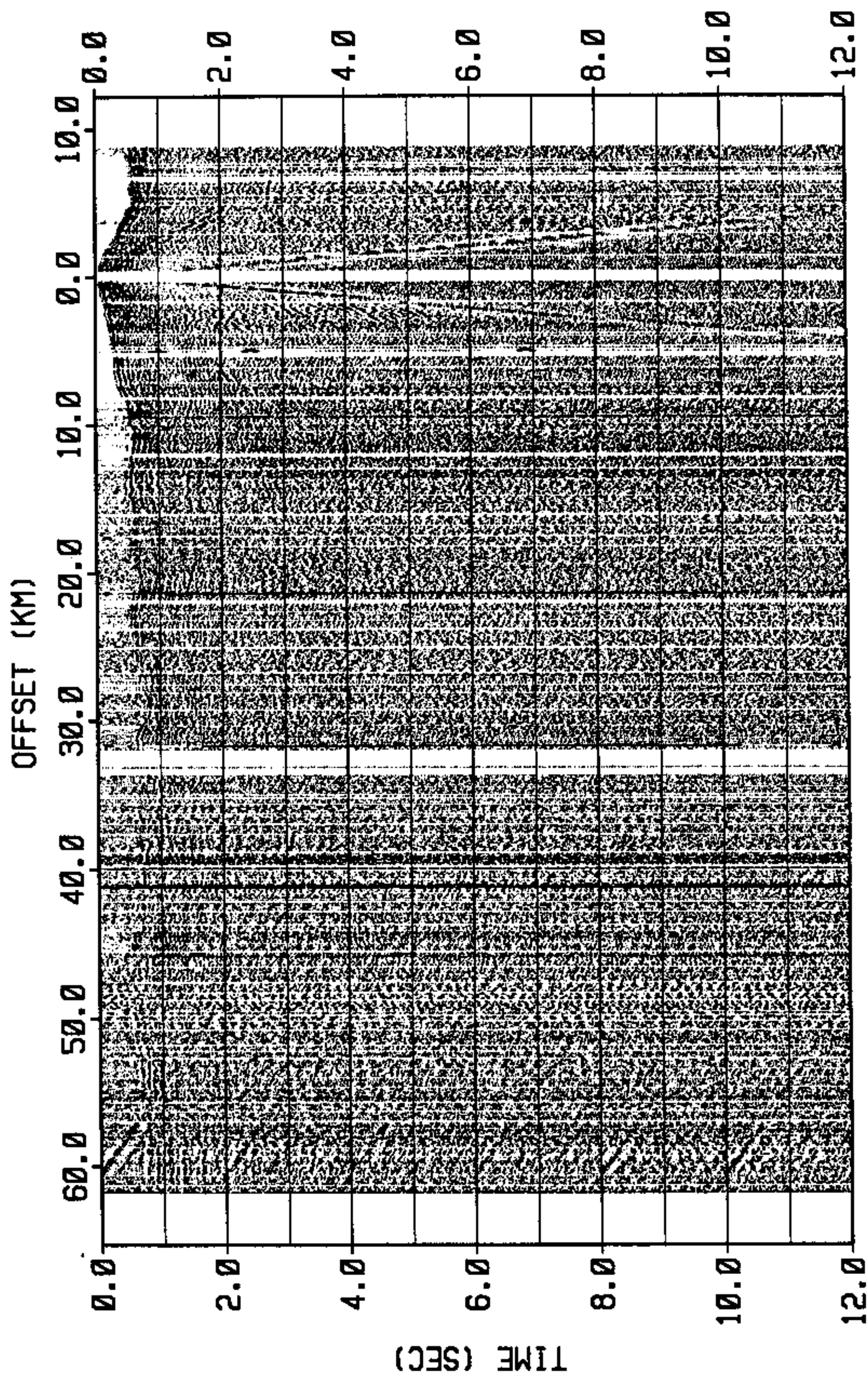


Figure 20 Profile 1
 Shot 5 Shot Point 170 AGC = 2 sec

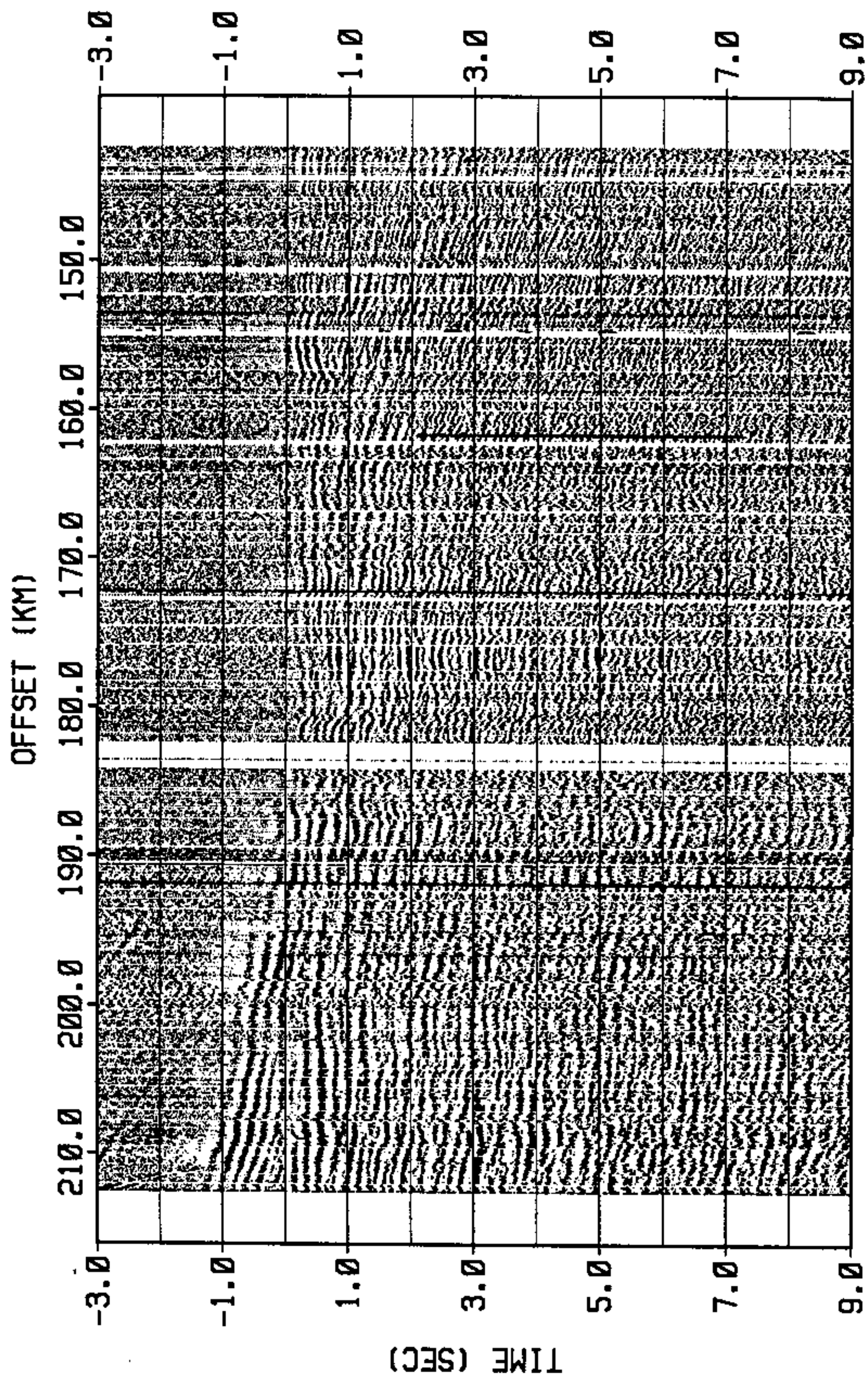


Figure 21 Profile 1
 Shot 6 Shot Point 140 AGC = 2 sec

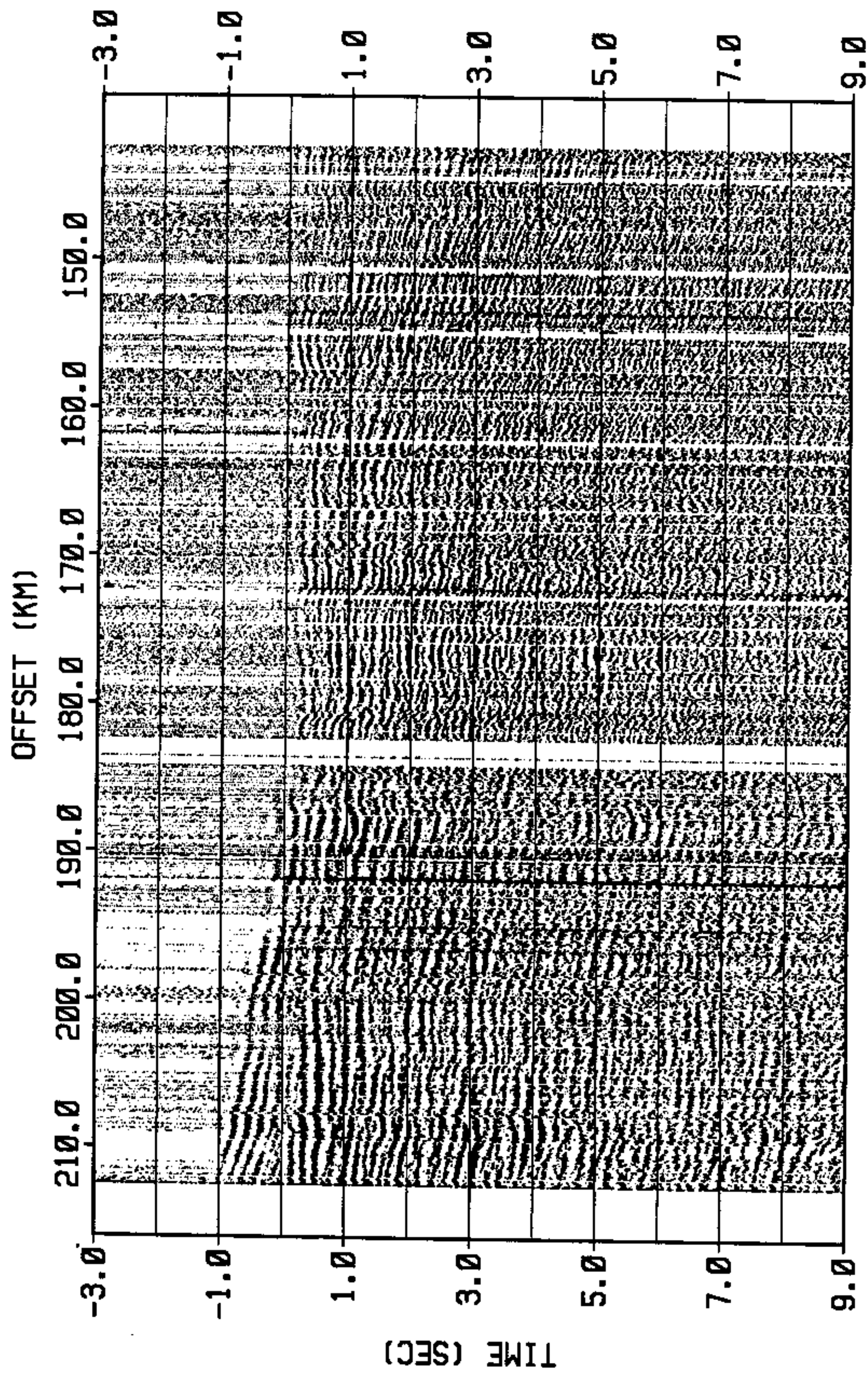


Figure 22 Profile 1
 Shot 6 Shot Point 140 AGC = 12 sec

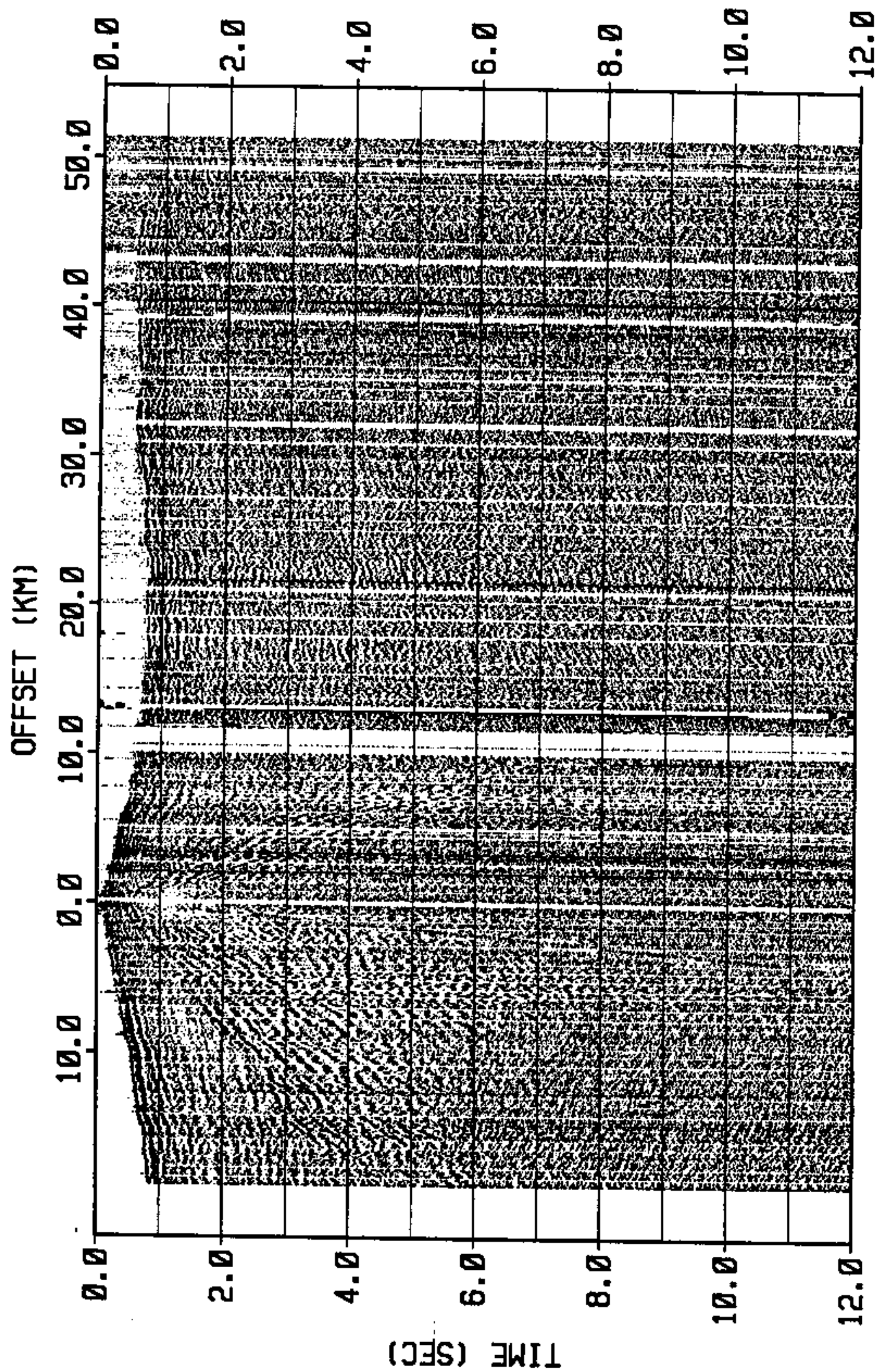


Figure 23 Profile 1
Shot 7 Shot Point 121 AGC = 2 sec

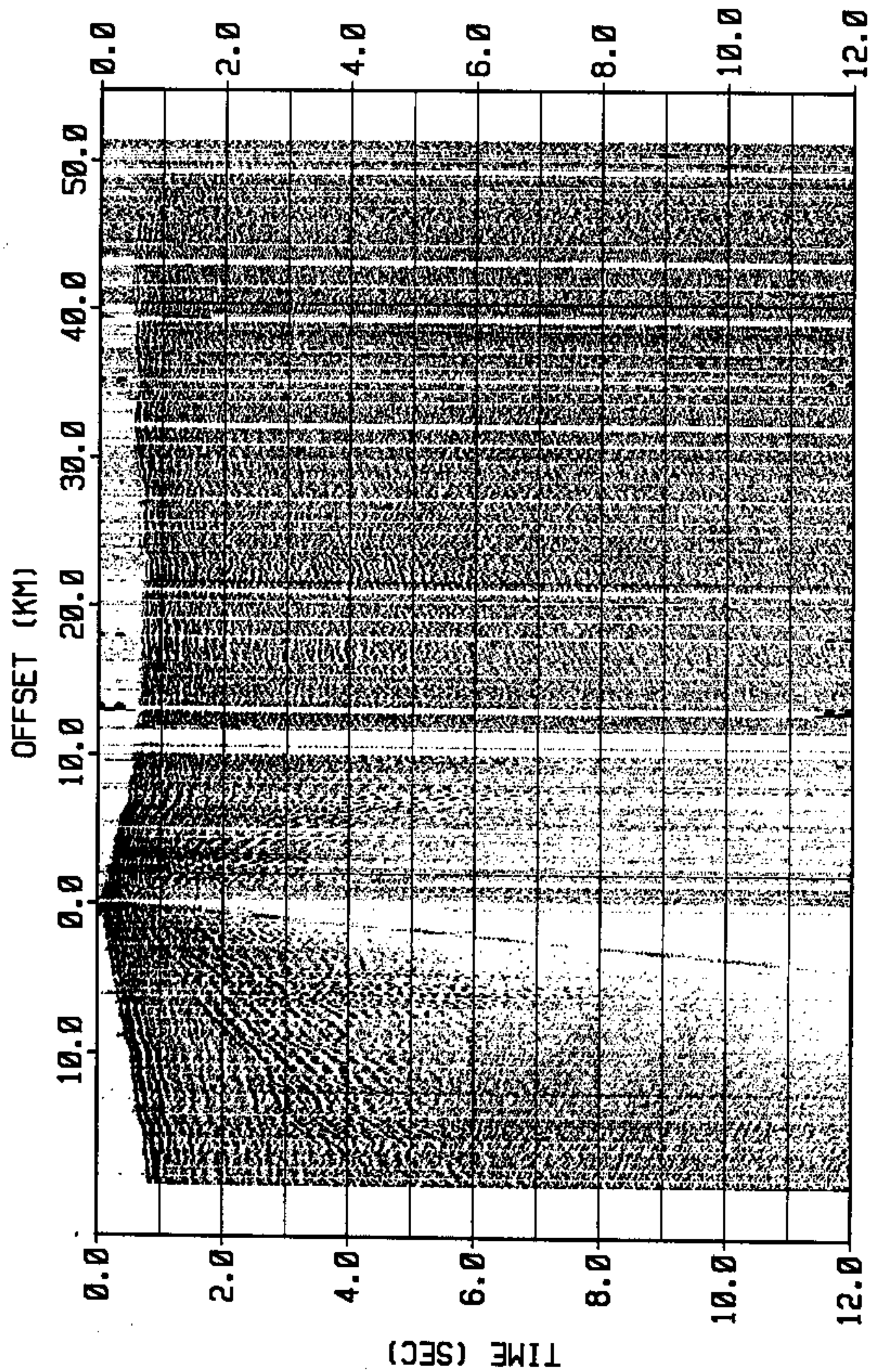


Figure 24 Profile 1
Shot 7 Shot Point 121 AGC = 12 sec

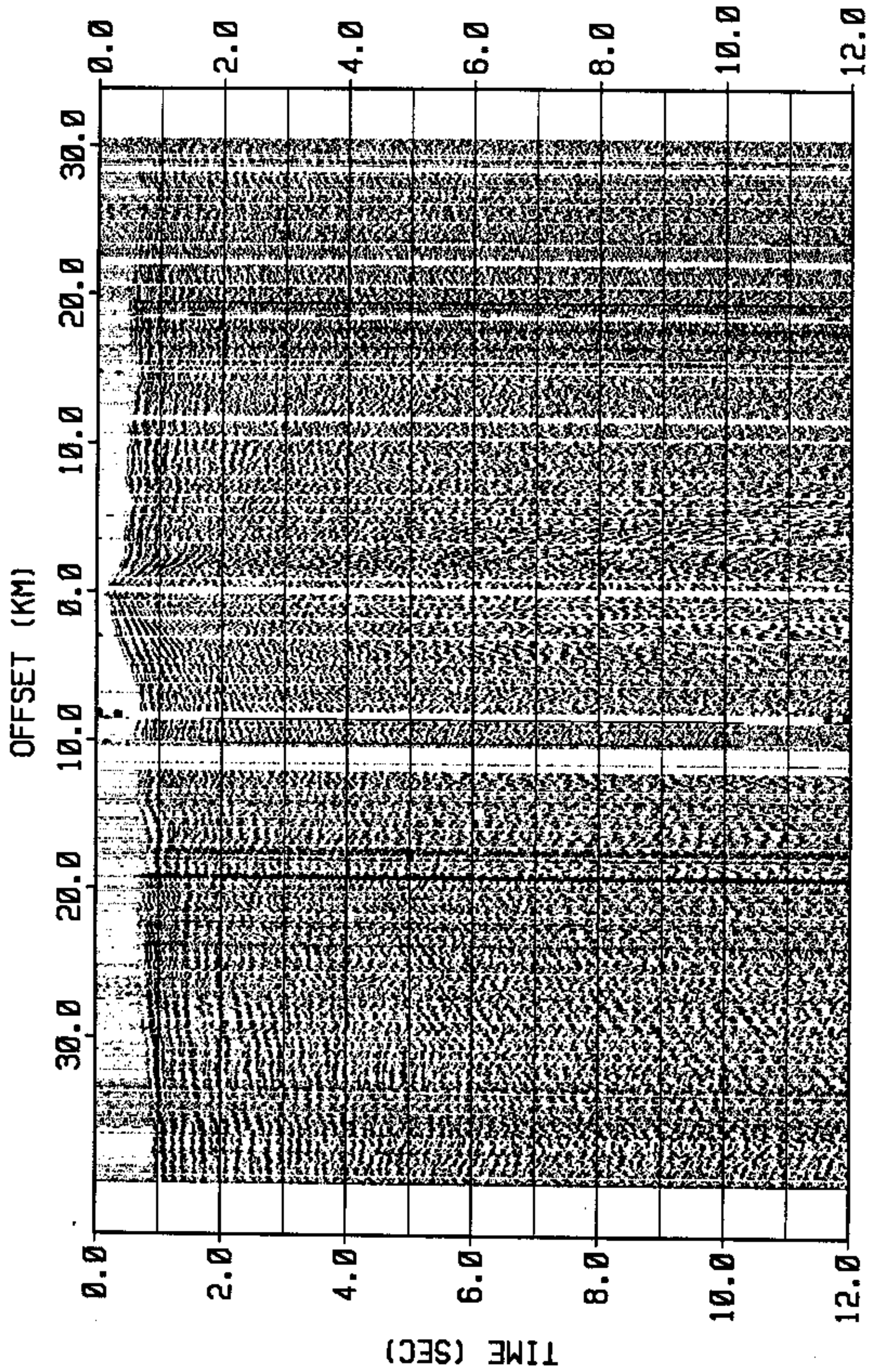


Figure 25 Profile 1
Shot 8 Shot Point 123 AGC = 2 sec

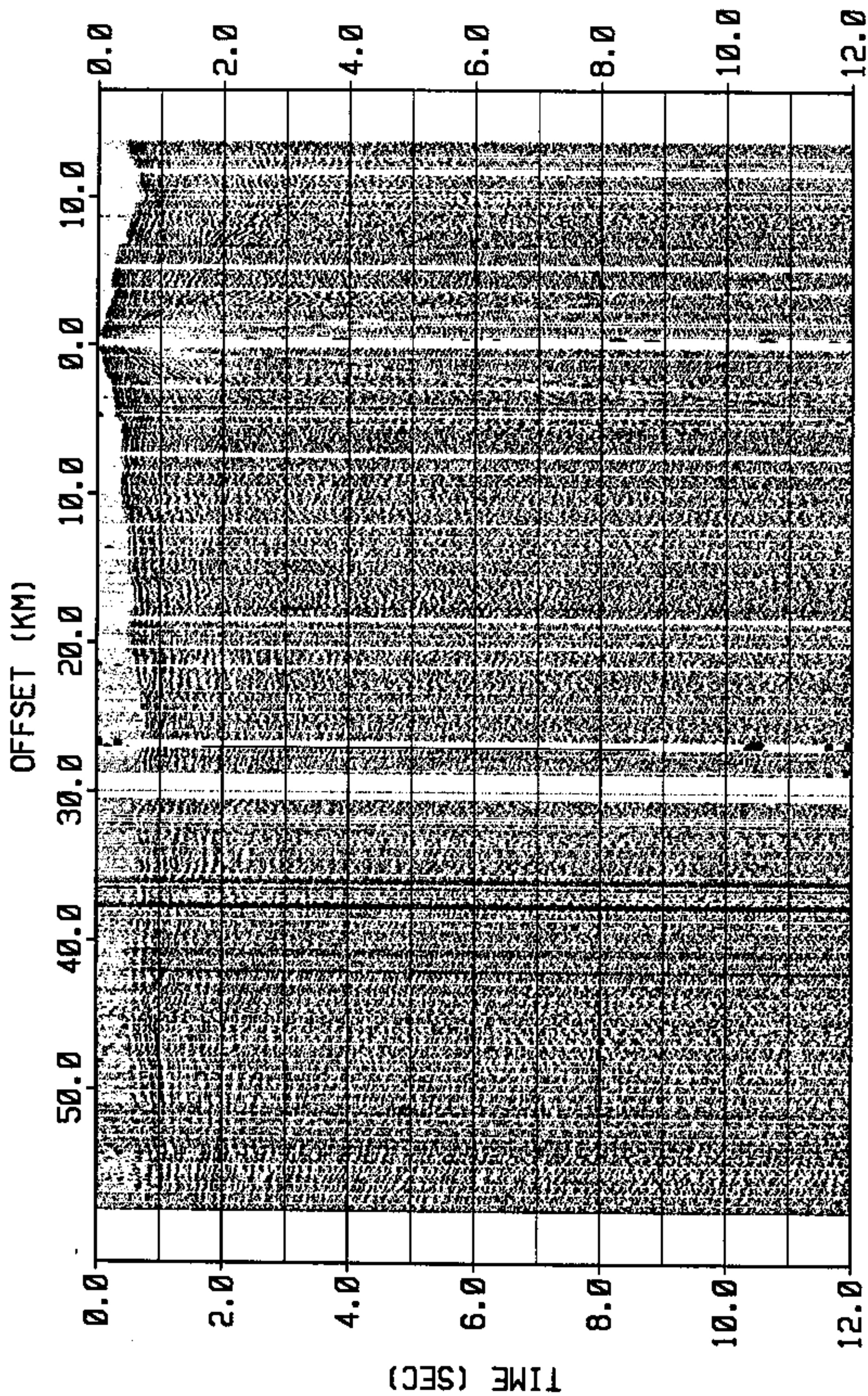


Figure 26 Profile 1
Shot 9 Shot Point 125 AGC = 2 sec

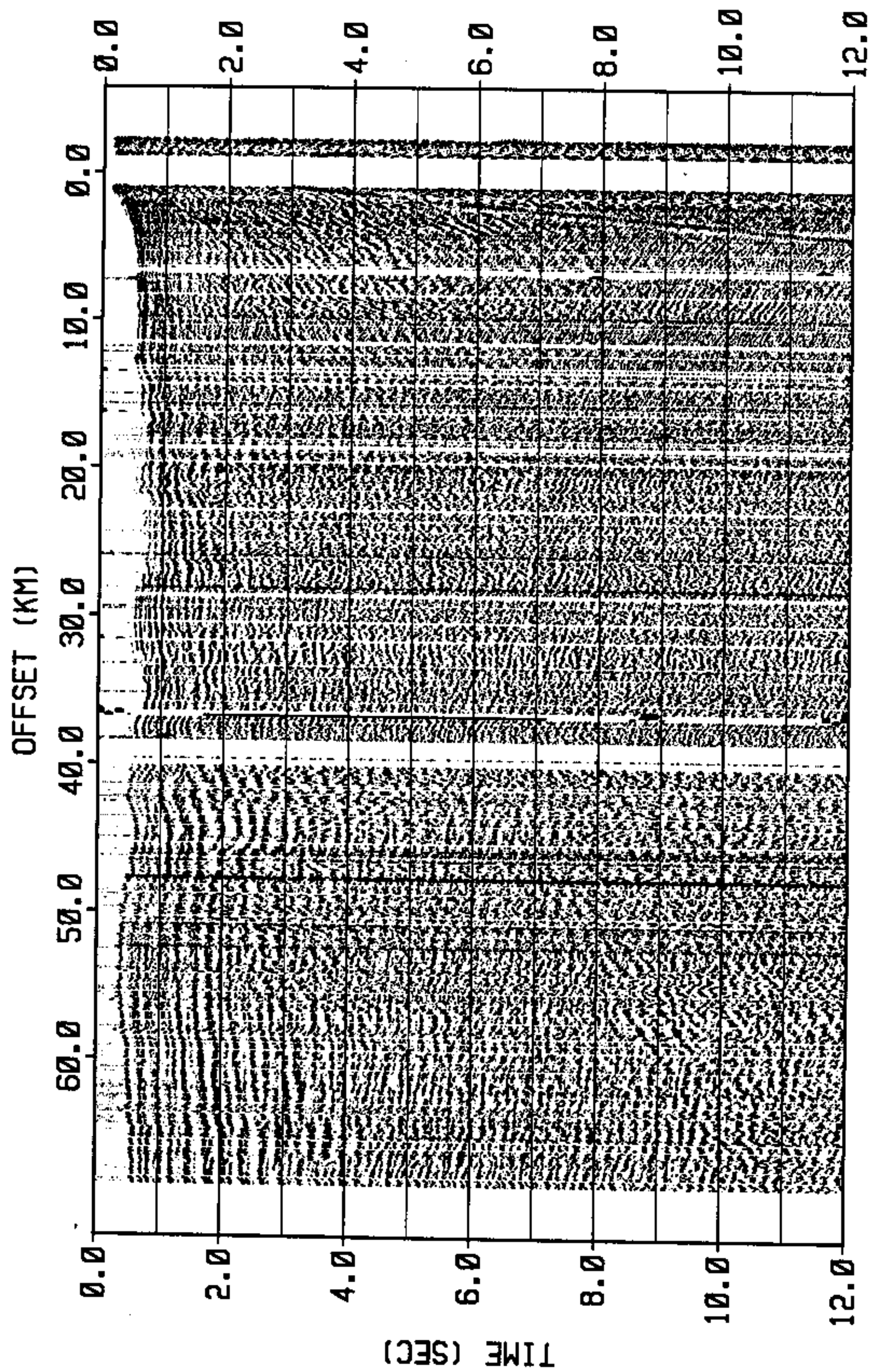


Figure 27 Profile 1
Shot 10 Shot Point 126 AGC = 2 sec

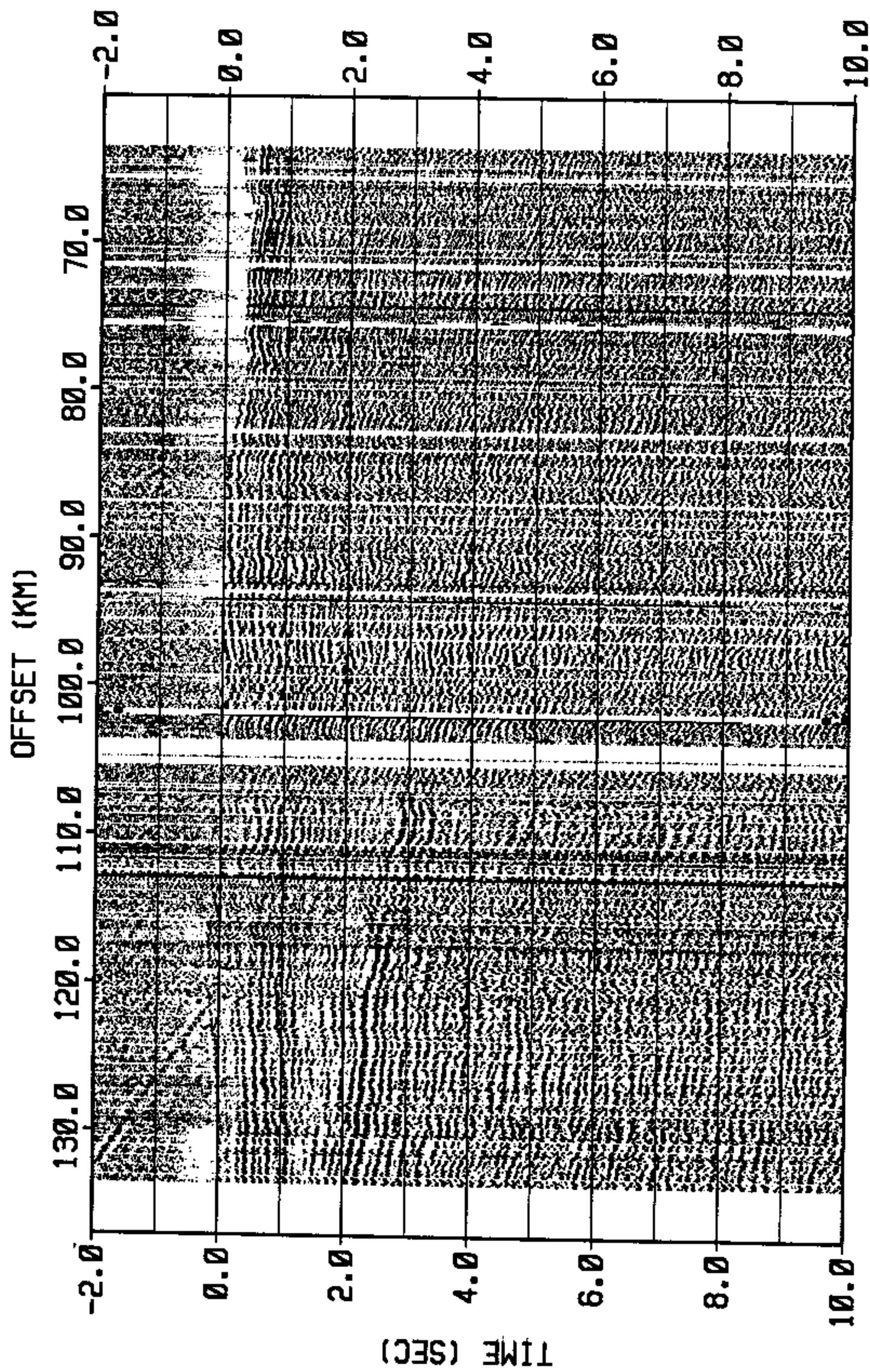


Figure 28 Profile 1
 Shot 11 Shot Point 132 AGC = 2 sec

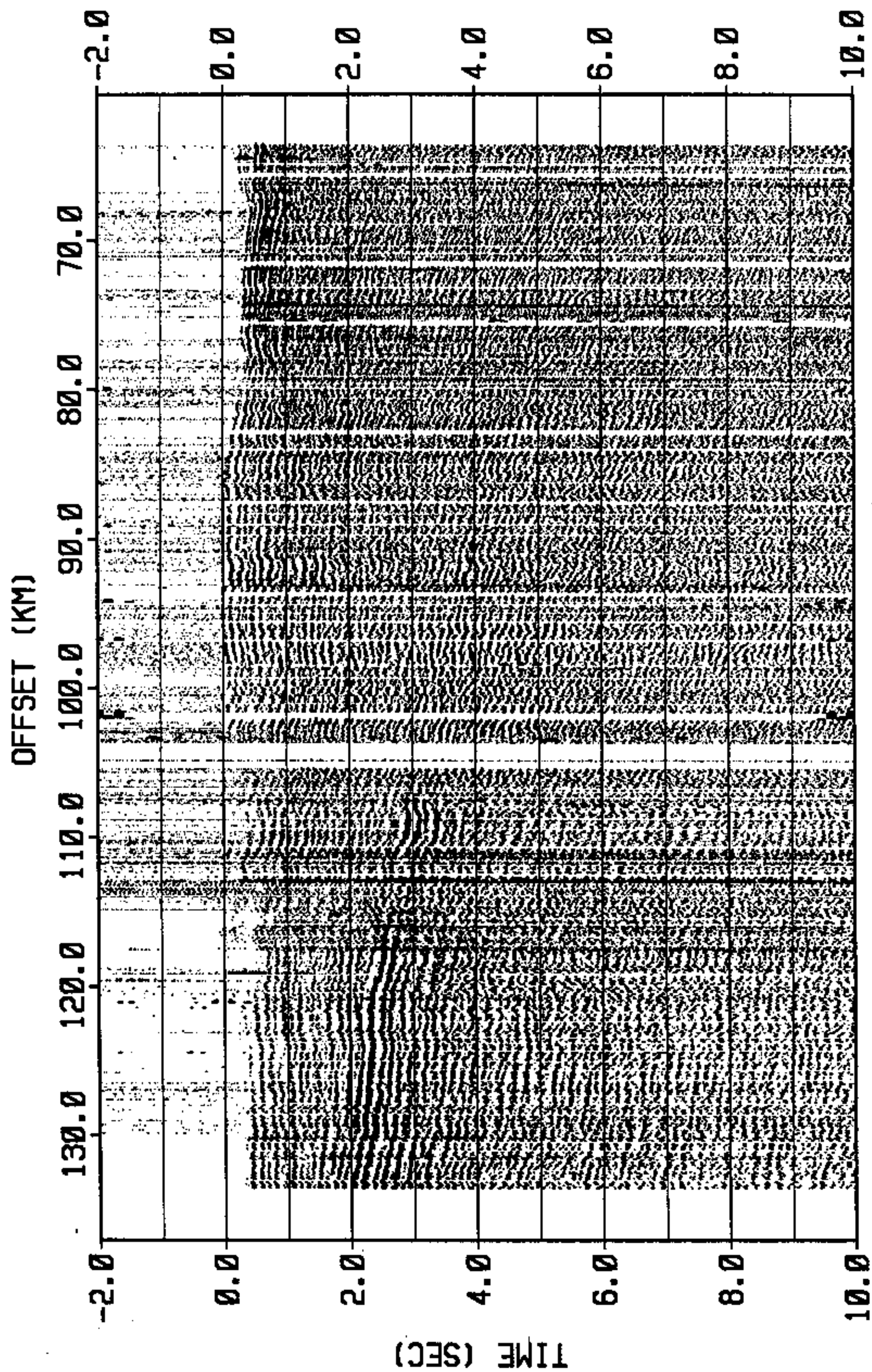


Figure 29 Profile 1
 Shot 11 Shot Point 132 AGC = 12 sec

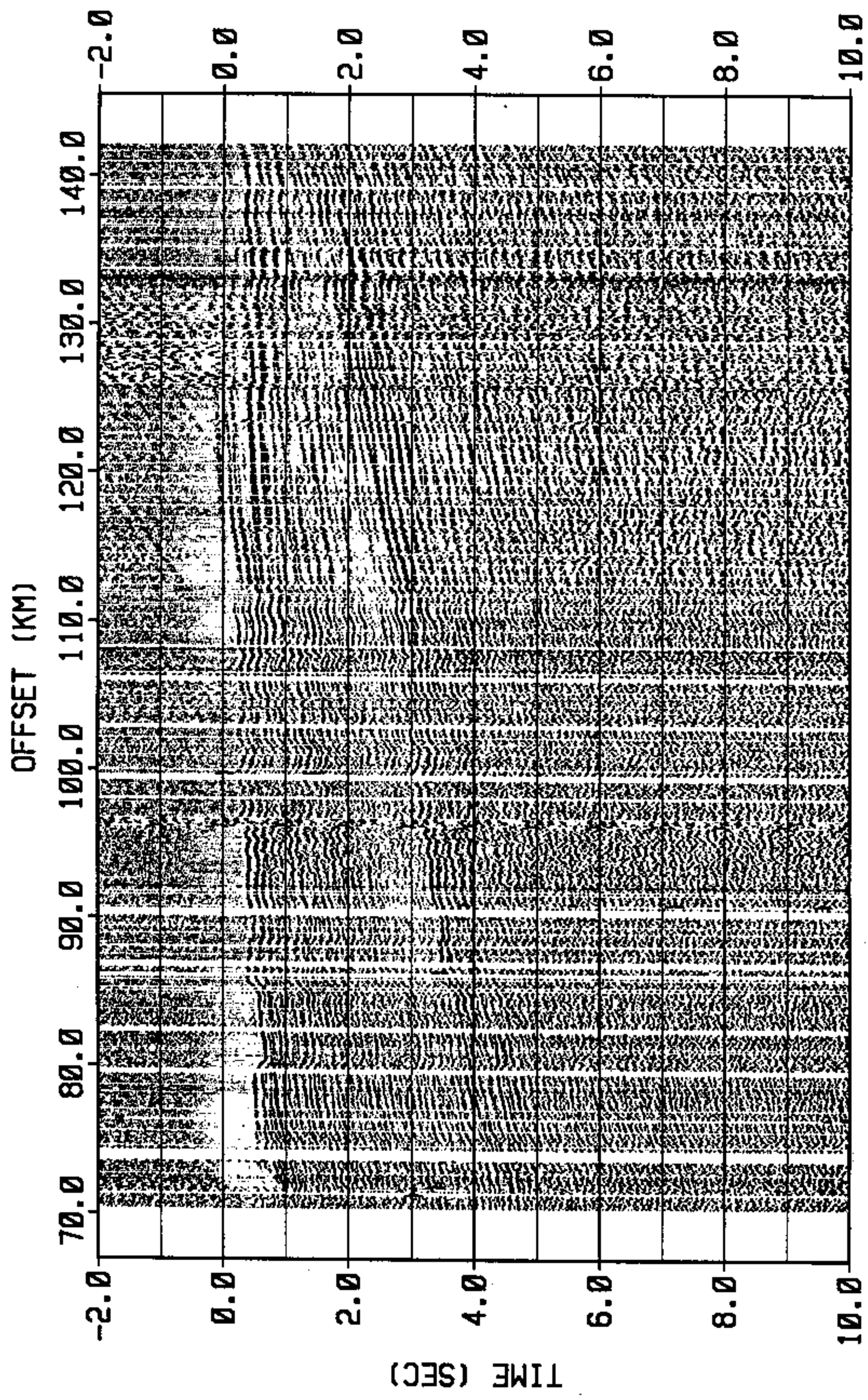


Figure 30 Profile 2
 Shot 12 Shot Point 120 AGC = 2 sec

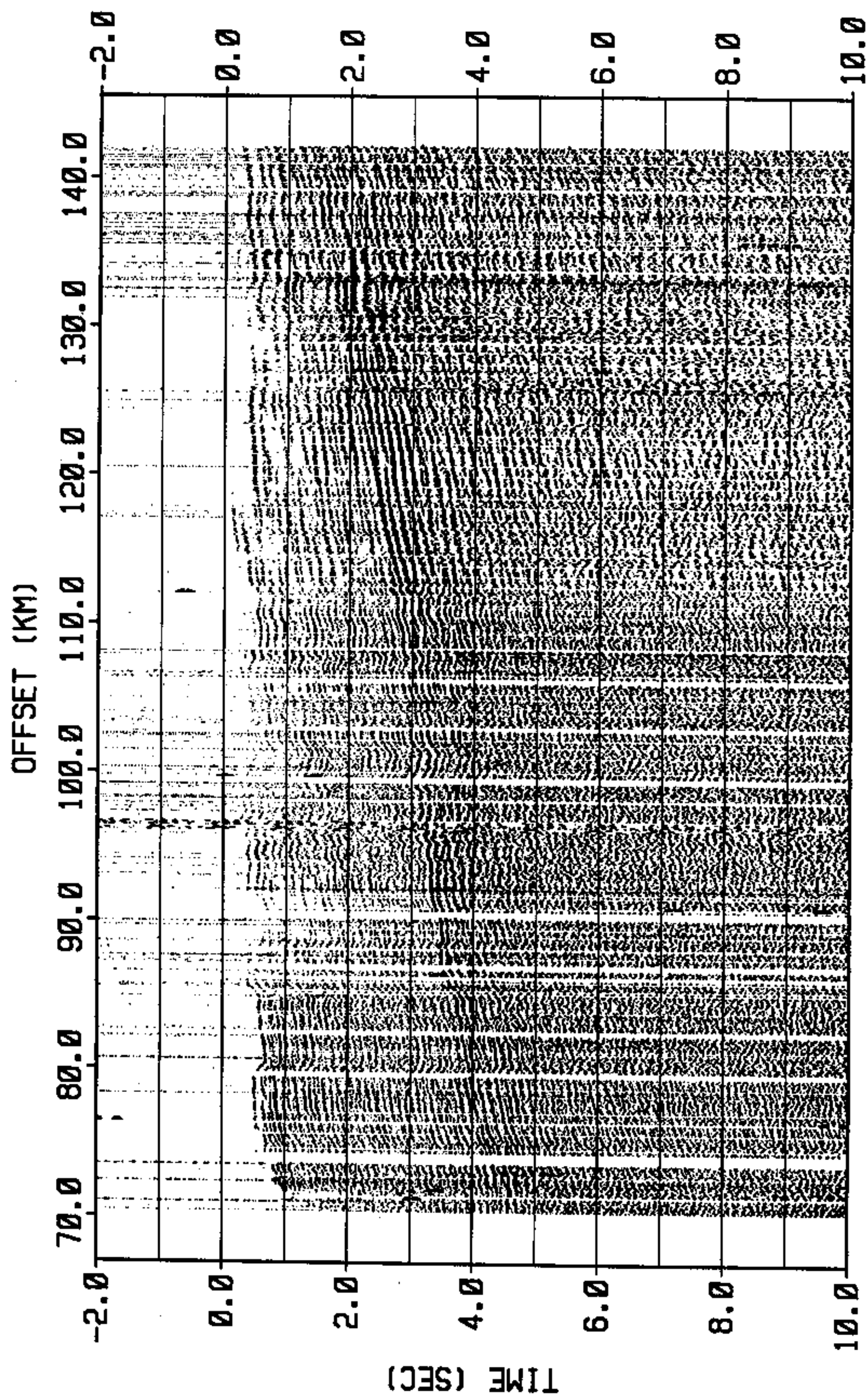


Figure 31 Profile 2
 Shot 12 Shot Point 120 AGC = 12 sec

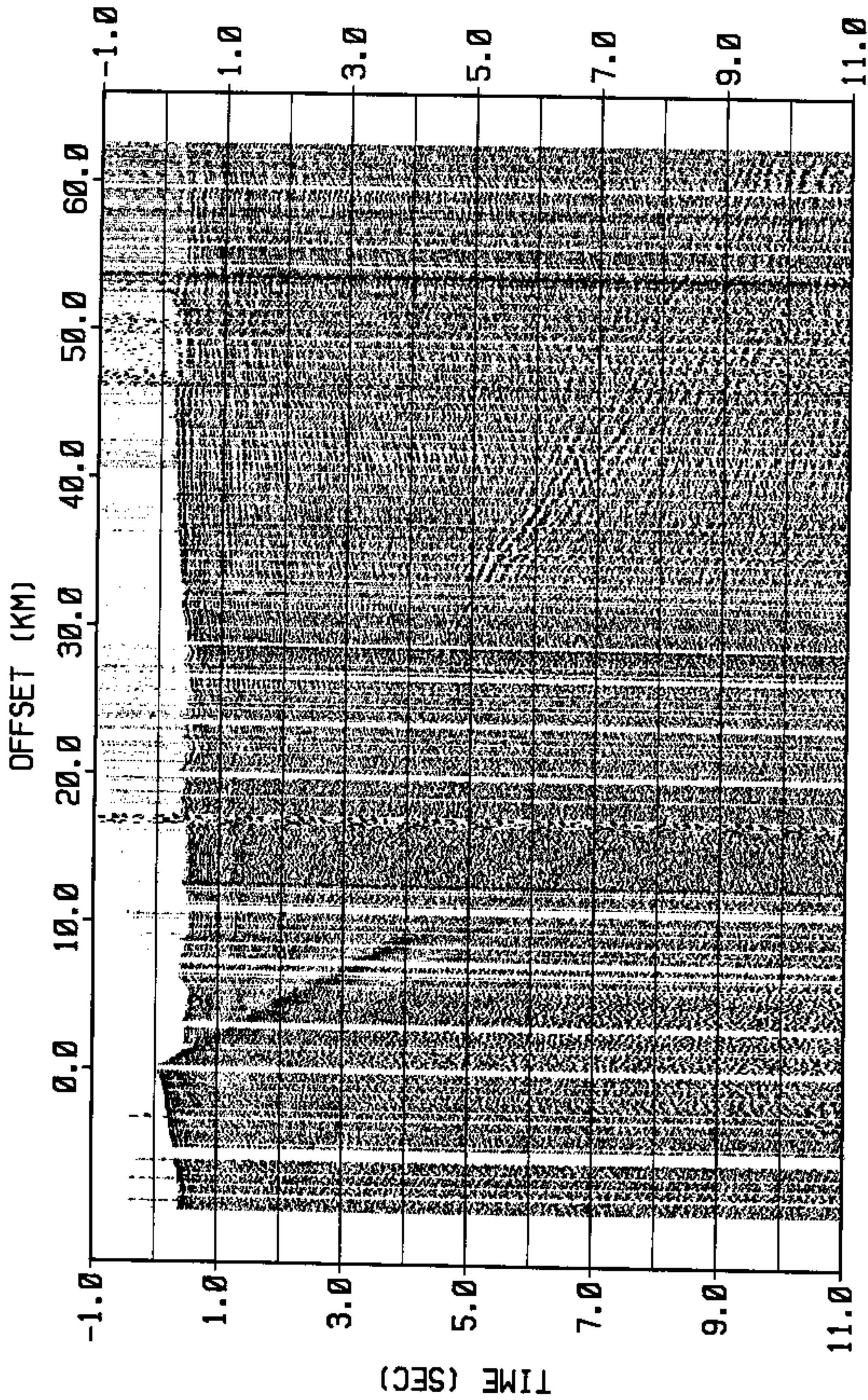


Figure 32 Profile 2
 Shot 13 Shot Point 127 AGC = 2 sec