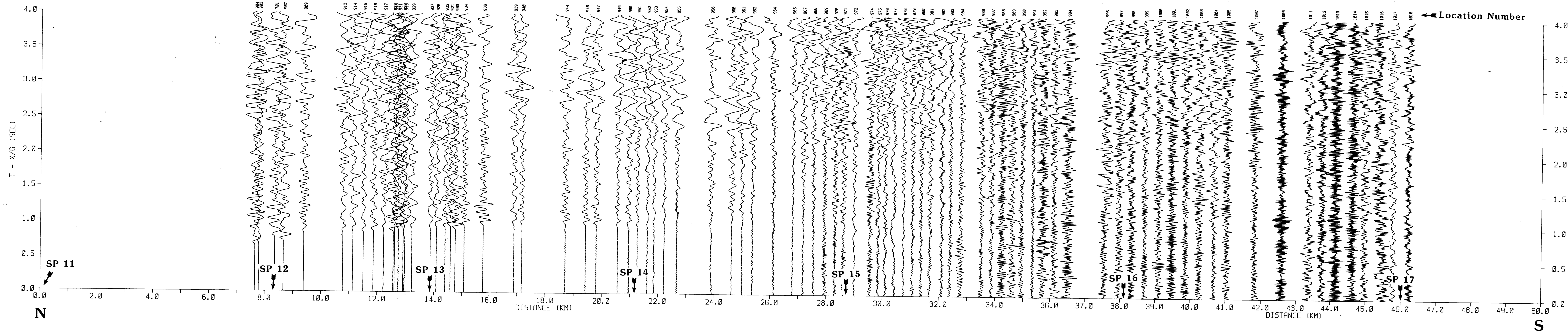


MAP OF YUCCA MOUNTAIN, BEATTY, AND VICINITY, SOUTHWESTERN NEVADA
 WITH SHOTPOINTS AND NUMBERED RECORDER SITE LOCATIONS

by Vickie D. Sutton
 1984

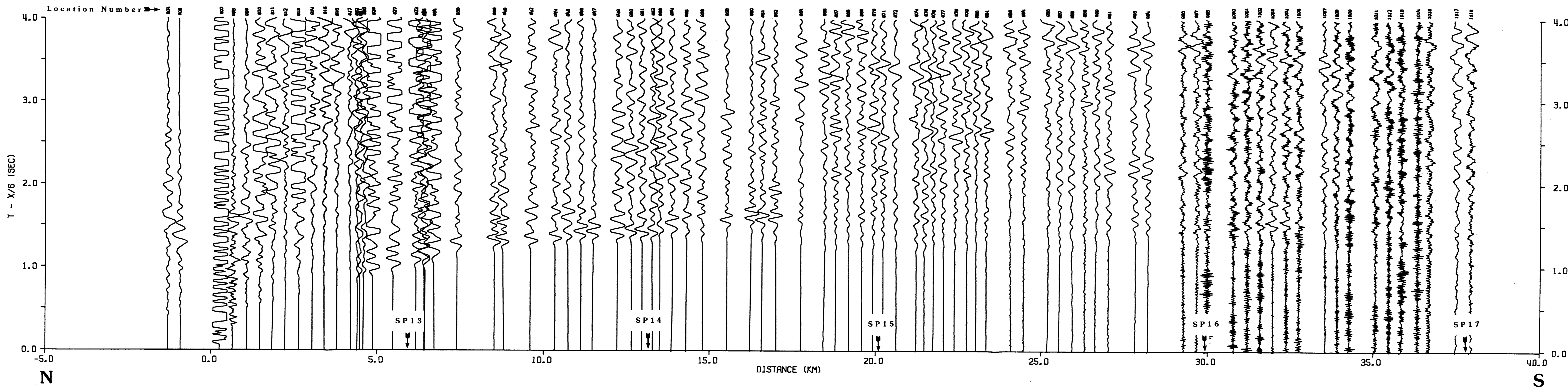
This map is preliminary and has not been reviewed for conformity with U.S. Geological Survey editorial standards and stratigraphic nomenclature.



RECORD SECTION- YUCCA MOUNTAIN, NEV.
 NORTH-SOUTH PROFILE SHOTPOINT 11

by
 Vickie D. Sutton
 1984

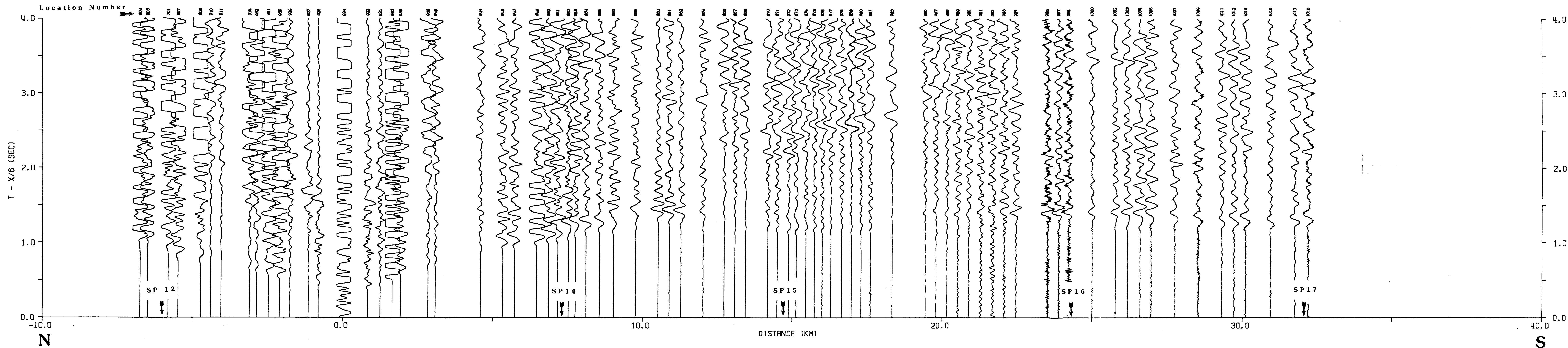
This report is preliminary and has not been reviewed for conformity with U.S. Geological Survey editorial standards.



**RECORD SECTION - YUCCA MTN. REGION
NORTH-SOUTH PROFILE - SHOTPOINT**

by
Vickie D. Sutton
1984

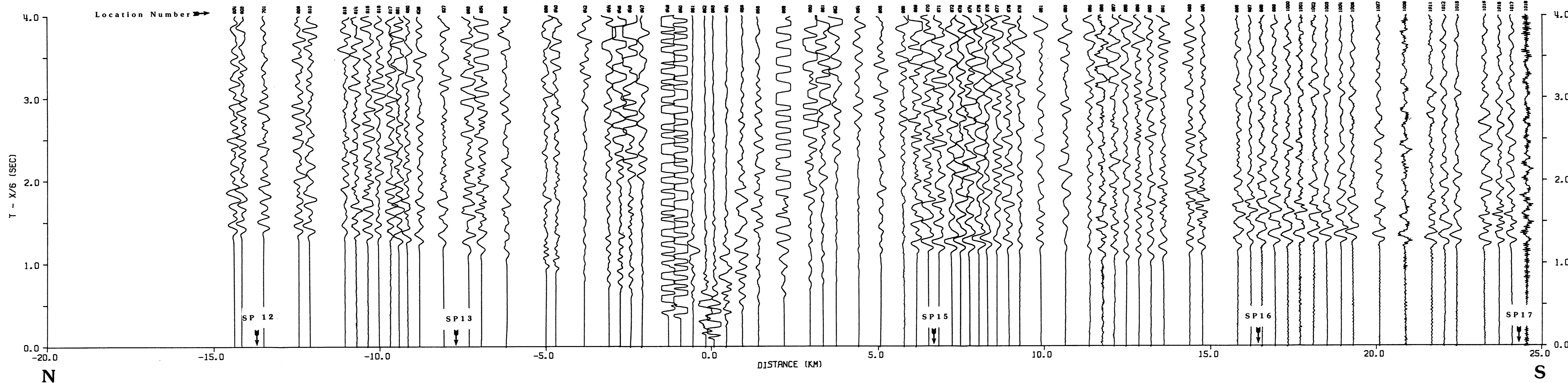
This report is preliminary and has not been reviewed for conformity with U.S. Geological Survey editorial standards and stratigraphic nomenclature.



RECORD SECTION - YUCCA MTN. REGION
NORTH-SOUTH PROFILE - SHOTPOINT 13

by
Vickie D. Sutton
1984

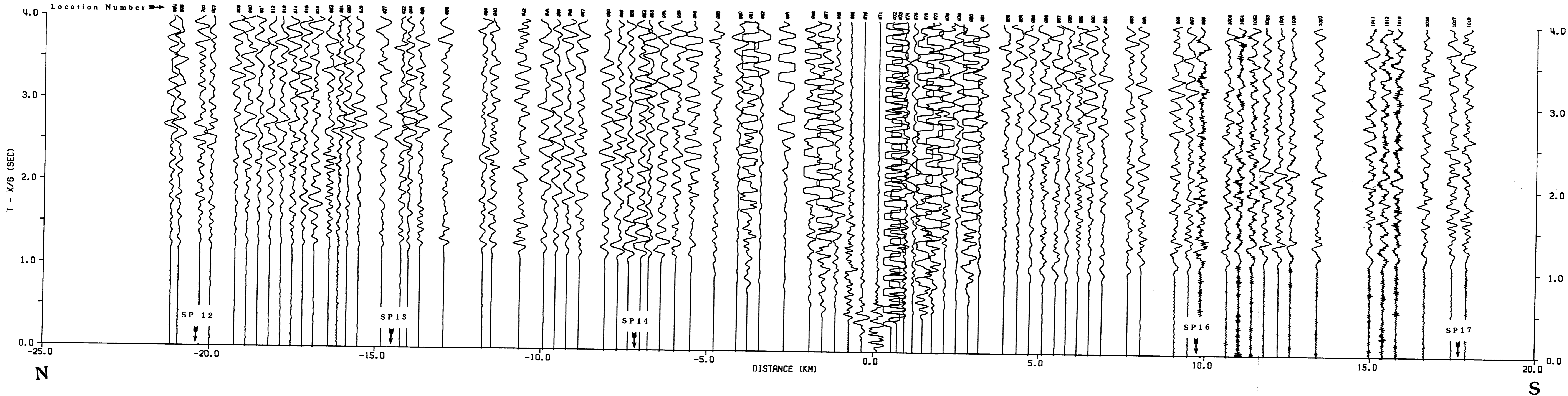
This report is preliminary and has not been reviewed for conformity with U.S. Geological Survey editorial standards and stratigraphic nomenclature.



**RECORD SECTION - YUCCA MTN. REGION
NORTH-SOUTH PROFILE - SHOTPOINT 14**

by
Vickie D. Sutton
1984

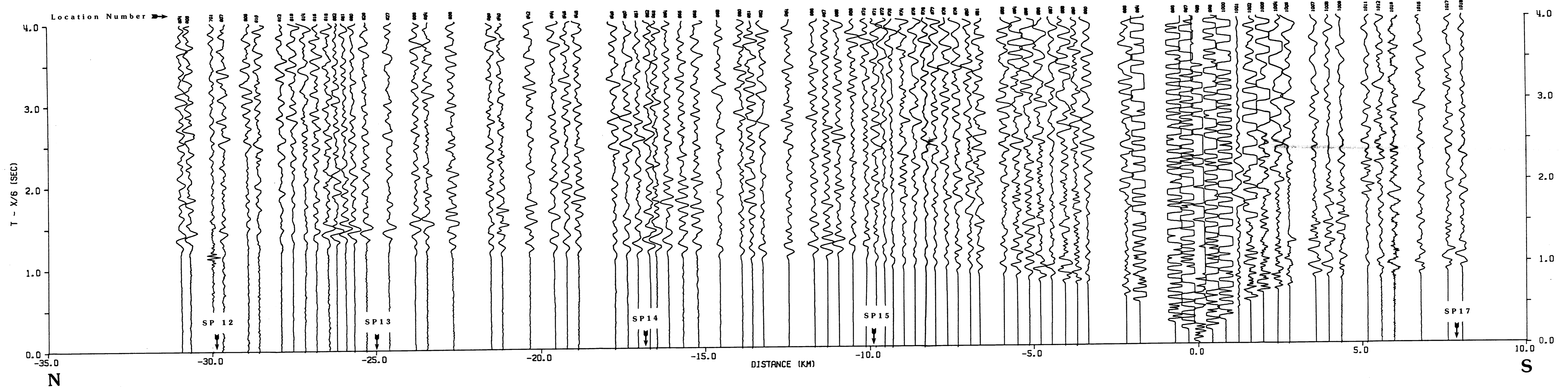
This report is preliminary and has not been reviewed for conformity with U.S. Geological Survey editorial standards and stratigraphic nomenclature.



**RECORD SECTION - YUCCA MTN. REGION
NORTH-SOUTH PROFILE - SHOTPOINT 15**

by
Vickie D. Sutton
1984

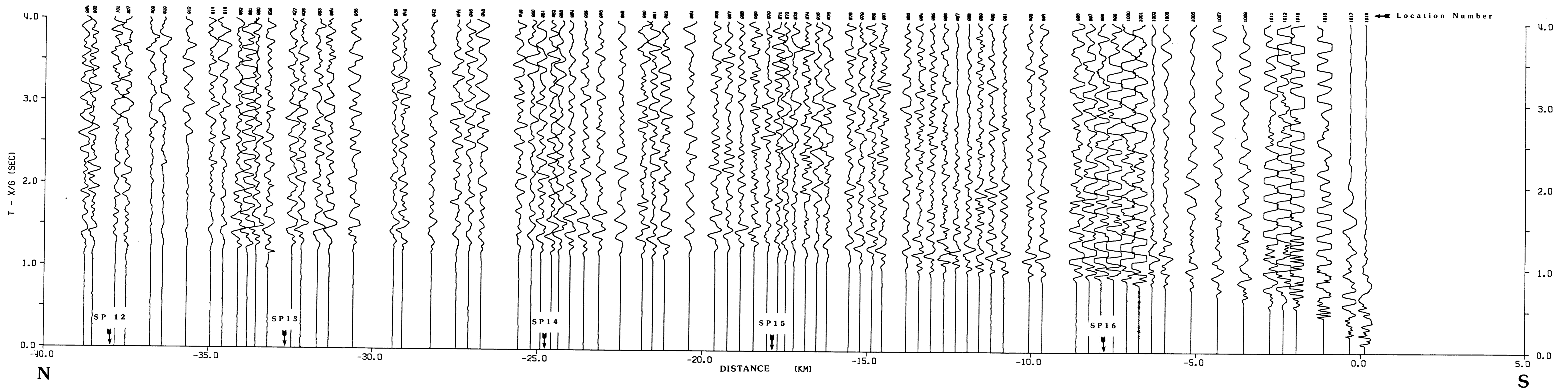
This report is preliminary and has not been reviewed for conformity with U.S. Geological Survey editorial standards and stratigraphic nomenclature.



**RECORD SECTION - YUCCA MTN. REGION
 NORTH-SOUTH PROFILE - SHOTPOINT 16**

by
Vickie D. Sutton
 1984

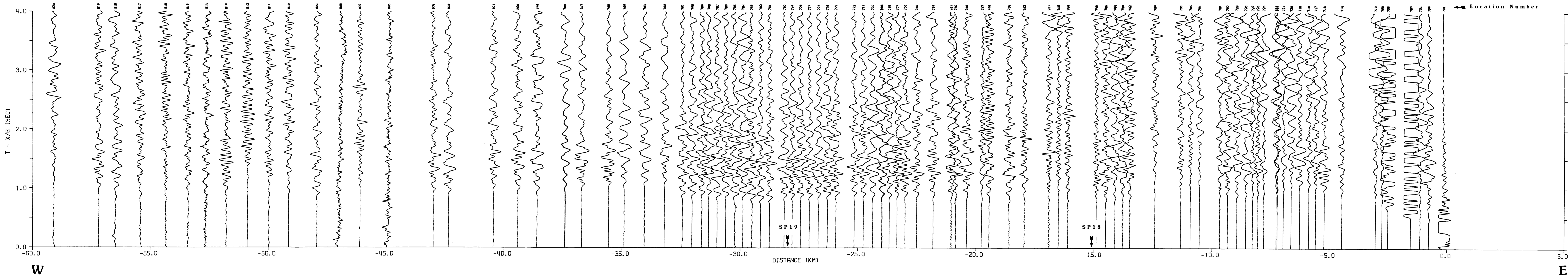
This report is preliminary and has not been reviewed for conformity with U.S. Geological Survey editorial standards and stratigraphic nomenclature.



**RECORD SECTION - YUCCA MTN. REGION
 NORTH-SOUTH PROFILE - SHOTPOINT 17**

by
Vickie D. Sutton
 1984

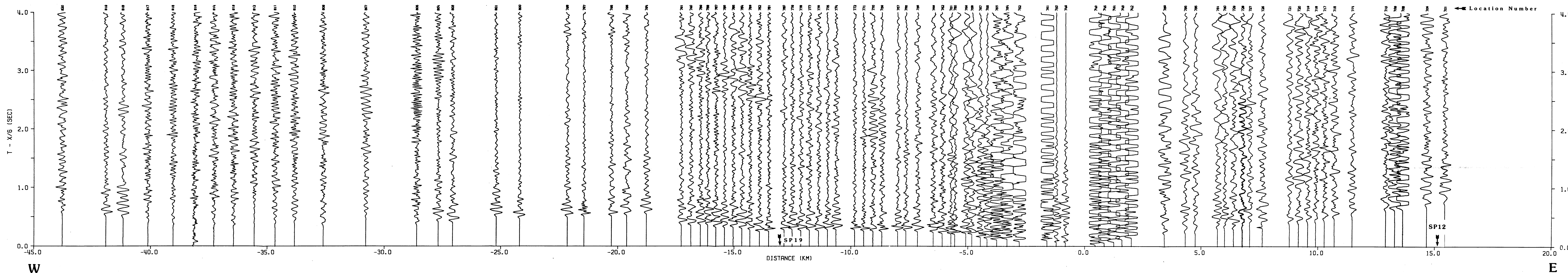
This report is preliminary and has not been reviewed for conformity with U.S. Geological Survey editorial standards and stratigraphic nomenclature.



**RECORD SECTION - BEATTY, NEV. REGION
EAST-WEST PROFILE - SHOTPOINT 12**

by
Vickie D. Sutton
1984

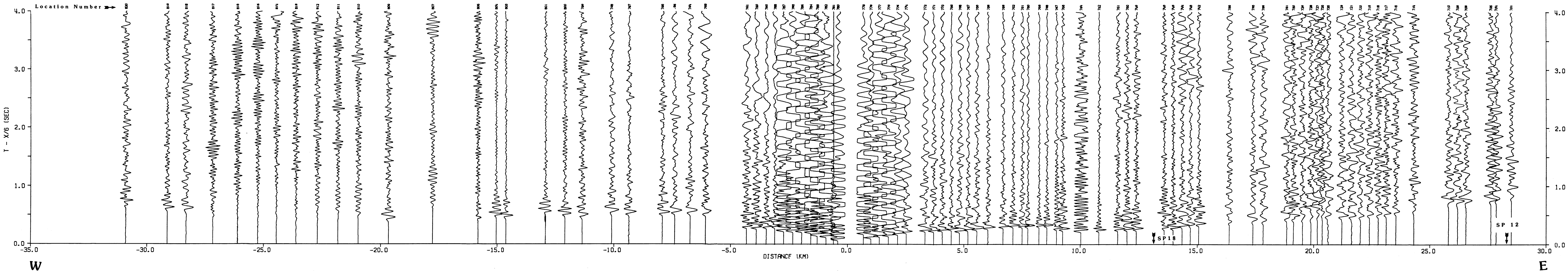
This report is preliminary and has not been reviewed for conformity with U.S. Geological Survey editorial standards.



**RECORD SECTION - BEATTY, NEV. REGION
EAST-WEST PROFILE- SHOTPOINT 18**

by
Vickie D. Sutton
1984

This report is preliminary and has not been reviewed for conformity with U.S. Geological Survey editorial standards.



**RECORD SECTION - BEATTY, NEV. REGION
EAST-WEST PROFILE - SHOTPOINT 19**

by
Vickie D. Sutton
1984

This report is preliminary and has not been reviewed for conformity with U.S. Geological Survey editorial standards.