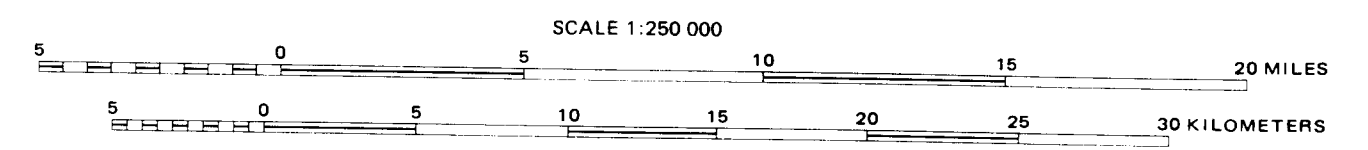
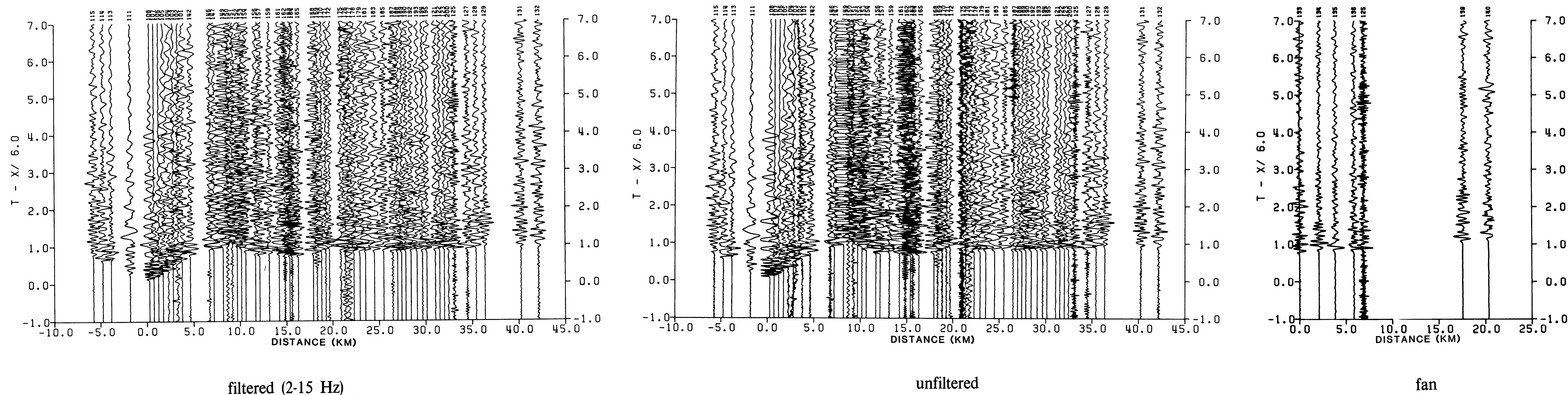


# MAP OF MONO CRATERS-LONG VALLEY REGION WITH SHOTPOINTS AND NUMBERED RECORDER SITE LOCATIONS

by  
Patricia J. Meador and David P. Hill  
1983



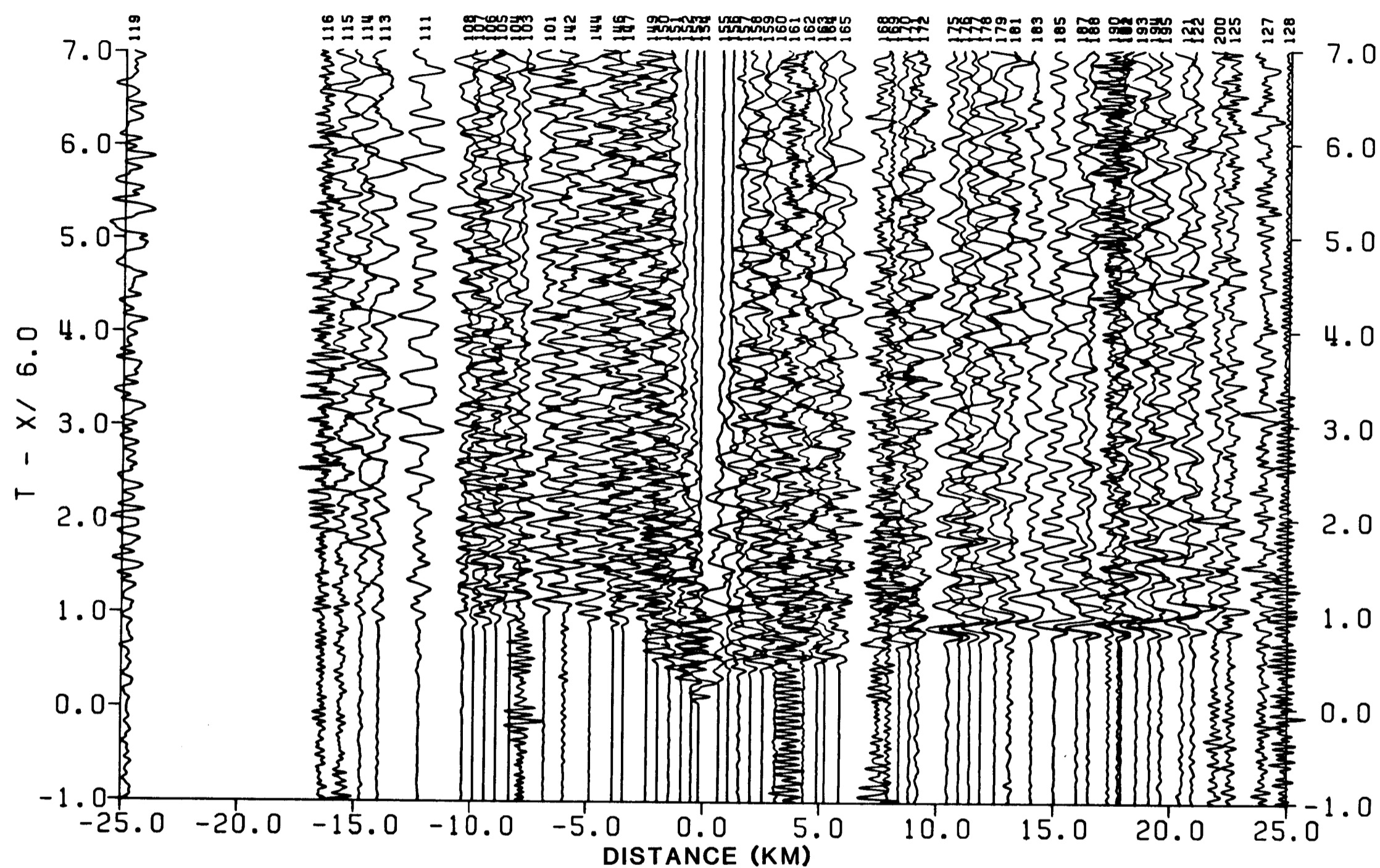
This map is preliminary and has not been reviewed for conformity with U.S. Geological Survey editorial standards and stratigraphic nomenclature. Any use of trade names is for descriptive purposes only and does not imply endorsement by the USGS.



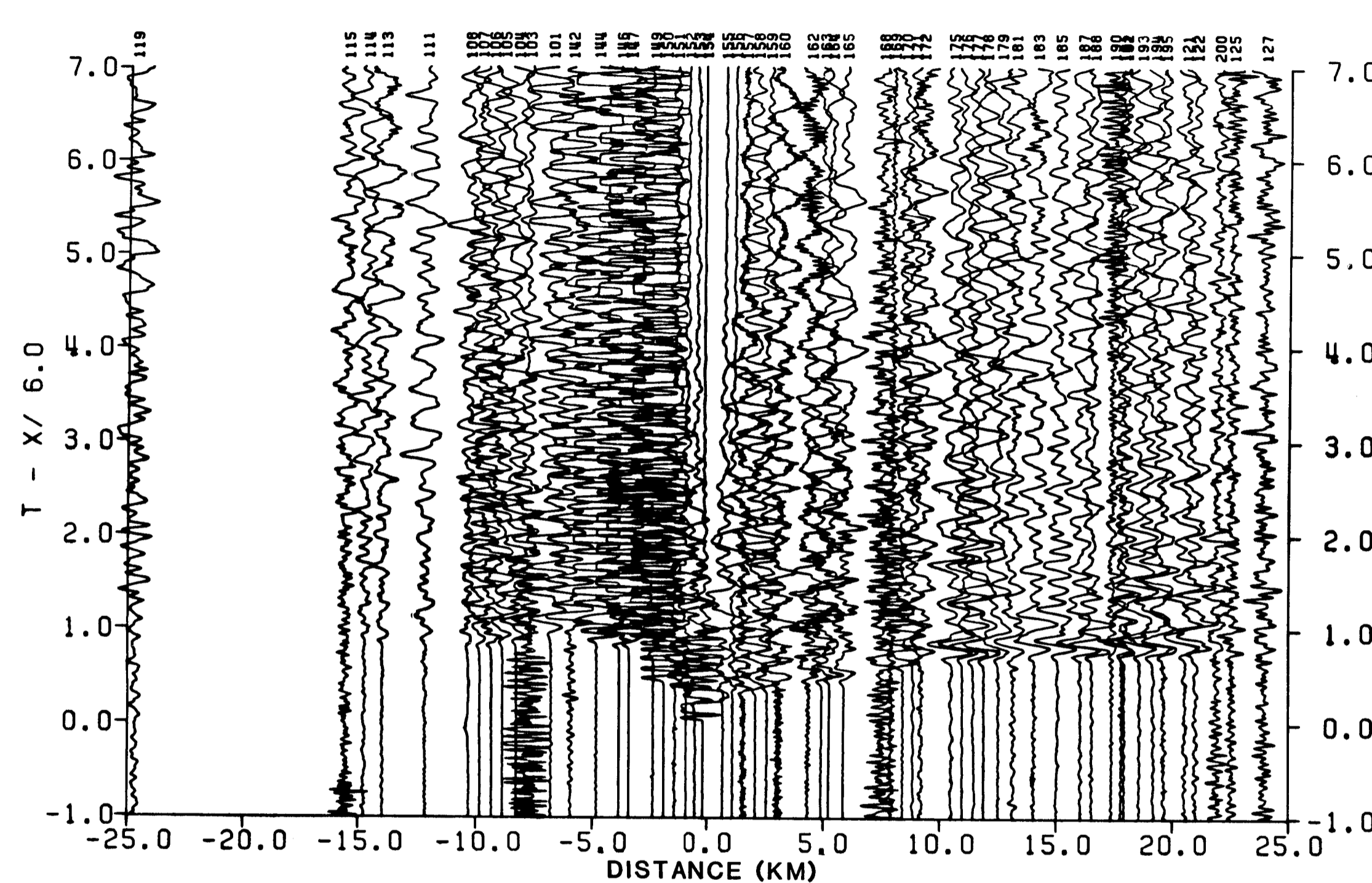
RECORD SECTIONS FROM THE LONG VALLEY REGION  
 NORTH-SOUTH PROFILE — SHOT 1, SHOTPOINT 1

by  
 Patricia J. Meador and David P. Hill  
 1983

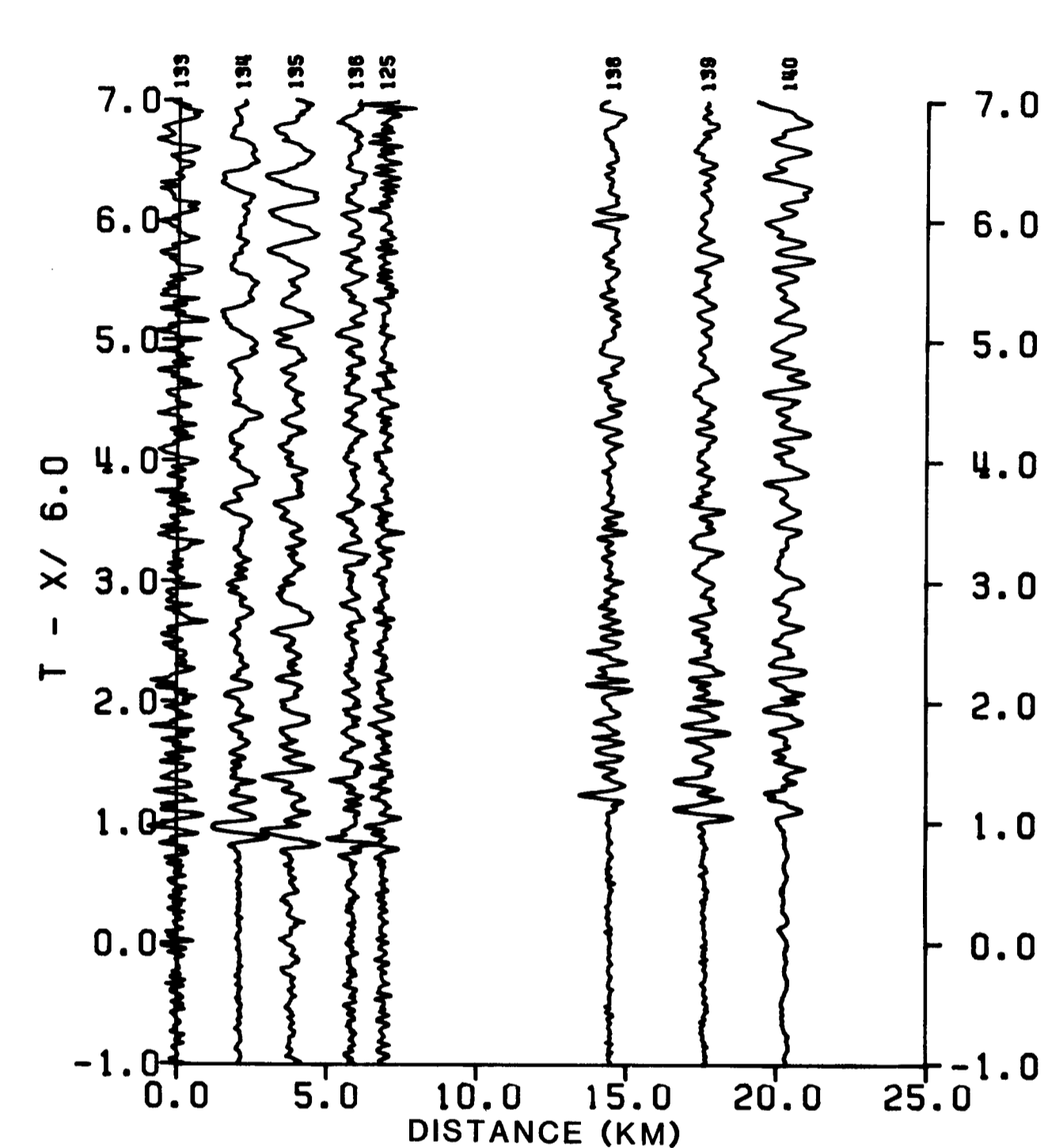
This report is preliminary and has not been reviewed for conformity with U.S. Geological Survey editorial standards and stratigraphic nomenclature. Any use of trade names is for descriptive purposes only and does not imply endorsement by the USGS.



filtered (2-15 Hz)



unfiltered



fan

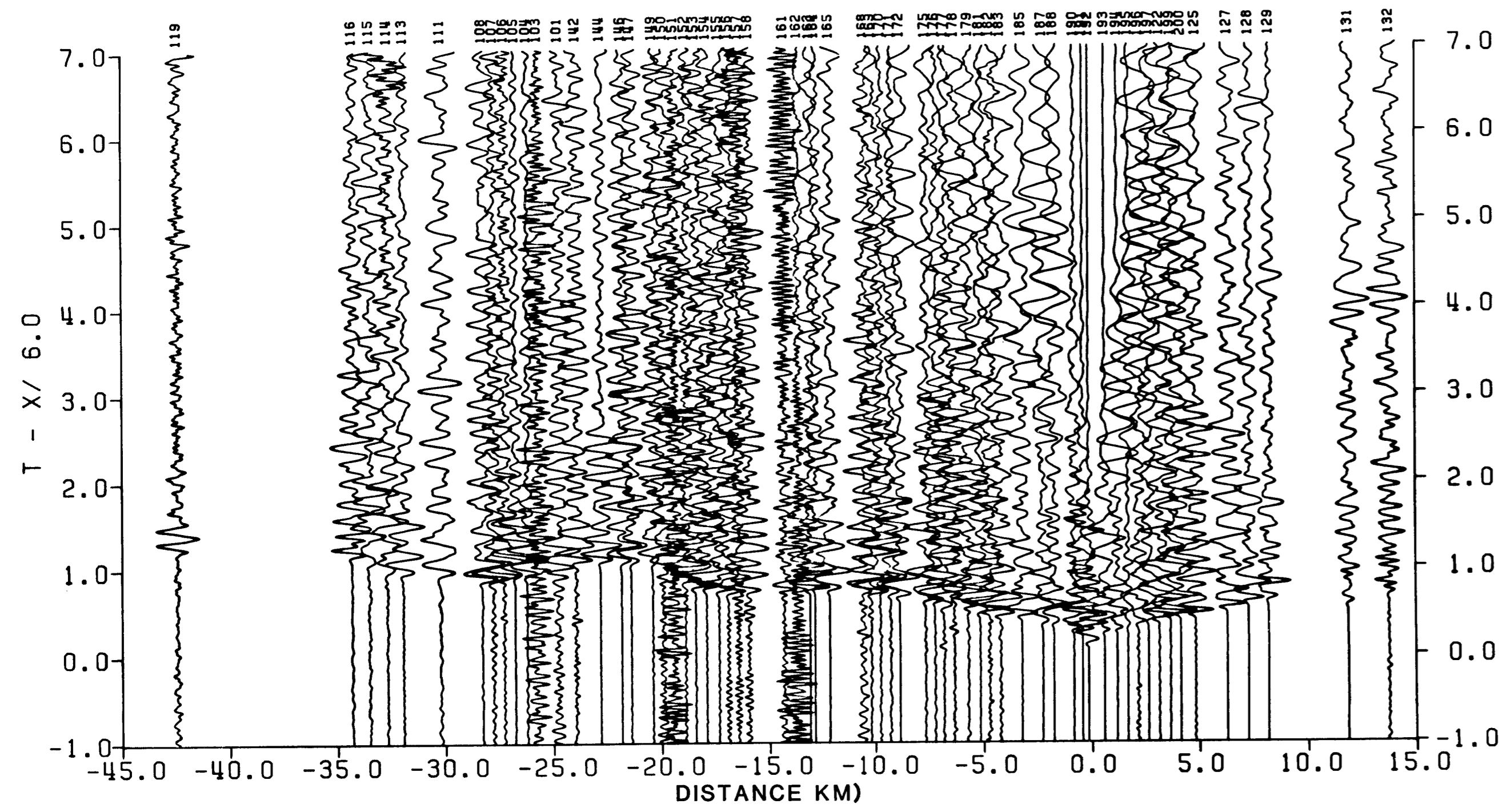
RECORD SECTIONS FROM THE LONG VALLEY REGION  
NORTH-SOUTH PROFILE — SHOT 2, SHOTPOINT 3

by

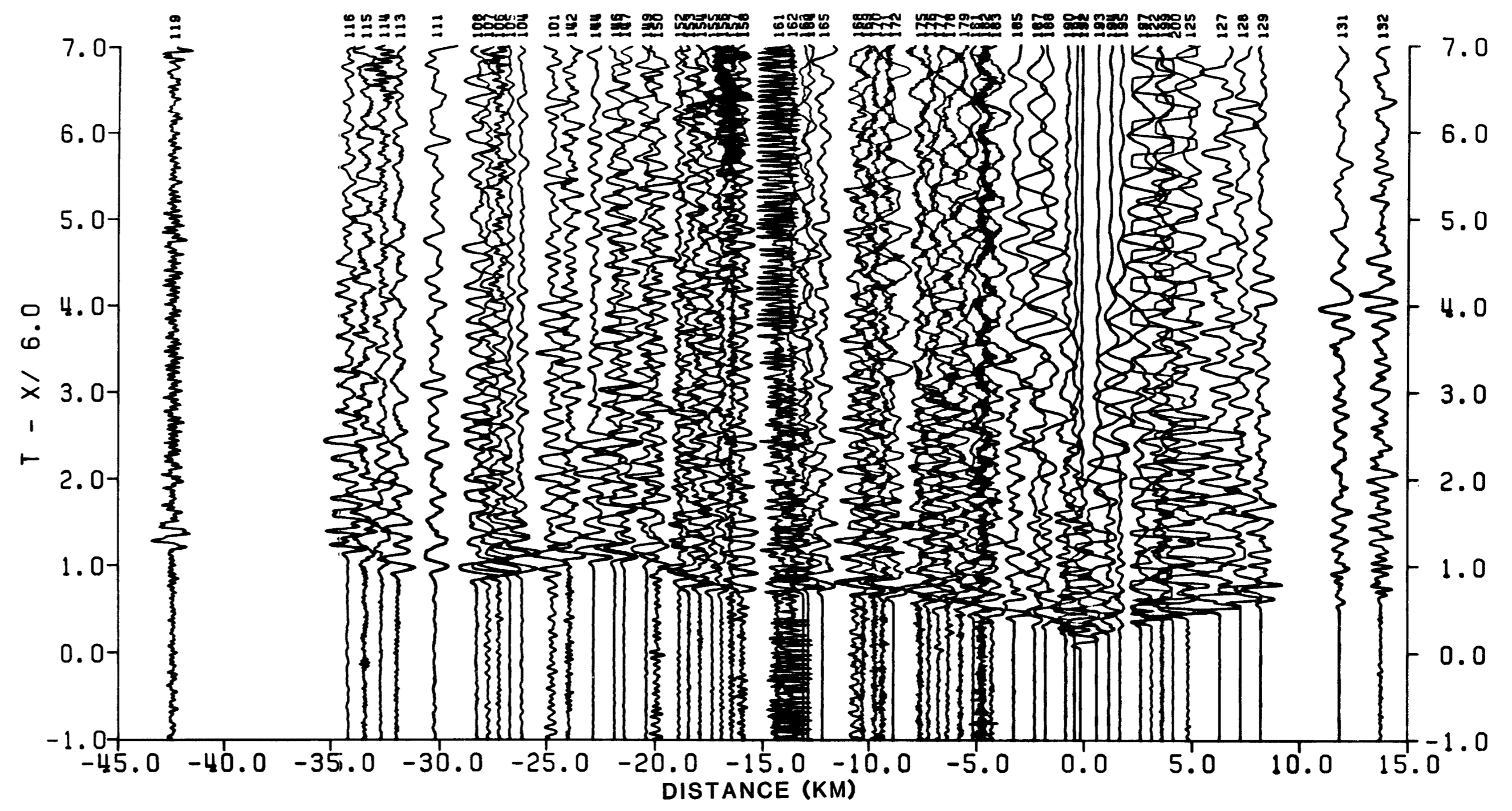
Patricia J. Meador and David P. Hill

1983

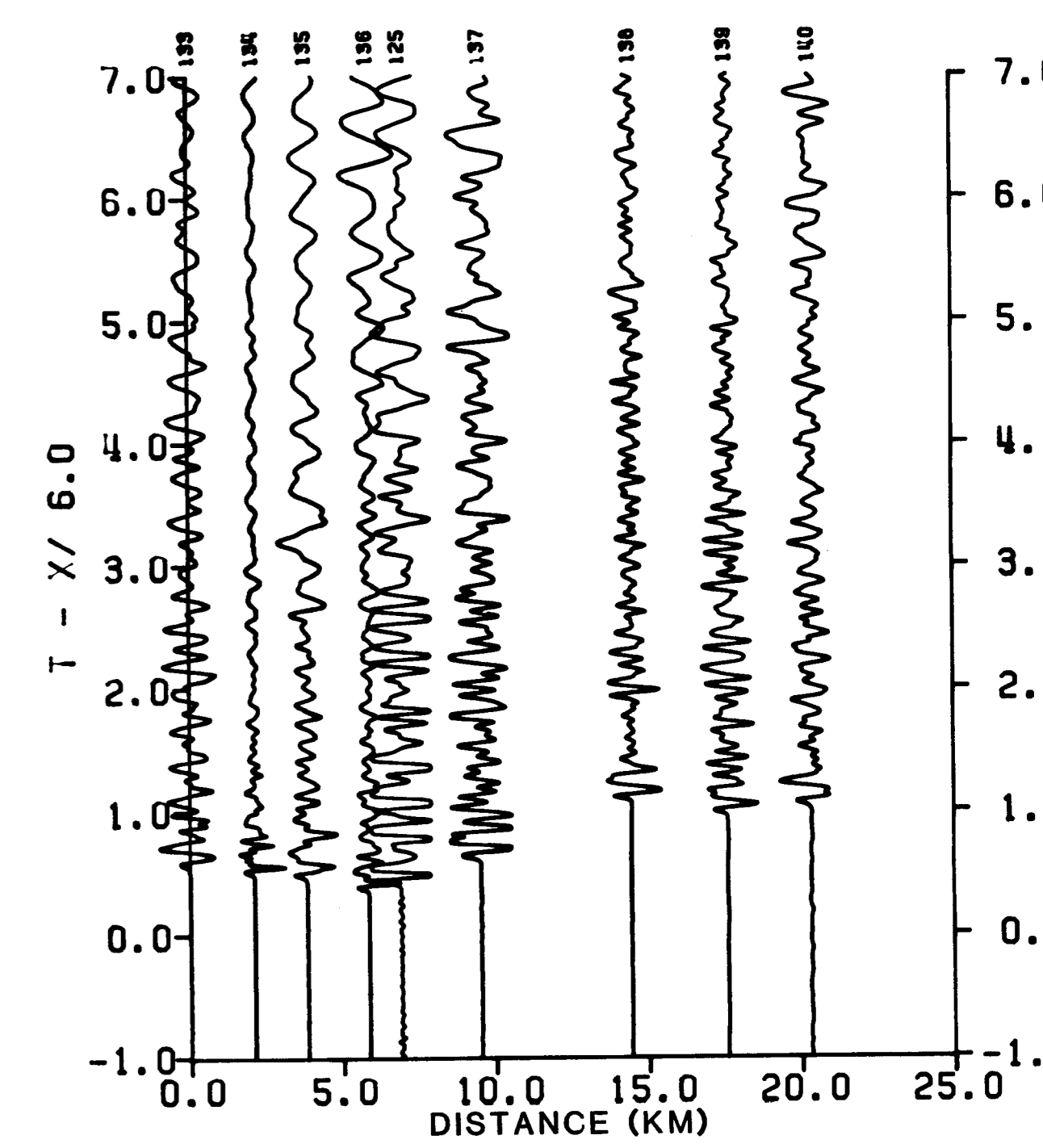
This report is preliminary and has not been reviewed for conformity with U.S. Geological Survey editorial standards and stratigraphic nomenclature. Any use of trade names is for descriptive purposes only and does not imply endorsement by the USGS.



filtered (2-15 Hz)



unfiltered



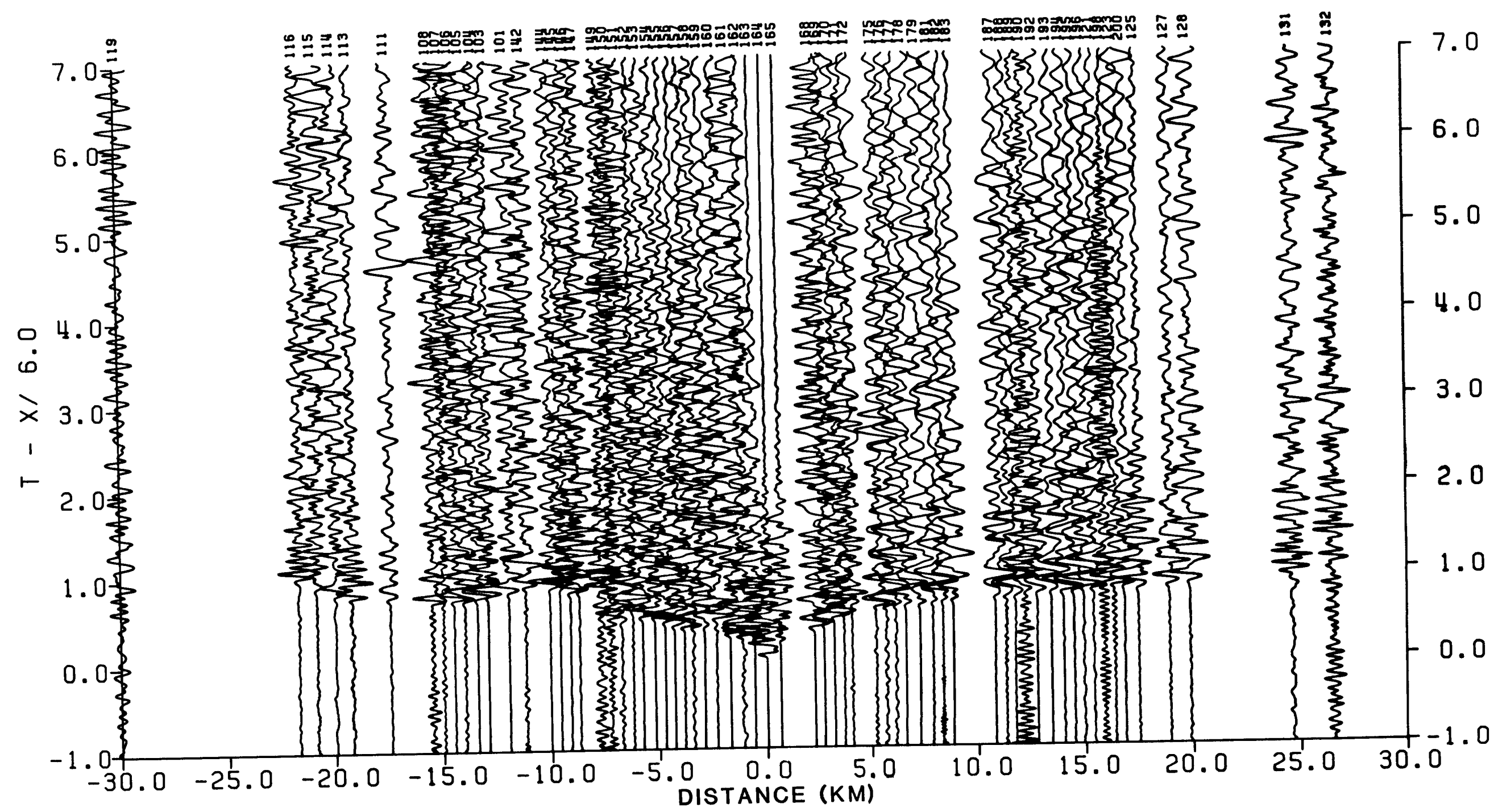
fan

RECORD SECTIONS FROM THE LONG VALLEY REGION  
 NORTH-SOUTH PROFILE — SHOT 3, SHOTPOINT 5

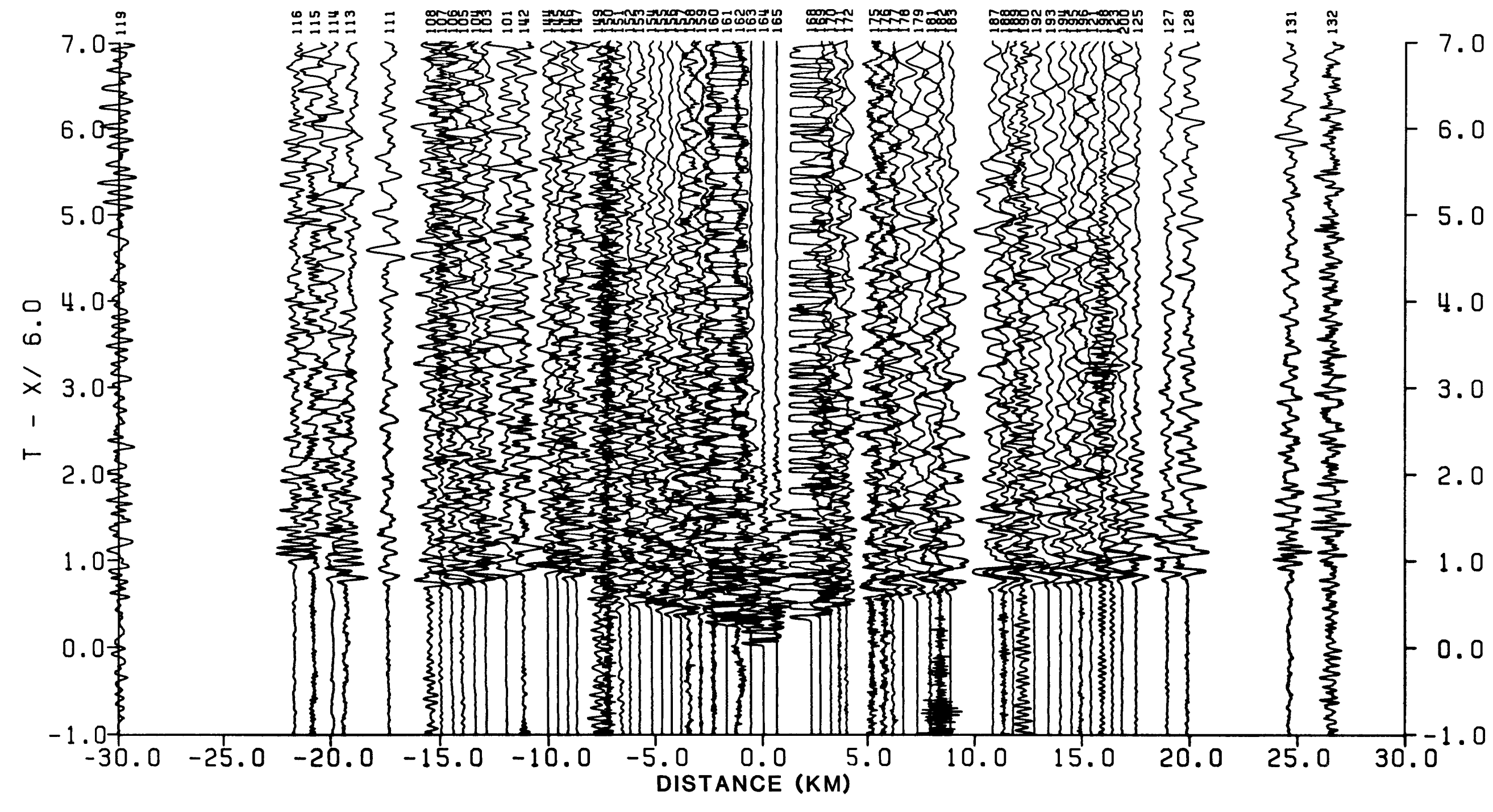
by  
 Patricia J. Meador and David P. Hill  
 1983

This report is preliminary and has not been reviewed for conformity with U.S. Geological Survey editorial standards and stratigraphic nomenclature. Any use of trade names is for descriptive purposes only and does not imply endorsement by the USGS.

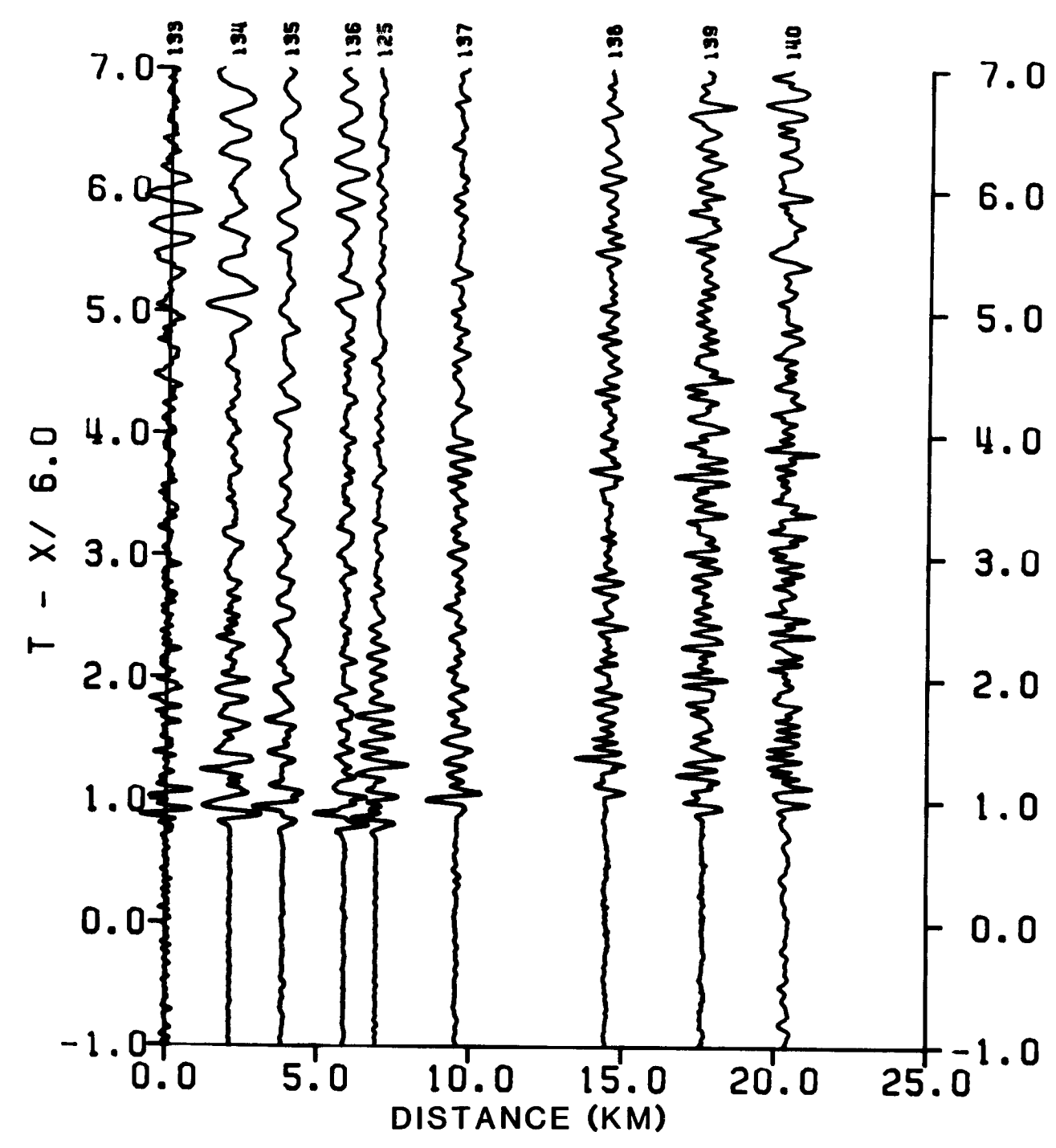




filtered (2-15 Hz)



unfiltered



fan

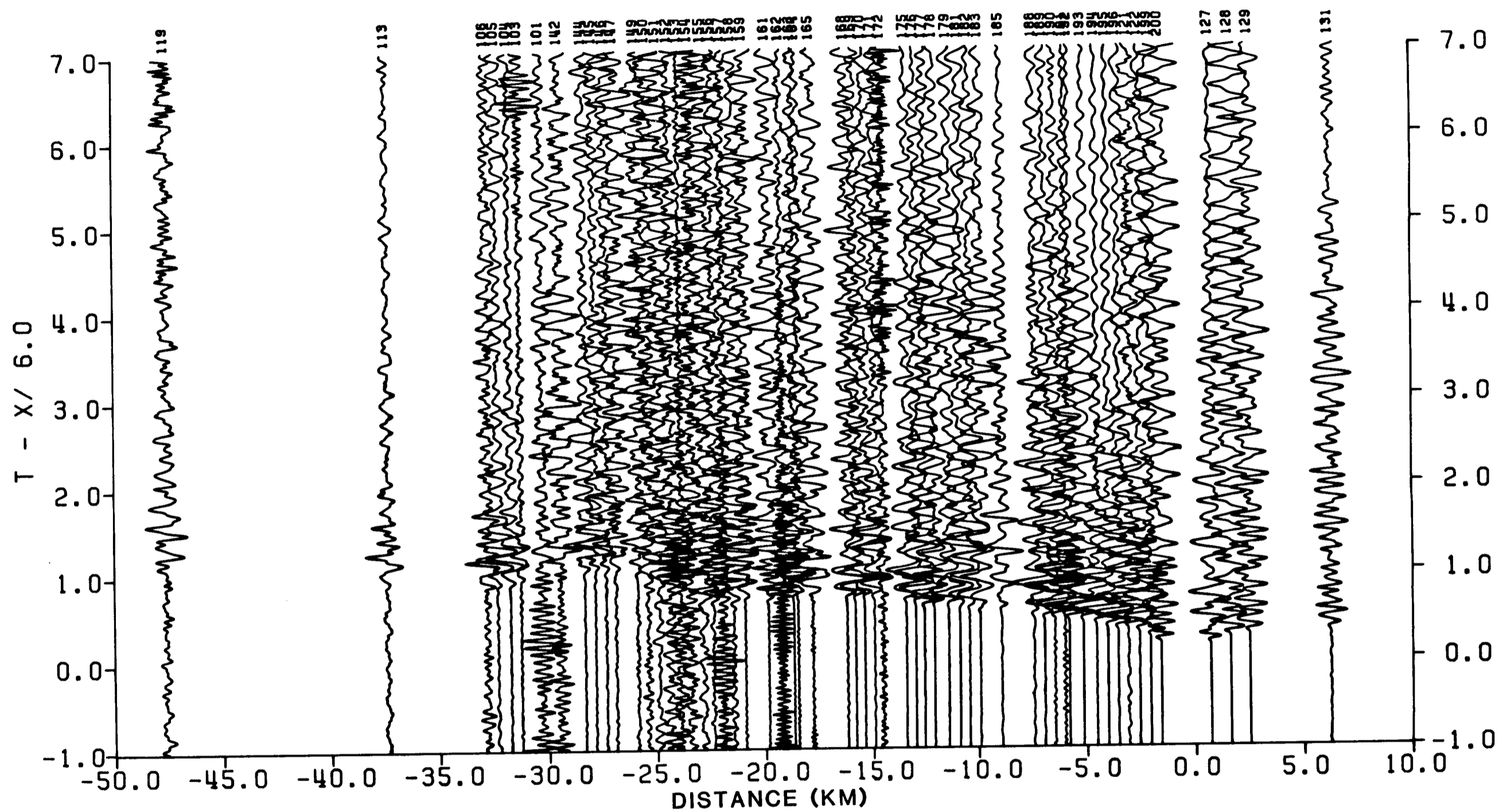
RECORD SECTIONS FROM THE LONG VALLEY REGION  
 NORTH-SOUTH PROFILE — SHOT 5, SHOTPOINT 4

by

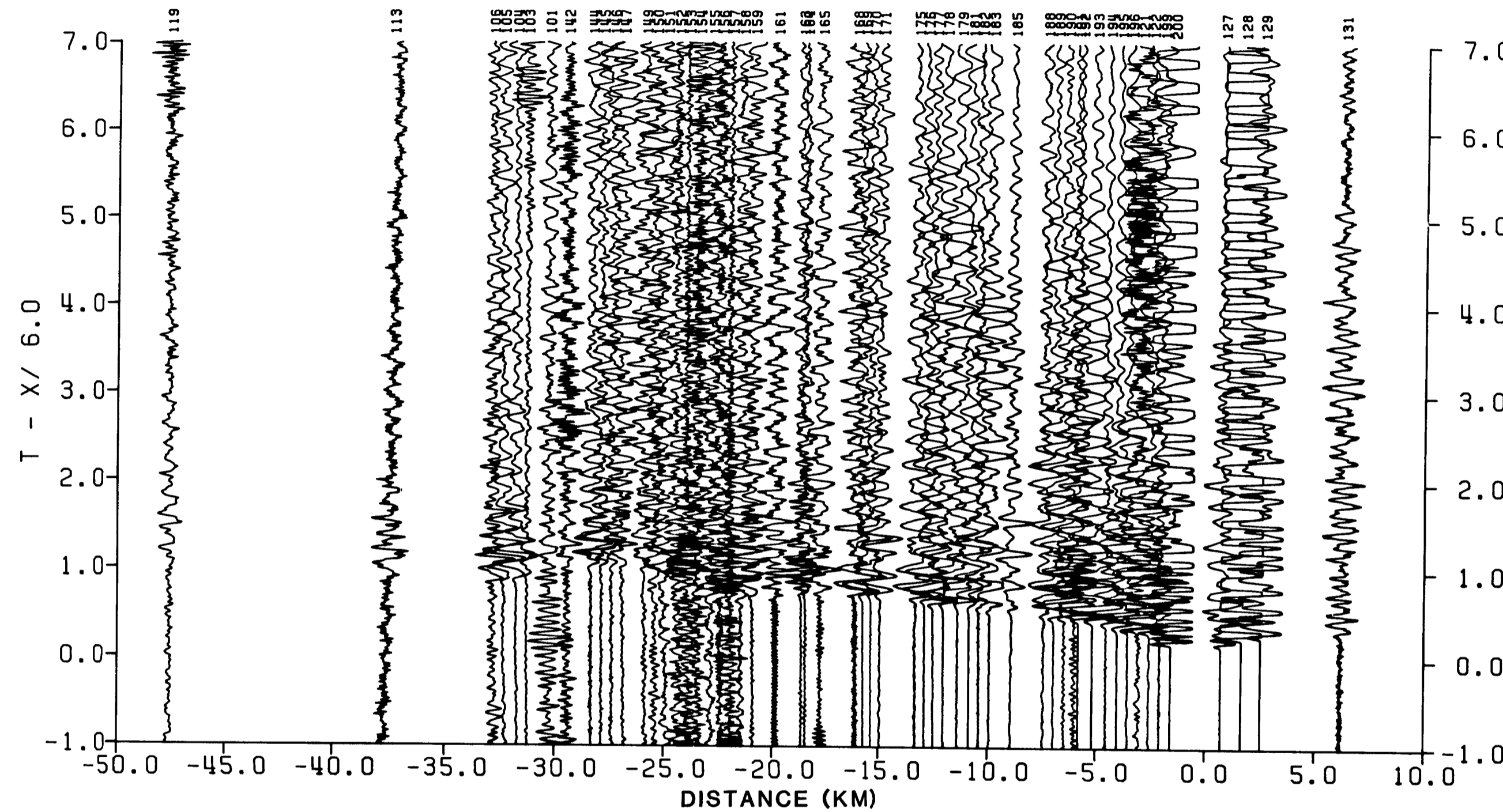
Patricia J. Meador and David P. Hill

1983

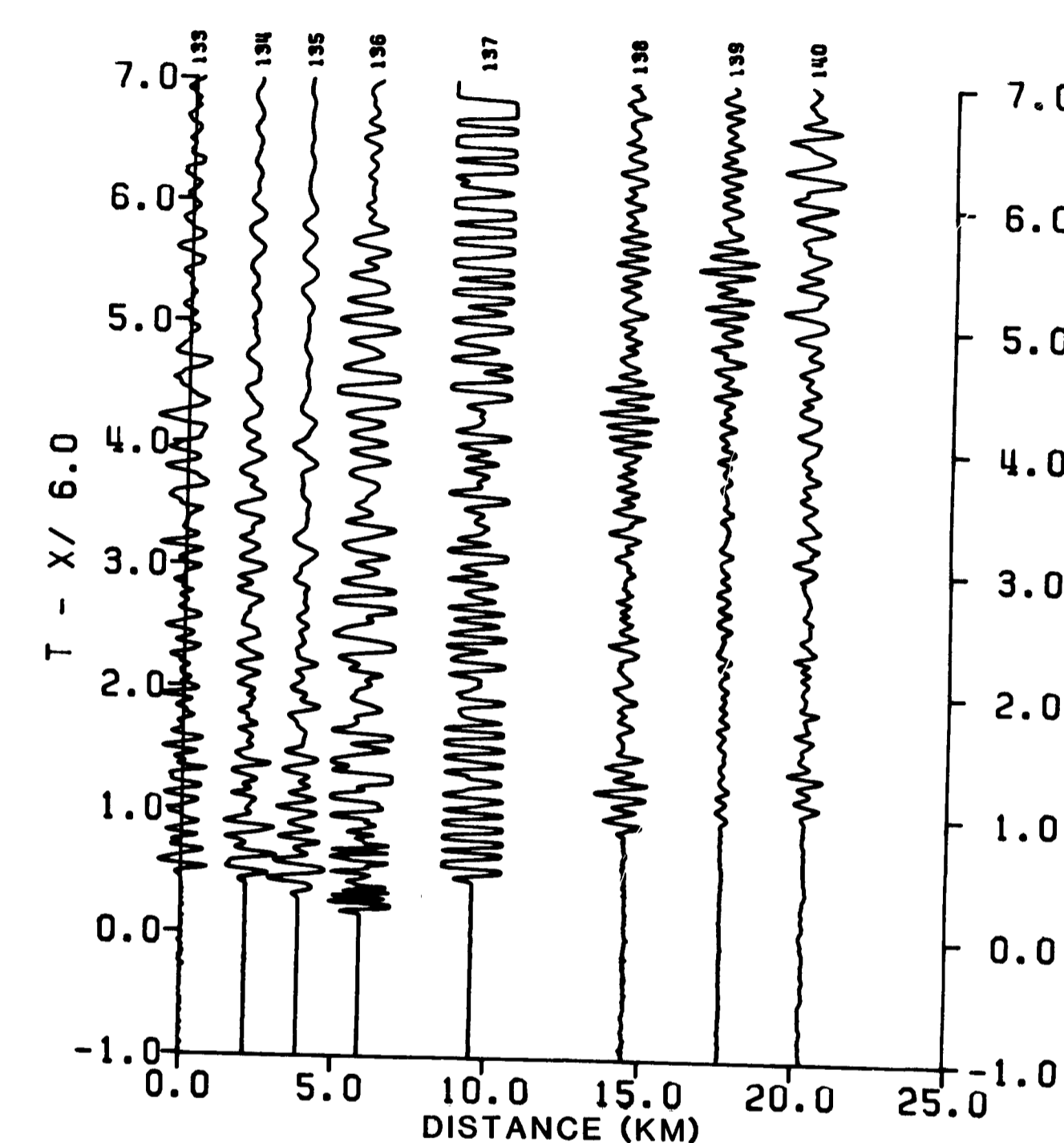
This report is preliminary and has not been reviewed for conformity with U.S. Geological Survey editorial standards and stratigraphic nomenclature. Any use of trade names is for descriptive purposes only and does not imply endorsement by the USGS.



filtered (2-15 Hz)



unfiltered



fan

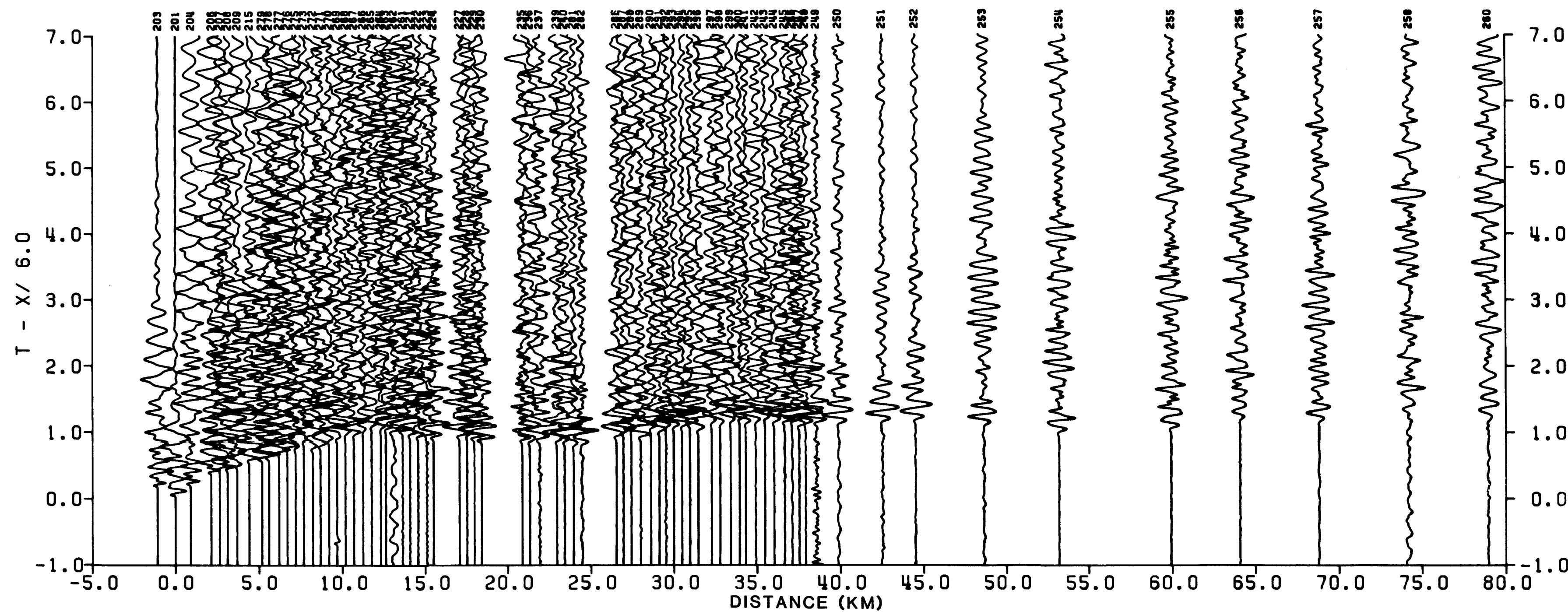
RECORD SECTIONS FROM THE LONG VALLEY REGION  
 NORTH-SOUTH PROFILE — SHOT 6, SHOTPOINT 6

by

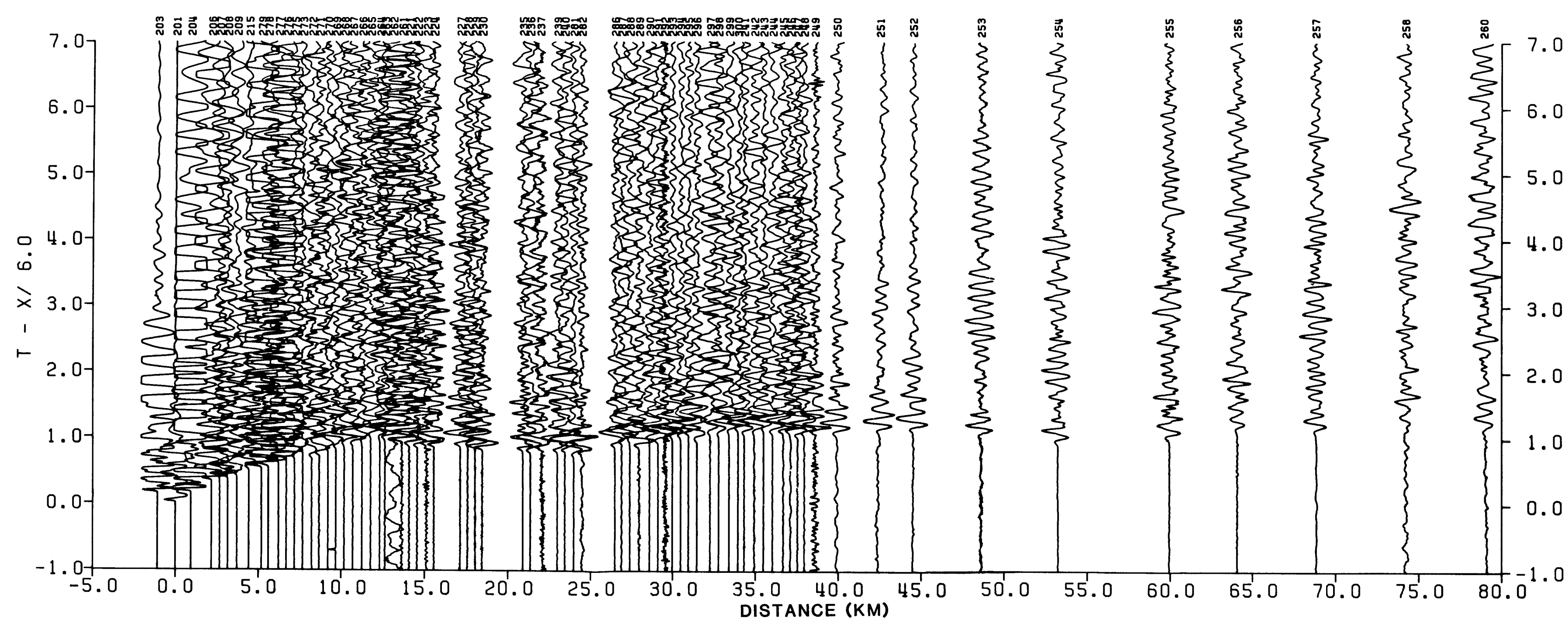
Particia J. Meador and David P. Hill

1983

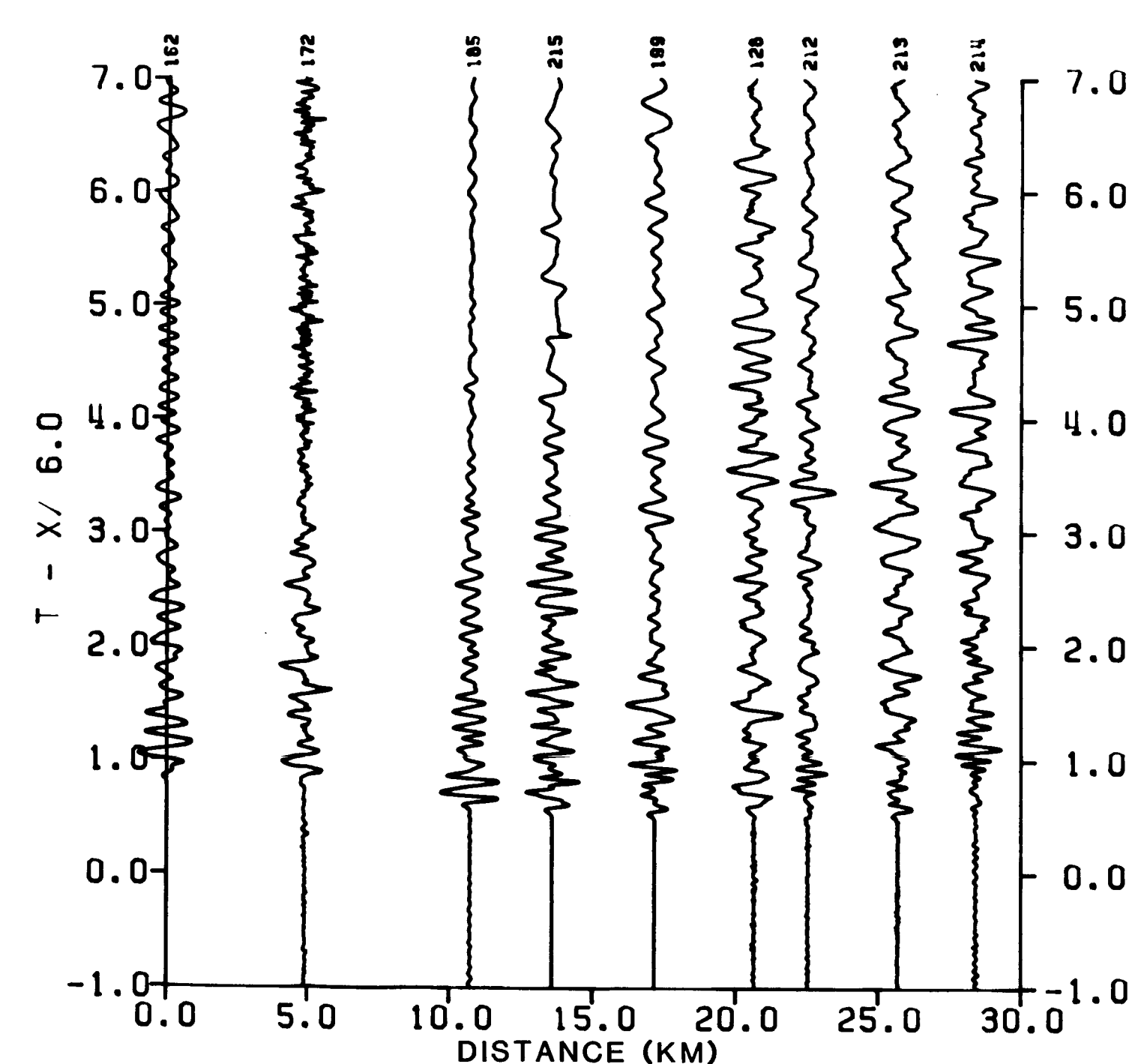
This report is preliminary and has not been reviewed for conformity with U.S. Geological Survey editorial standards and stratigraphic nomenclature. Any use of trade names is for descriptive purposes only and does not imply endorsement by the USGS.



filtered (2-15 Hz )



unfiltered



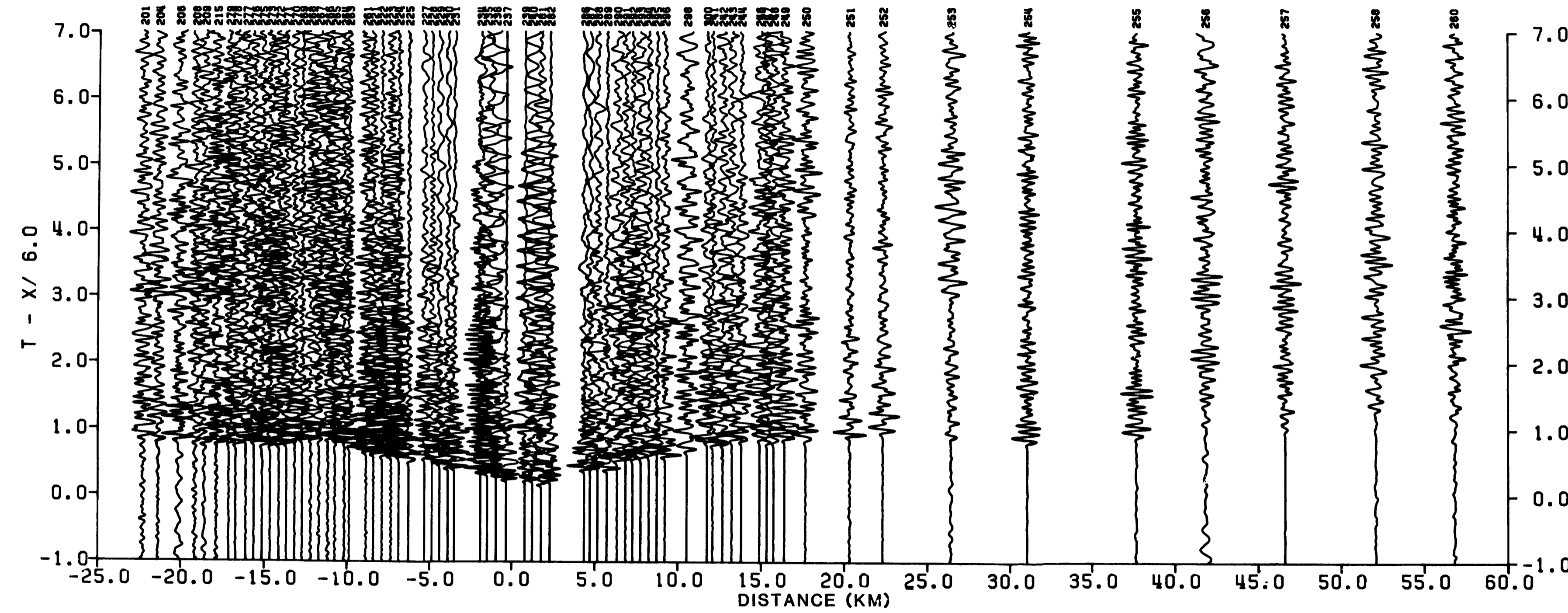
fan

### RECORD SECTIONS FROM THE LONG VALLEY REGION EAST-WEST PROFILE — SHOT 7, SHOTPOINT 7

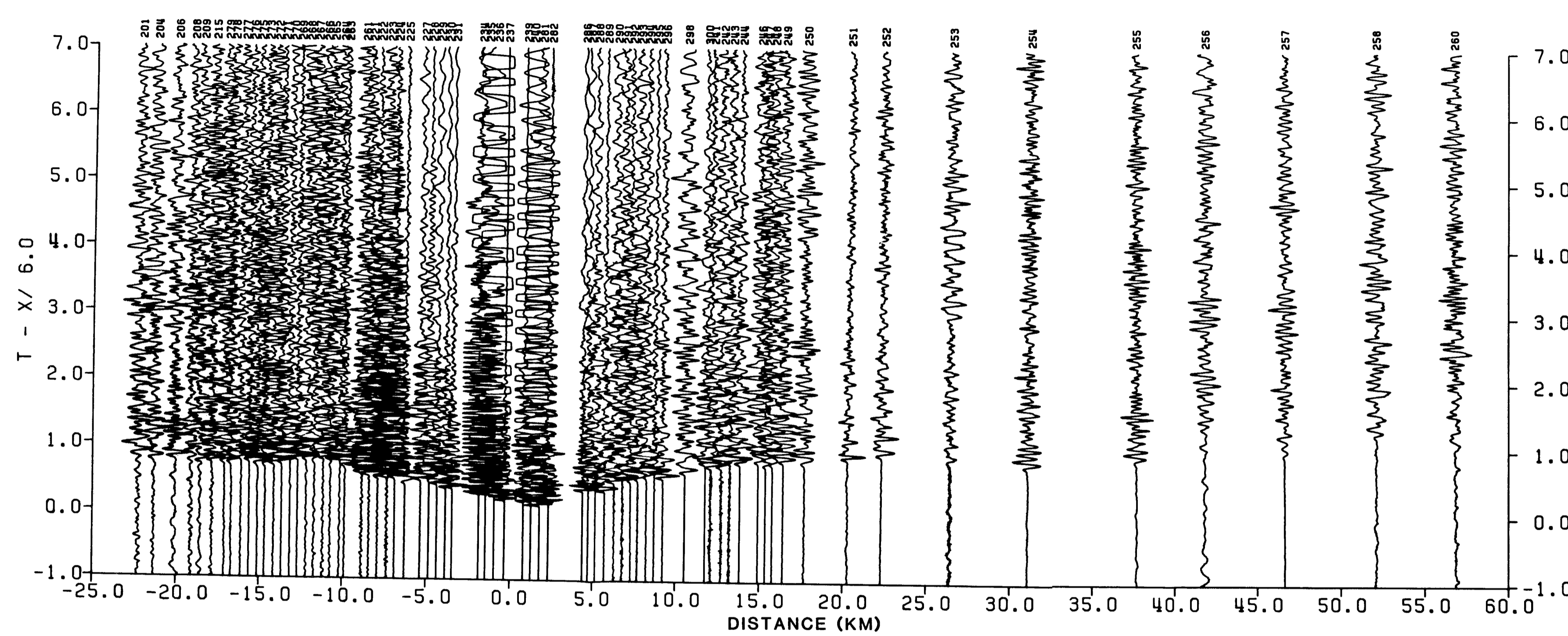
by  
Patricia J. Meador and David P. Hill  
1983

This report is preliminary and has not been reviewed for conformity with U.S. Geological Survey editorial standards and stratigraphic nomenclature. Any use of trade names is for descriptive purposes only and does not imply endorsement by the USGS.

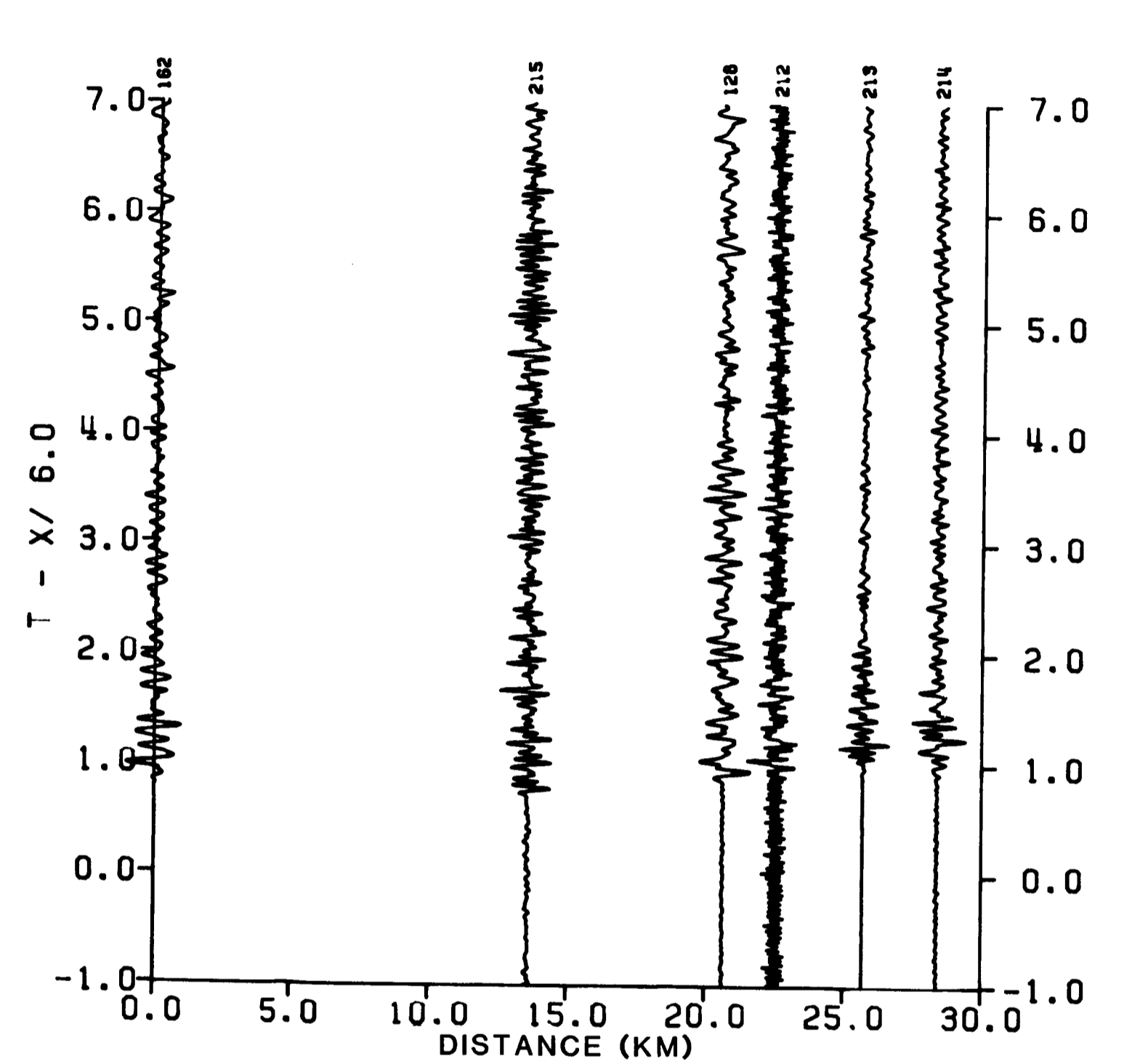




filtered (2-15 Hz)



unfiltered



fan

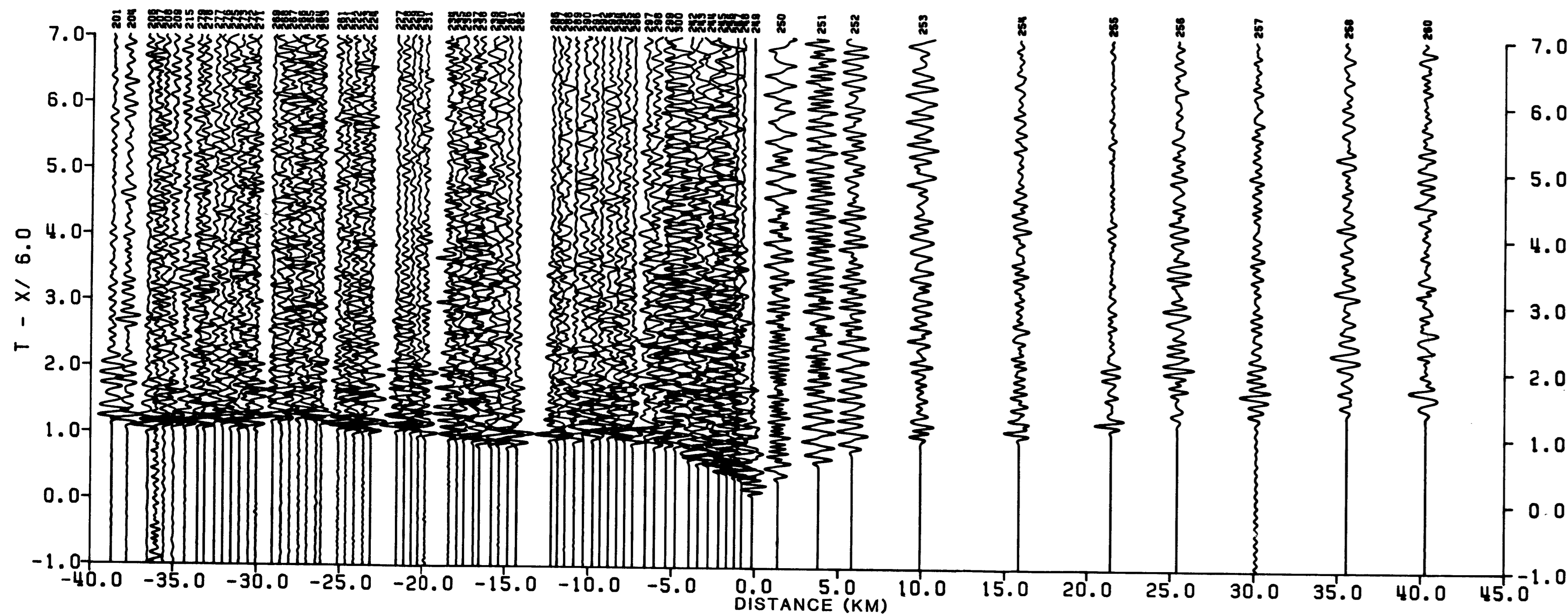
RECORD SECTIONS FROM THE LONG VALLEY REGION  
EAST-WEST PROFILE — SHOT 8, SHOTPOINT 9

by

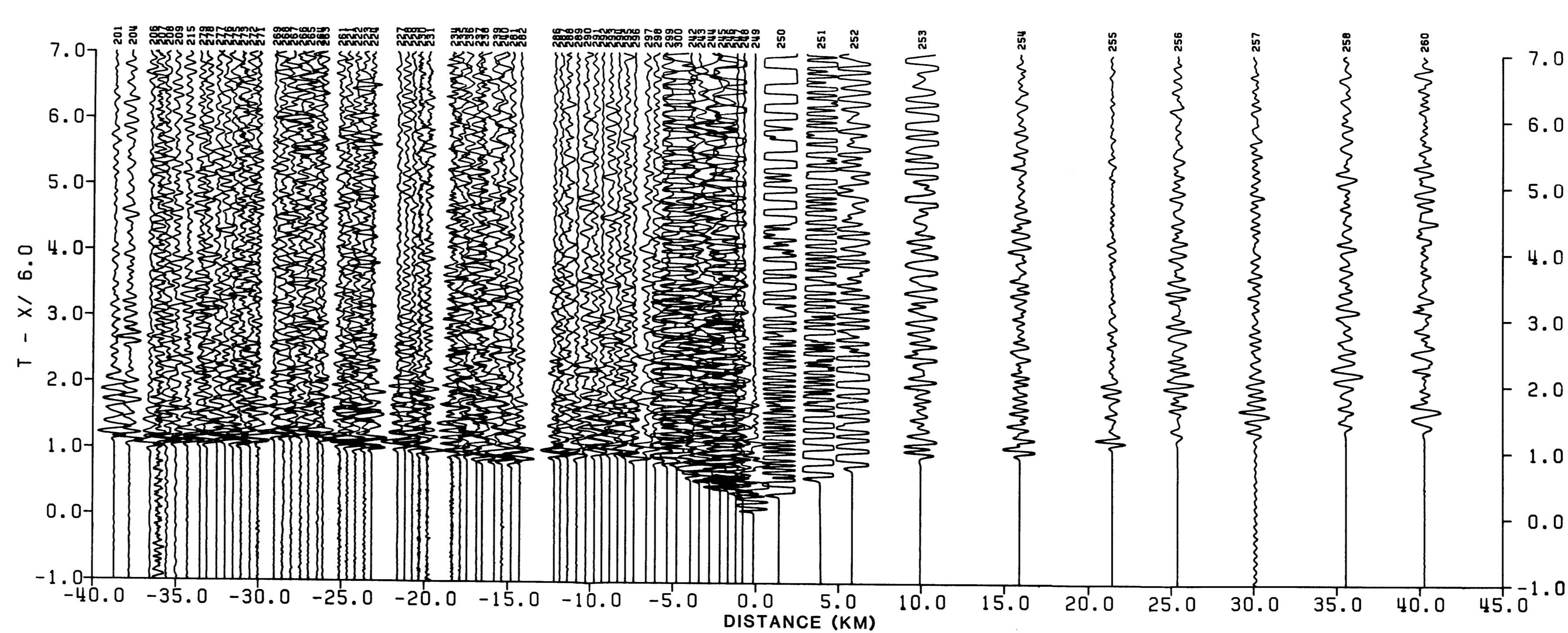
Patricia J. Meador and David P. Hill

1983

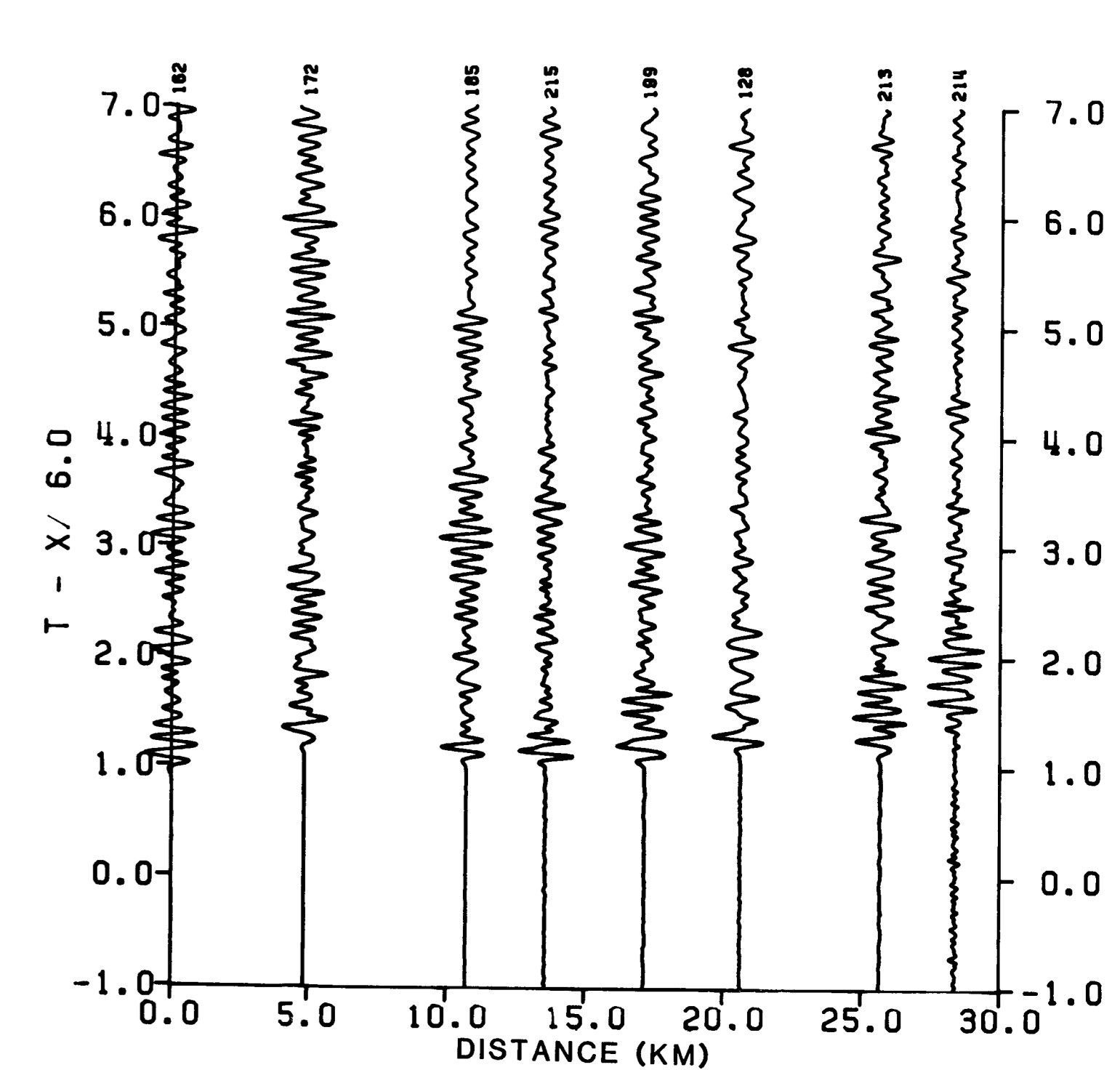
This report is preliminary and has not been reviewed for conformity with U.S. Geological Survey editorial standards and stratigraphic nomenclature. Any use of trade names is for descriptive purposes only and does not imply endorsement by the USGS.



filtered (2-15 Hz)



unfiltered



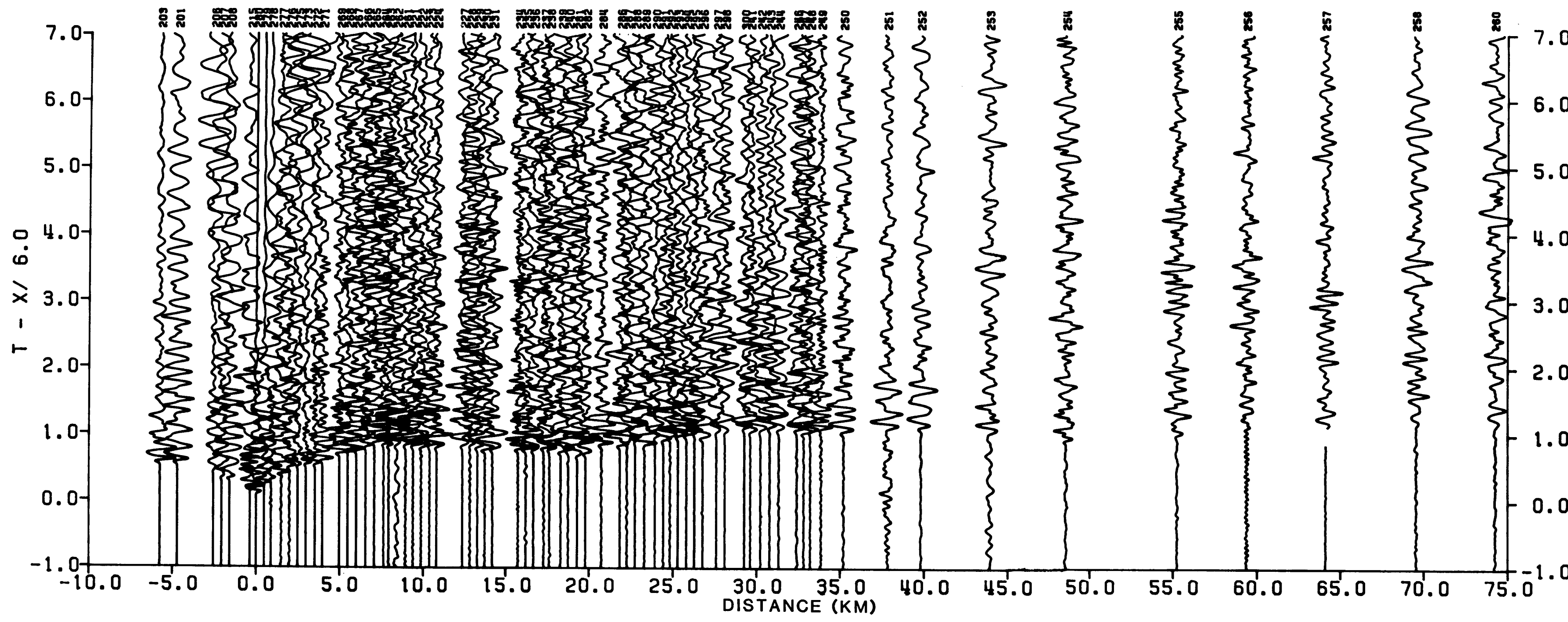
fan

RECORD SECTIONS FROM THE LONG VALLEY REGION  
 EAST-WEST PROFILE — SHOT 9, SHOTPOINT 10

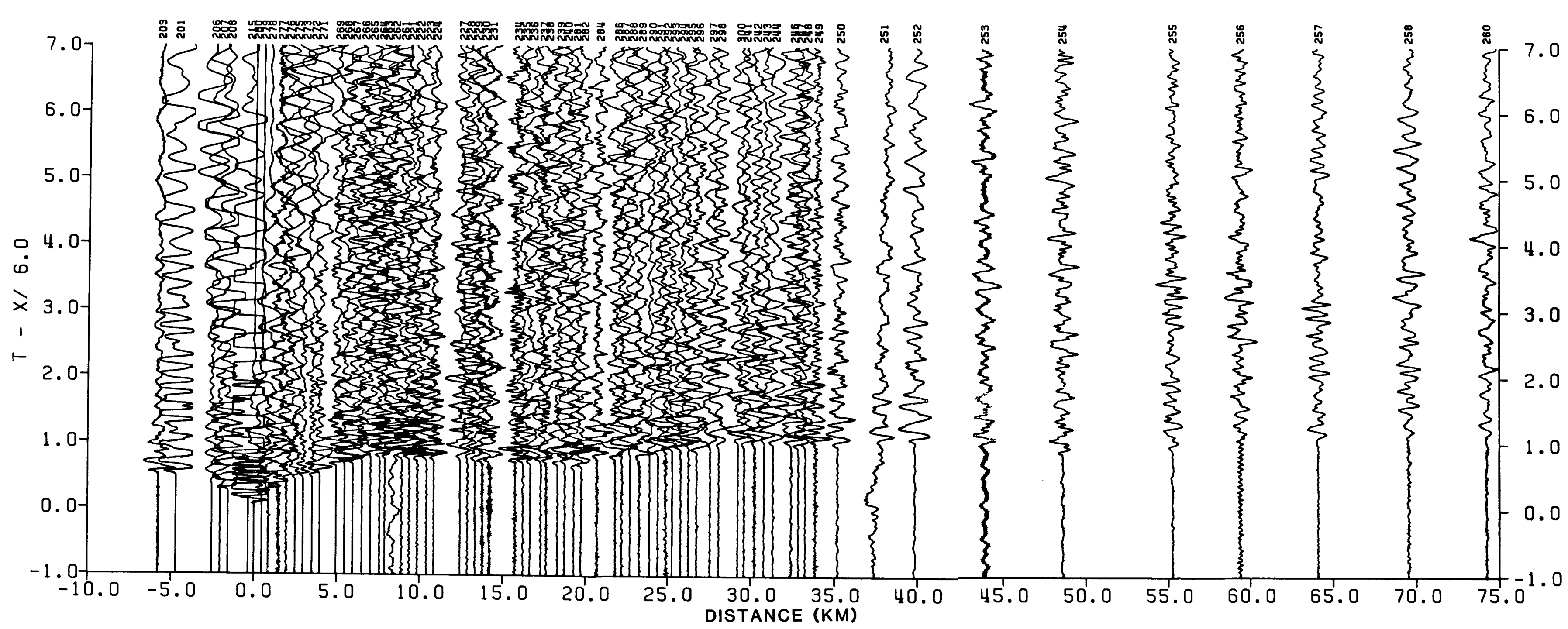
by  
 Patricia J. Meador and David P. Hill

1983

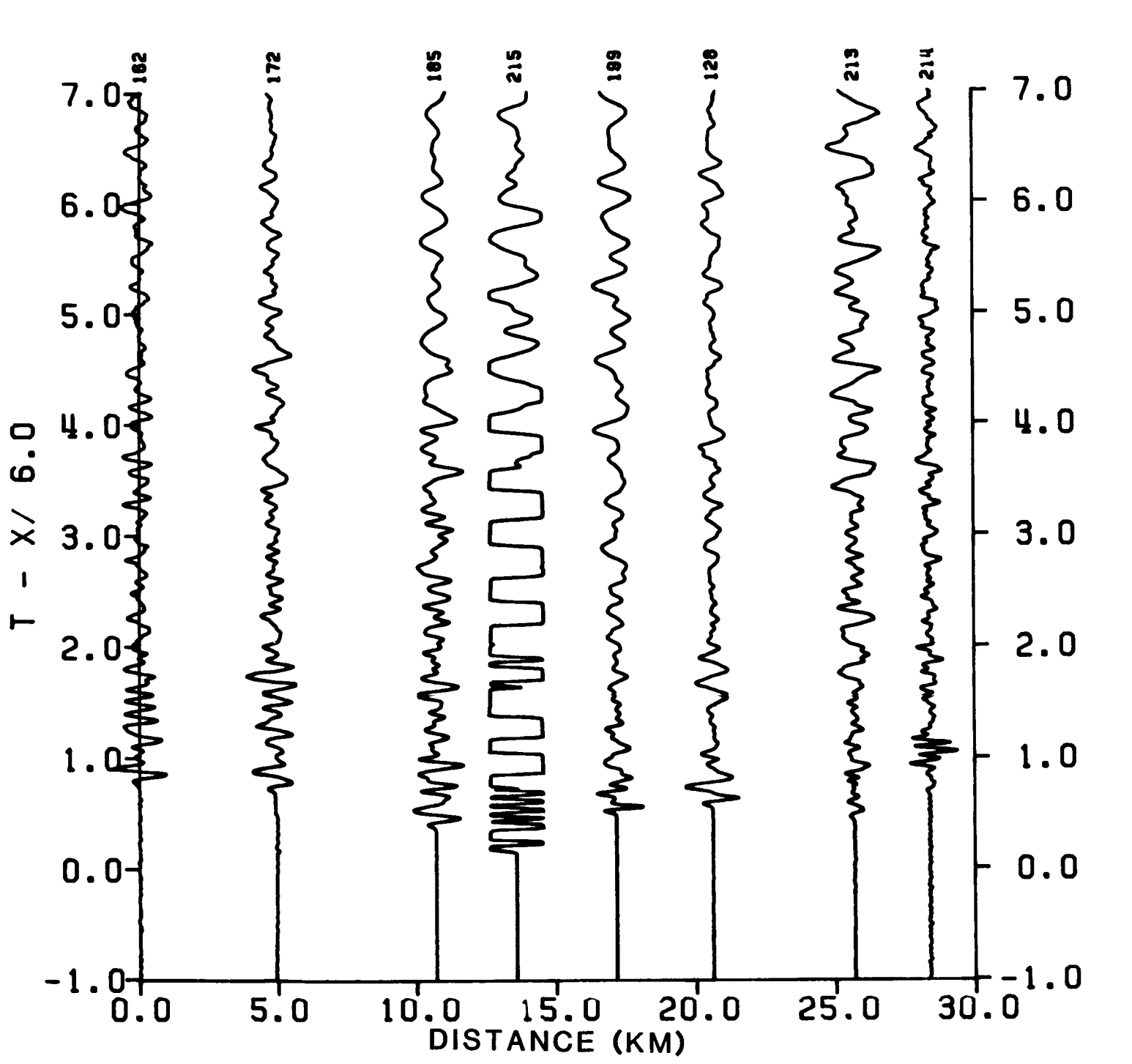
This report is preliminary and has not been reviewed for conformity with U.S. Geological Survey editorial standards and stratigraphic nomenclature. Any use of trade names is for descriptive purposes only and does not imply endorsement by the USGS.



filtered (2-15 Hz)



unfiltered

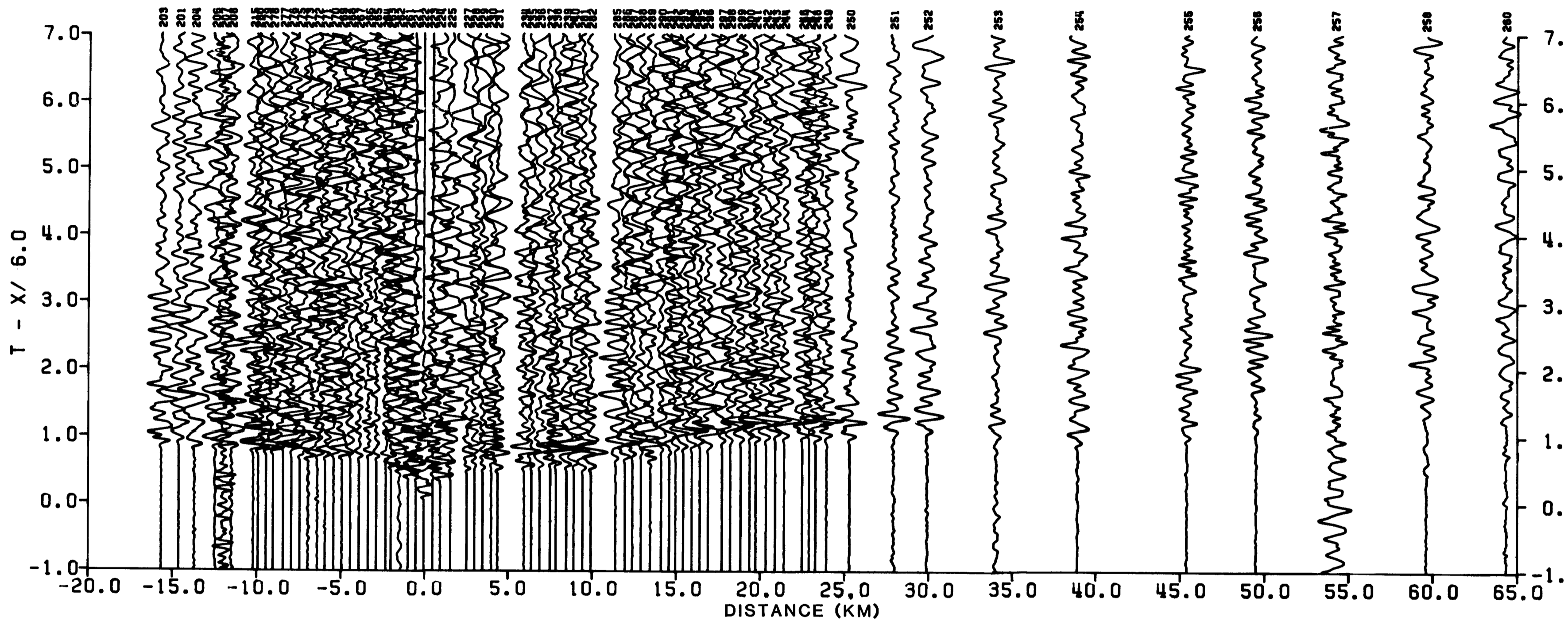


fan

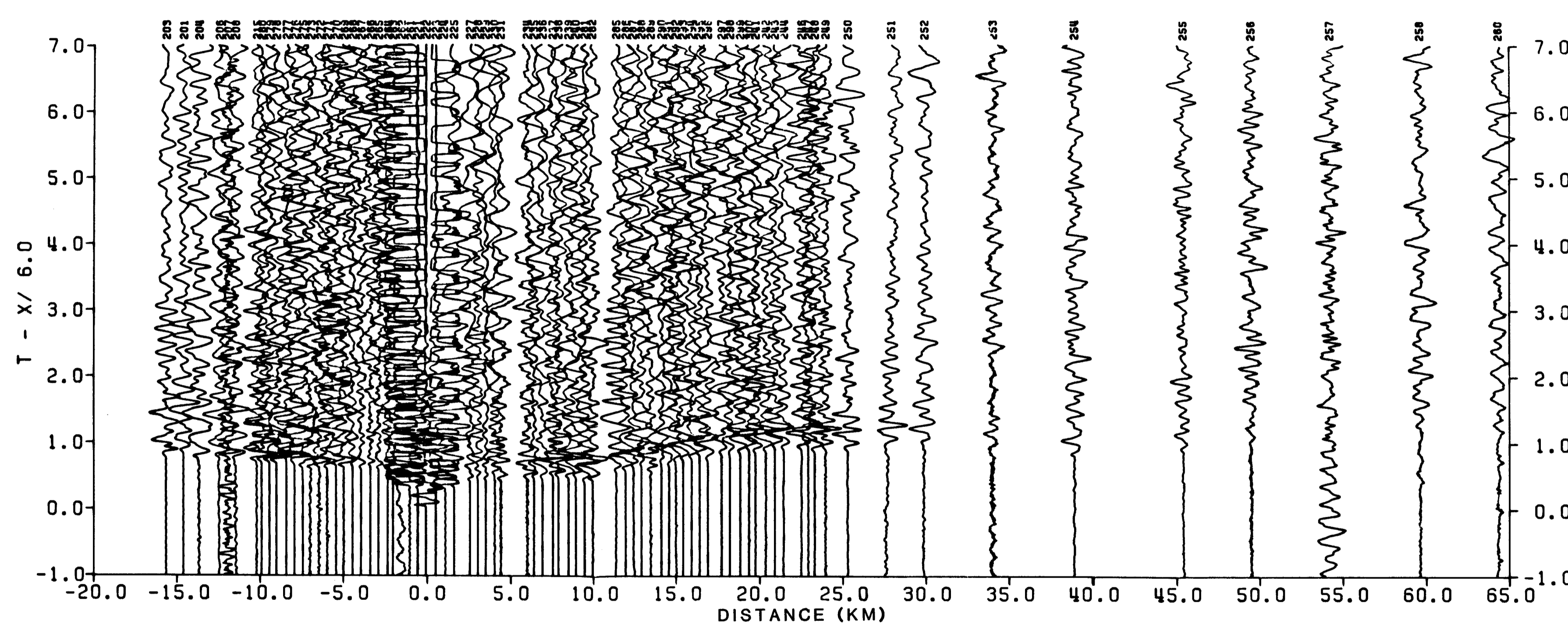
RECORD SECTIONS FROM THE LONG VALLEY REGION  
EAST-WEST PROFILE — SHOT 10, SHOTPOINT 5

by  
Patricia J. Meador and David P. Hill  
1983

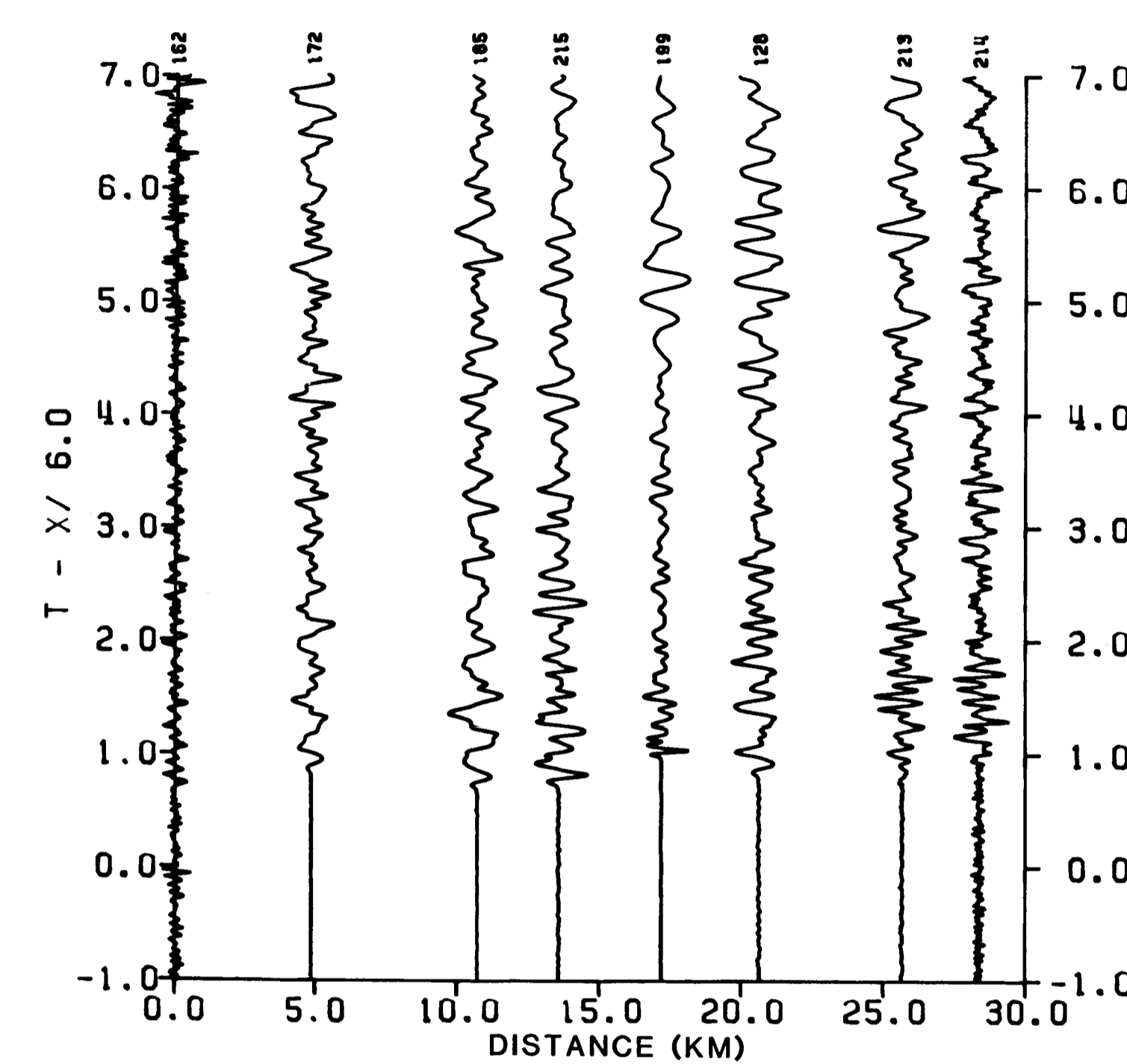
This report is preliminary and has not been reviewed for conformity with U.S. Geological Survey editorial standards and stratigraphic nomenclature. Any use of trade names is for descriptive purposes only and does not imply endorsement by the USGS.



filtered (2-15 Hz)



unfiltered



fan

RECORD SECTIONS FROM THE LONG VALLEY REGION  
EAST-WEST PROFILE — SHOT 11, SHOTPOINT 8

by  
Patricia J. Meador and David P. Hill  
1983

This report is preliminary and has not been reviewed for conformity with U.S. Geological Survey editorial standards and stratigraphic nomenclature. Any use of trade names is for descriptive purposes only and does not imply endorsement by the USGS.