

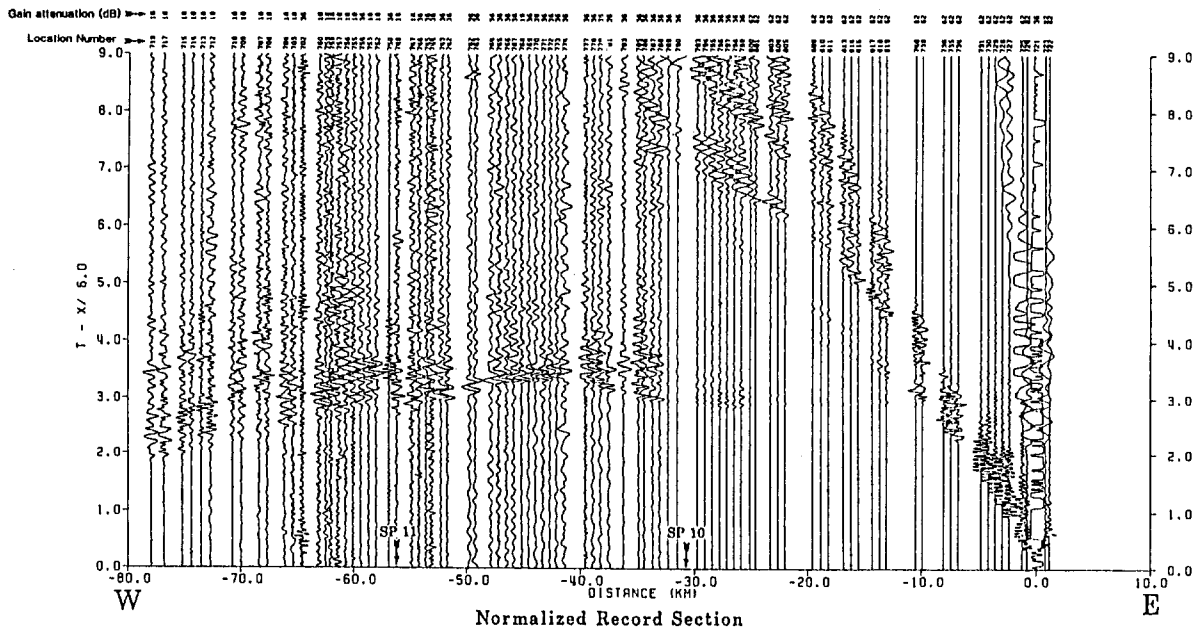
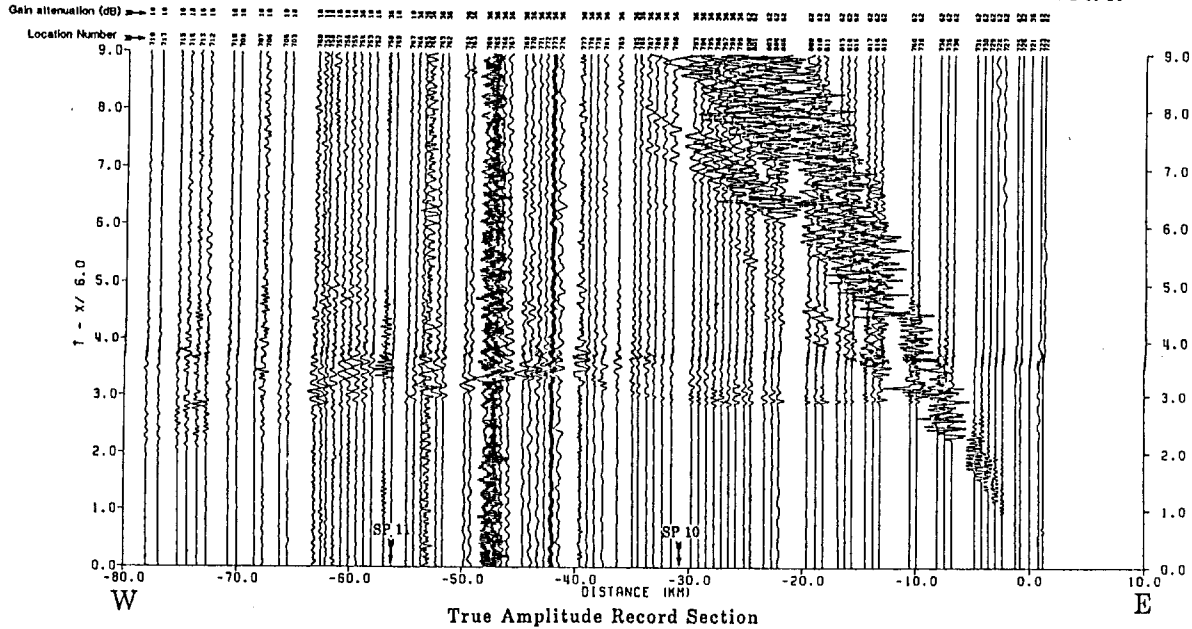
Scale 1:250,000

- | | | | |
|---------------------------------|---|--------------------------|--|
| Selamic Recorder Station | ▲ | U.S. Highway | |
| Shot Point Location | * | Interstate Highway | |
| May 2, 1983 Mainshock Epicenter | ☆ | California State Highway | |

This report is preliminary and has not been reviewed for conformity with U.S. Geological Survey editorial standards and stratigraphic nomenclature.

COALINGA, CALIFORNIA - DEPLOYMENT MAP

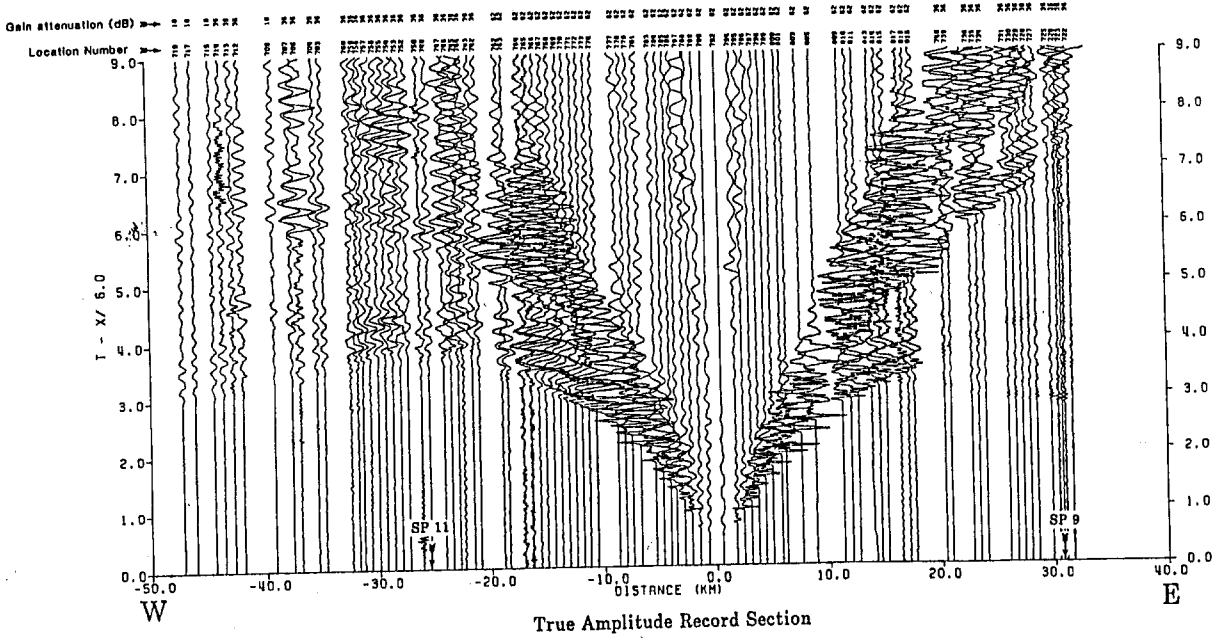
by
 Robert H. Colburn and Alan W. Walter
 1984



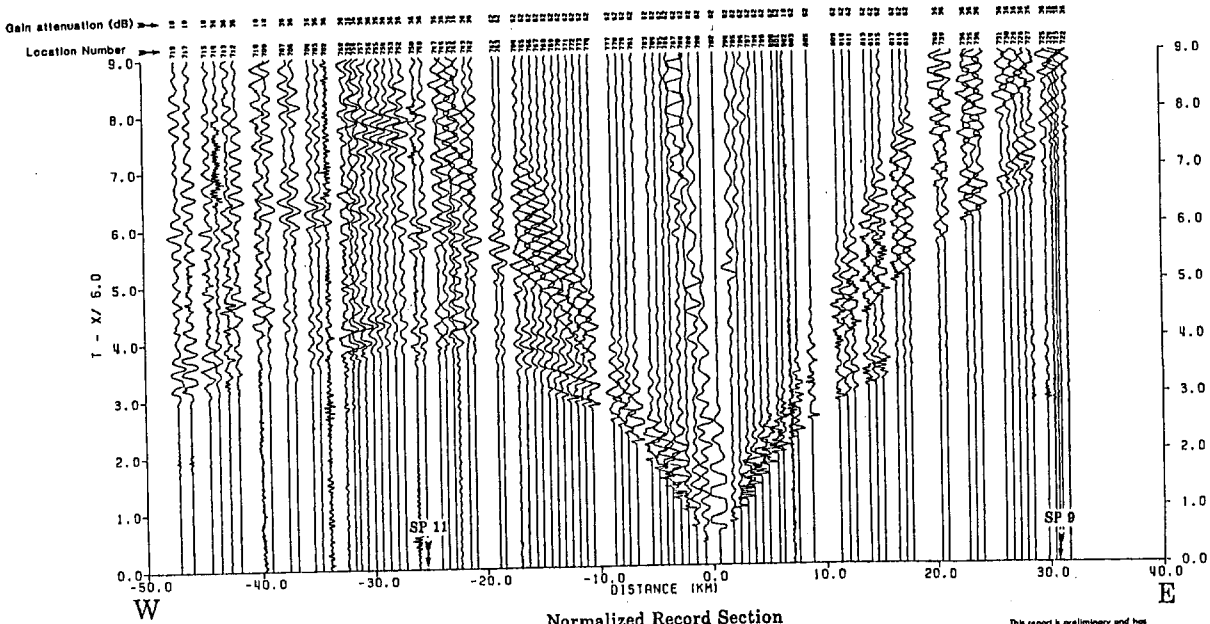
COALINGA, CALIFORNIA - EAST-WEST PROFILE
 SHOTPOINT 9, SHOT 10

by
 Robert H. Colburn and Alan W. Walter
 1984

This report is preliminary and has not been reviewed for conformity with U.S. Geological Survey editorial standards and stratigraphic nomenclature.



True Amplitude Record Section

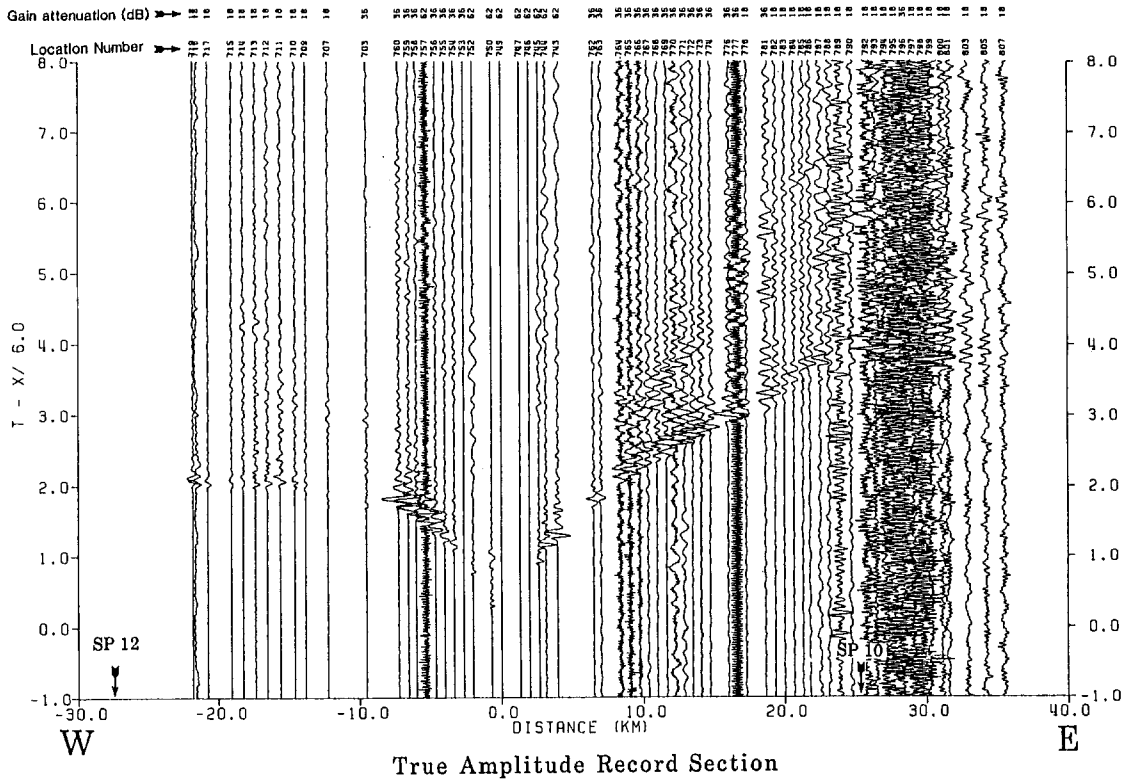


Normalized Record Section

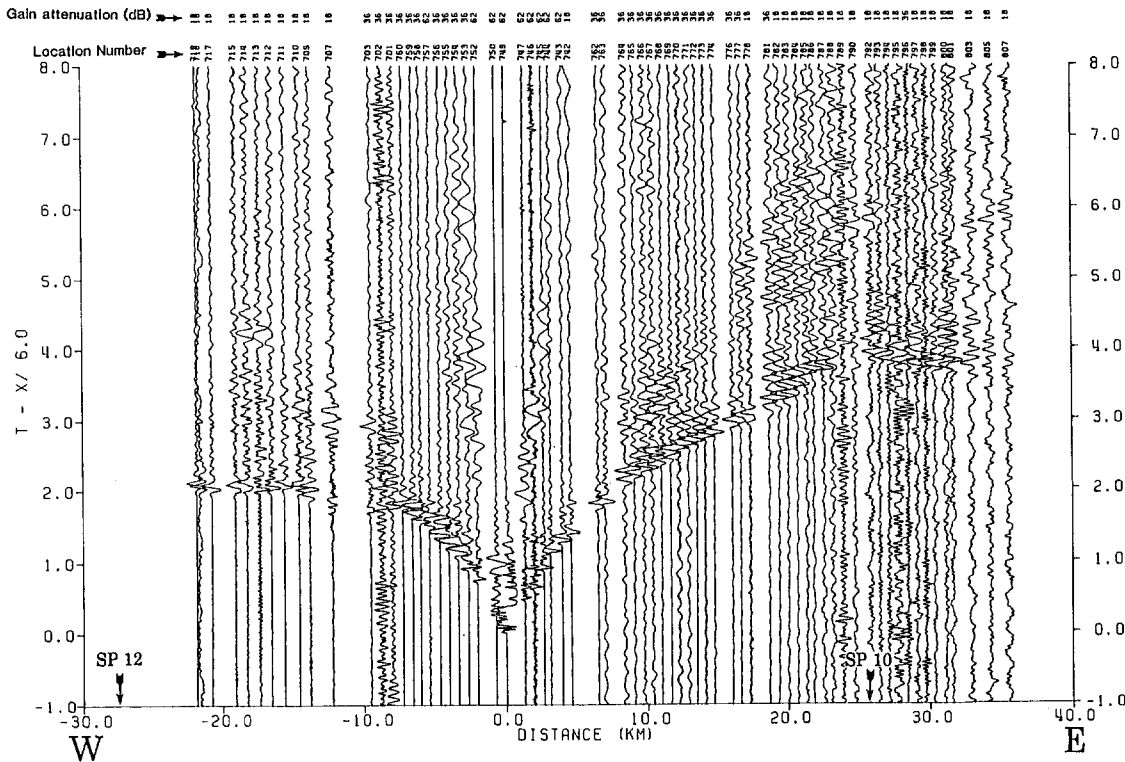
COALINGA, CALIFORNIA - EAST-WEST PROFILE
 SHOTPOINT 10, SHOT 11

by
 Robert H. Colburn and Alan W. Walter
 1984

This report is preliminary and has not been reviewed for conformity with U.S. Geological Survey editorial standards and stratigraphic nomenclature.



True Amplitude Record Section



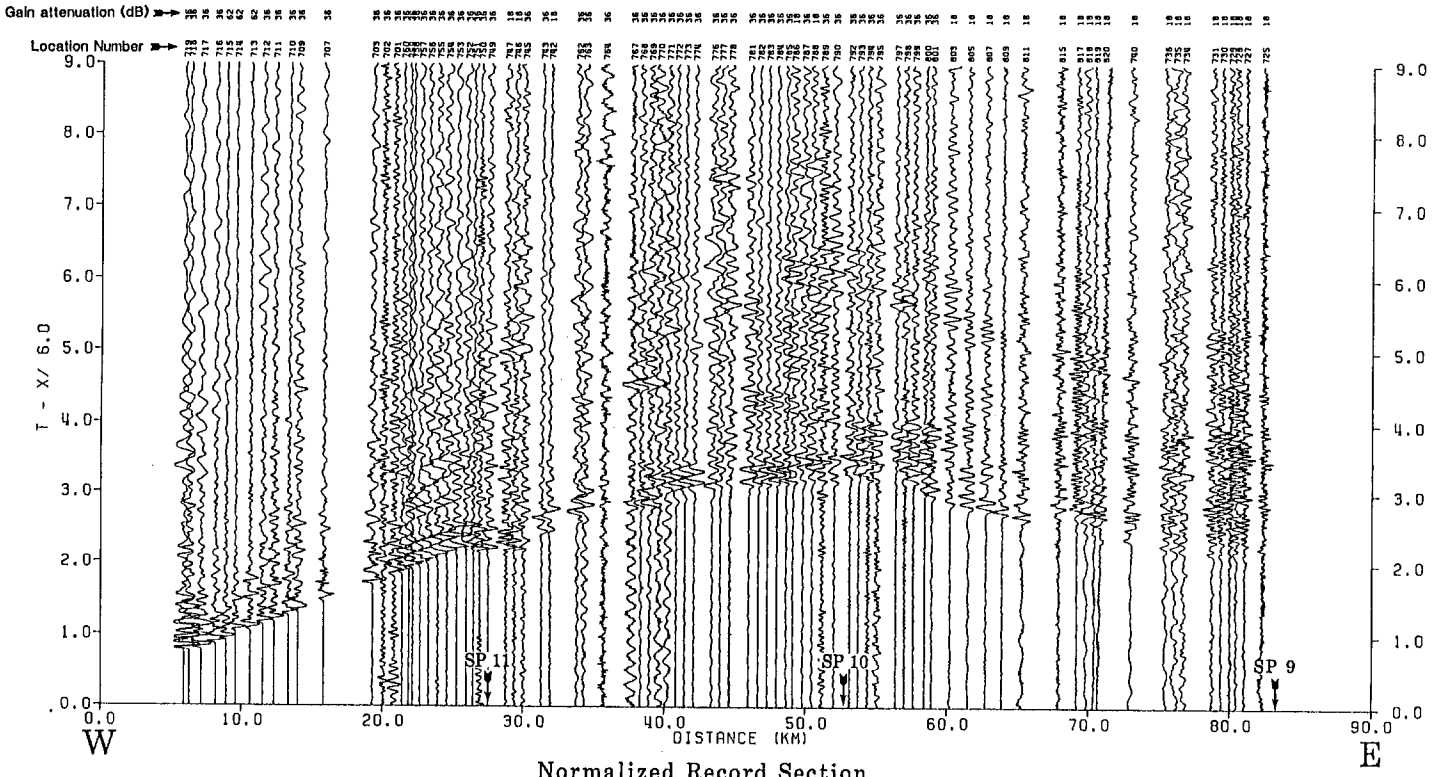
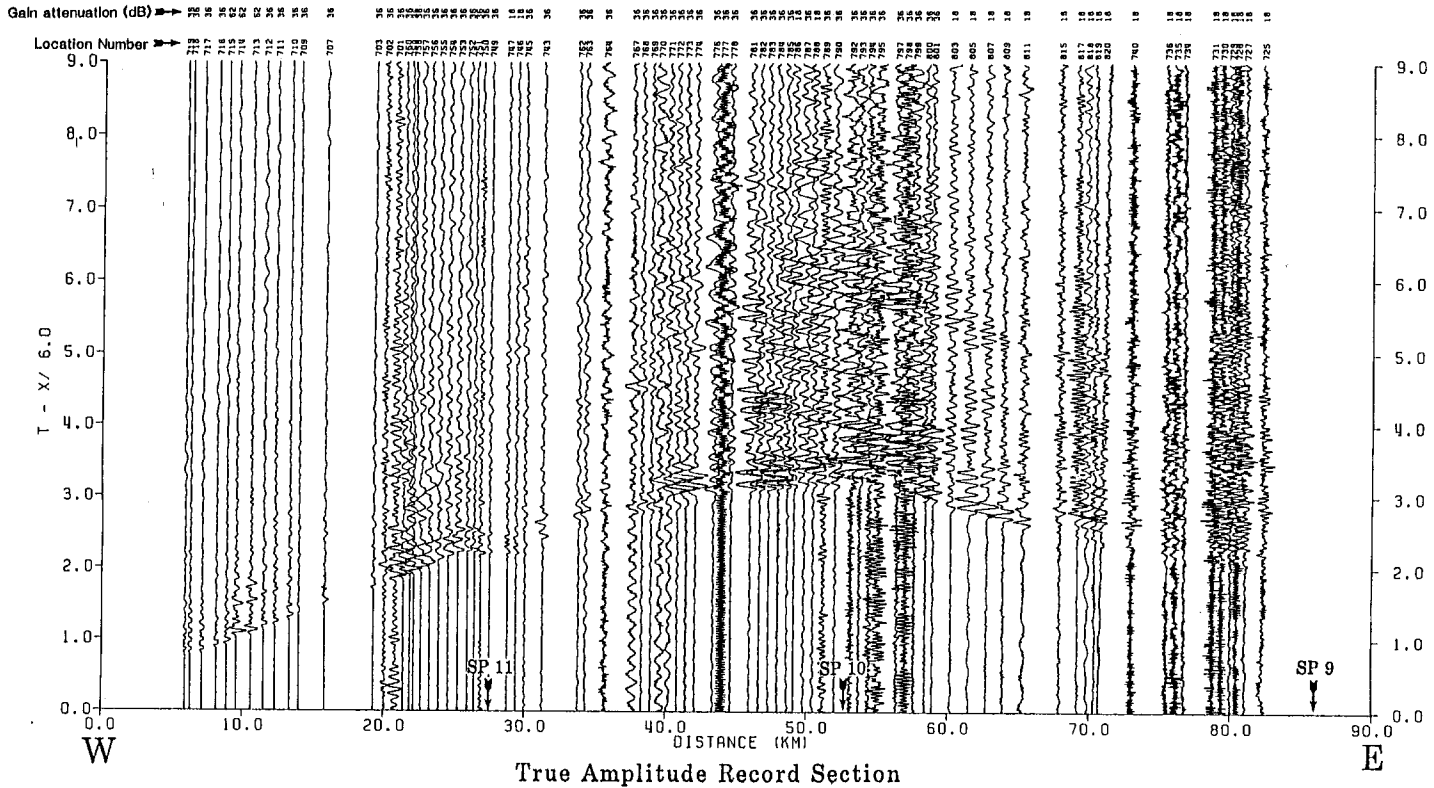
Normalized Record Section

COALINGA, CALIFORNIA - EAST-WEST PROFILE
 SHOTPOINT 11, SHOT 12

by
 Robert H. Colburn and Alan W. Walter
 1984

This report is preliminary and has not been reviewed for conformity with U.S. Geological Survey editorial standards and stratigraphic nomenclature.

DEPARTMENT OF THE INTERIOR
UNITED STATES GEOLOGICAL SURVEY

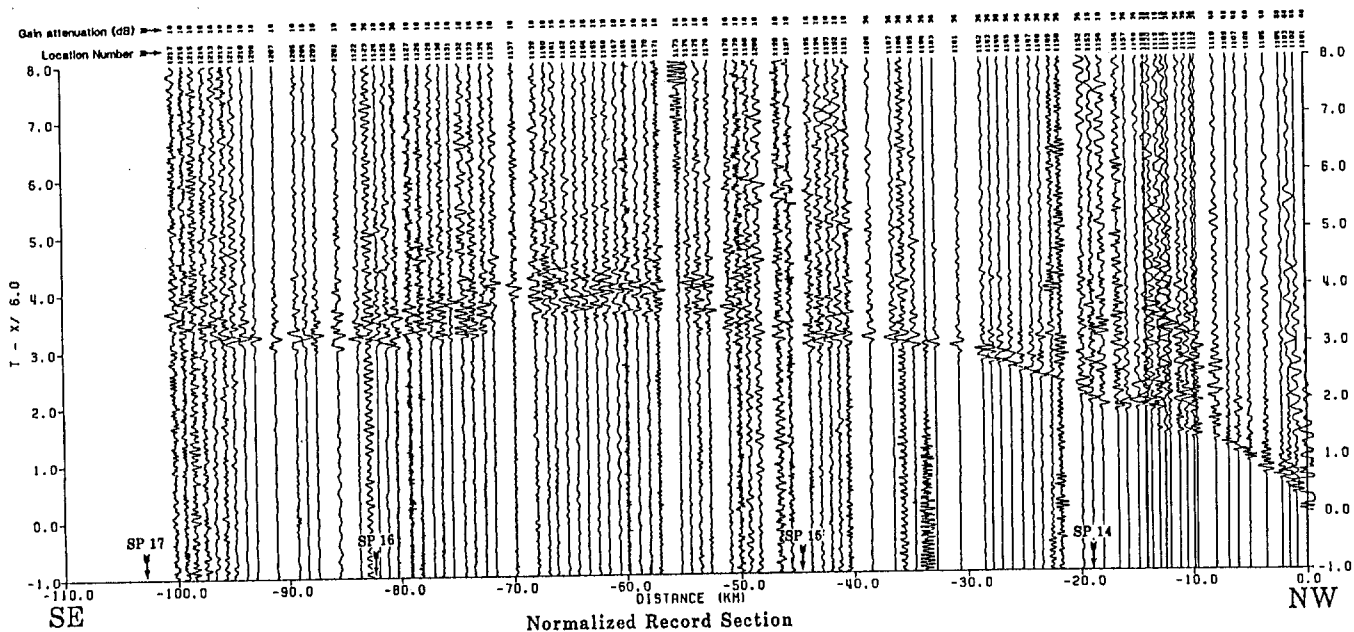
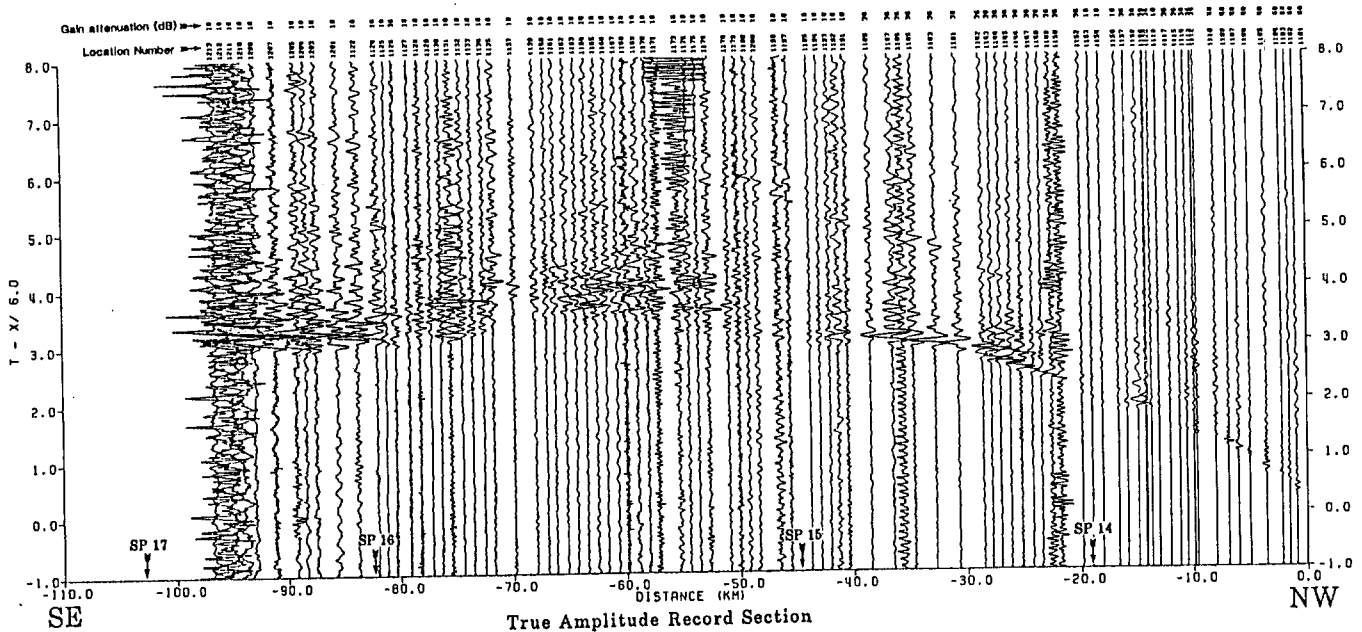


COALINGA, CALIFORNIA - EAST-WEST PROFILE
SHOTPOINT 12, SHOT 13

by
Robert H. Colburn and Alan W. Walter

1984

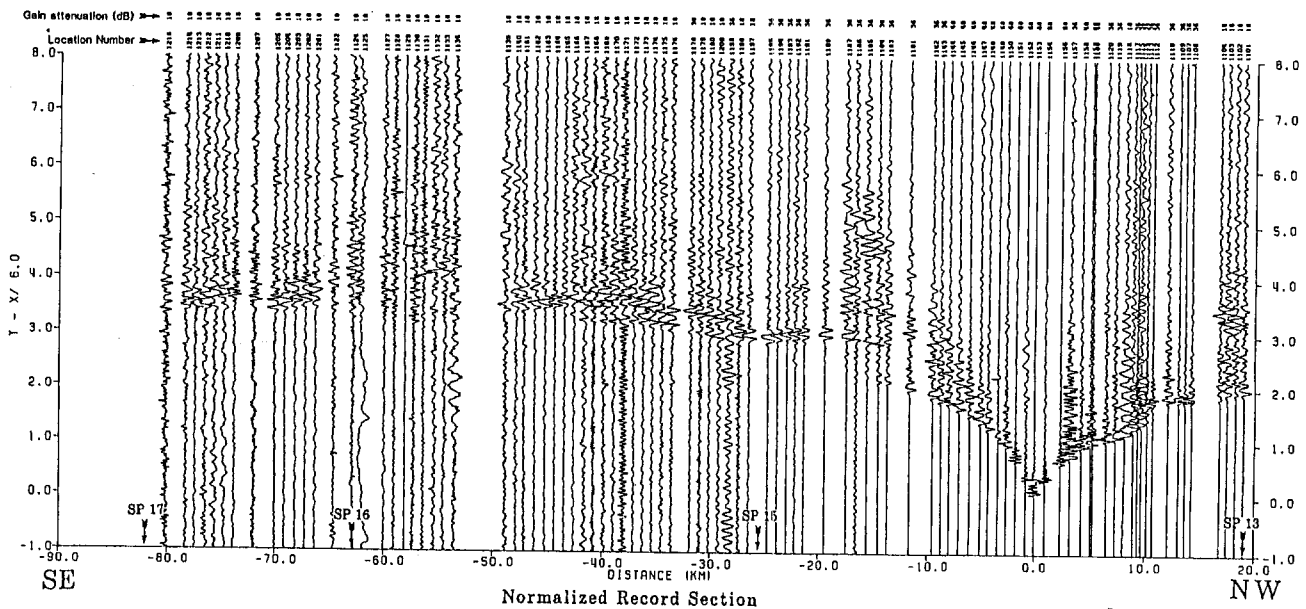
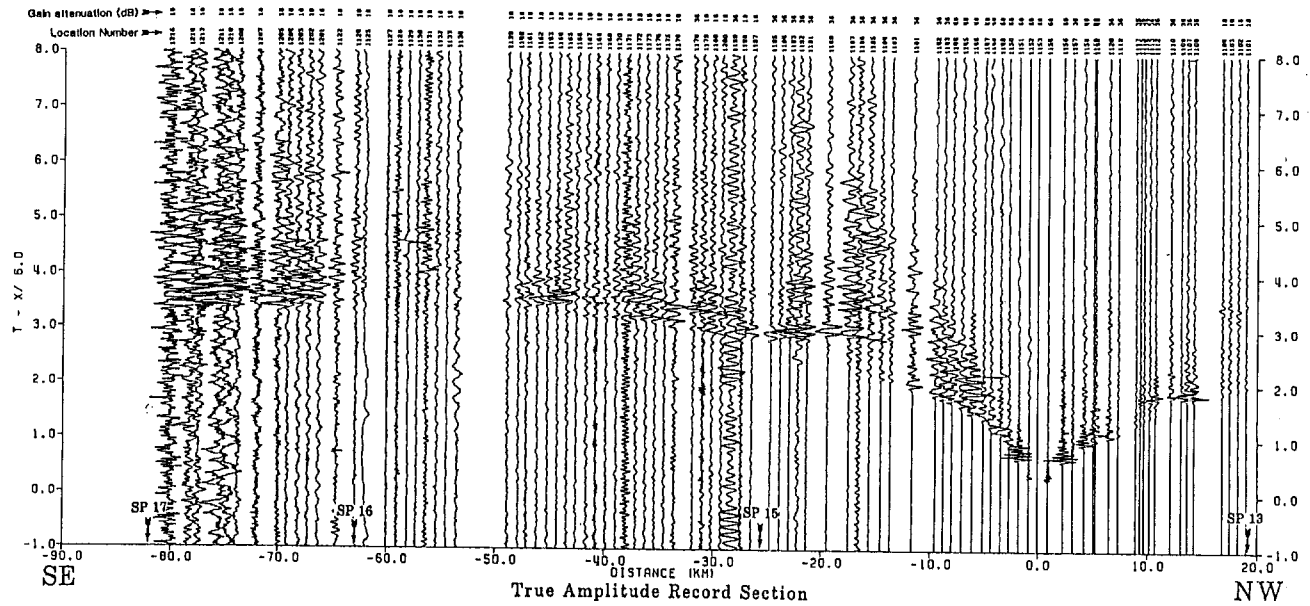
This report is preliminary and has not been reviewed for conformity with U.S. Geological Survey editorial standards and stratigraphic nomenclature.



COALINGA, CALIFORNIA - NORTHWEST-SOUTHEAST PROFILE
 SHOTPOINT 13, SHOT 16

by
 Robert H. Colburn and Alan W. Walter
 1984

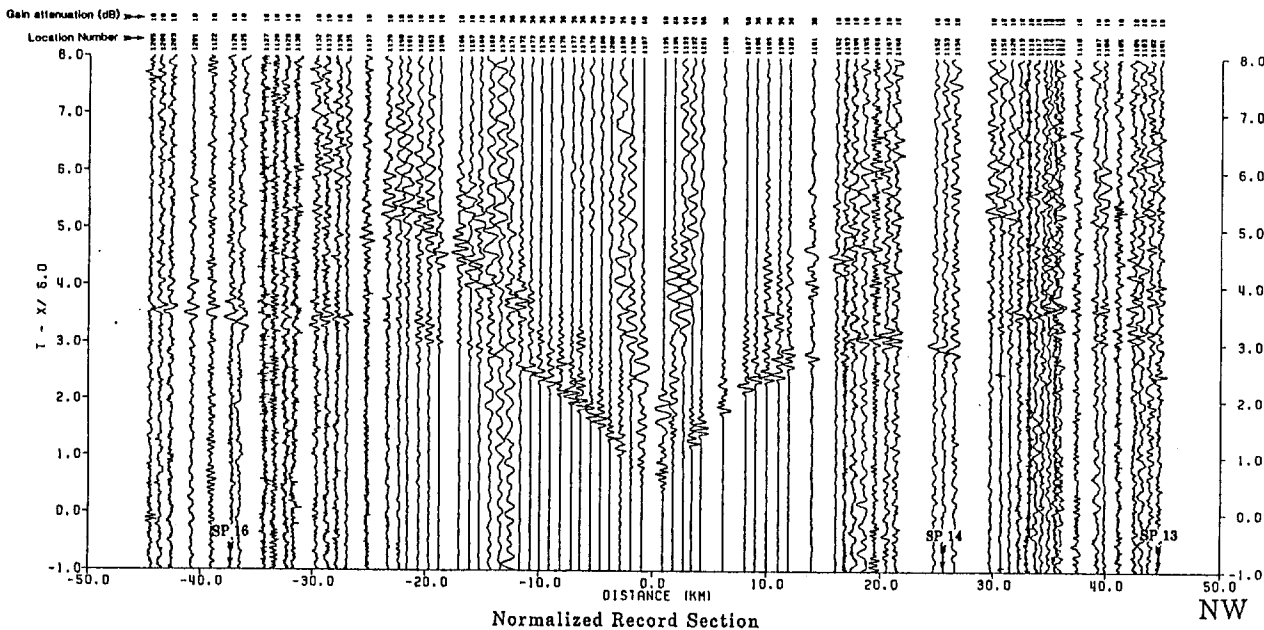
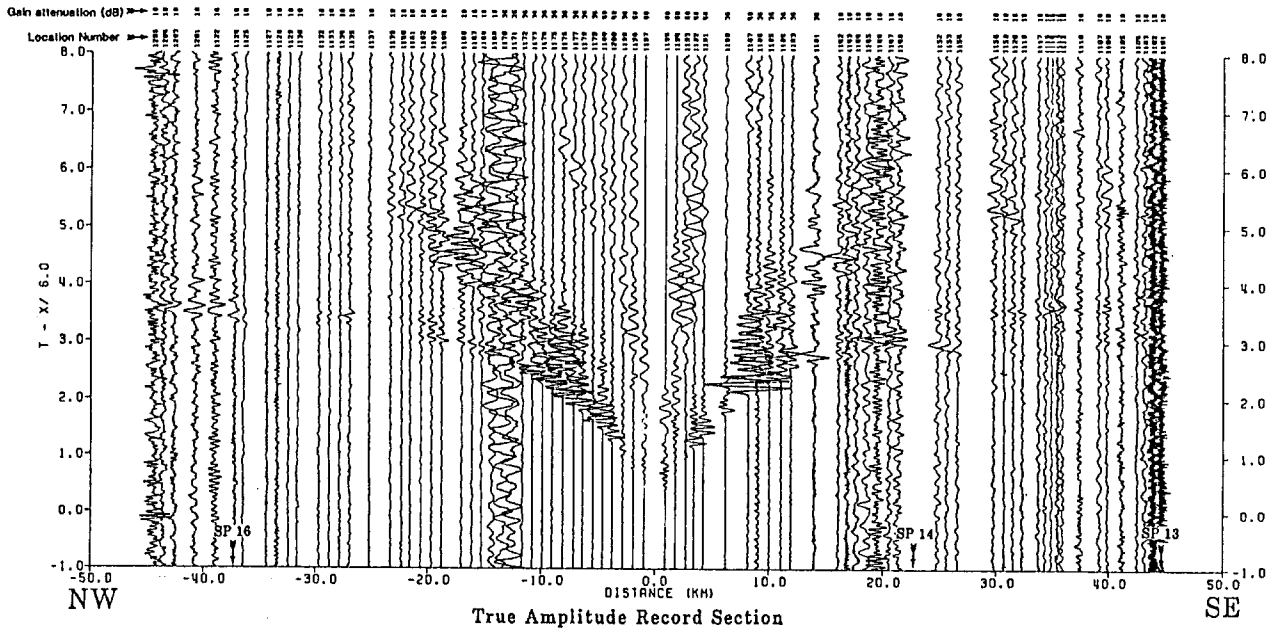
This report is preliminary and has not been reviewed for conformity with U.S. Geological Survey editorial standards and cartographic nomenclature.



COALINGA, CALIFORNIA - NORTHWEST-SOUTHEAST PROFILE
 SHOTPOINT 14, SHOT 14

by
 Robert H. Colburn and Alan W. Walter
 1984

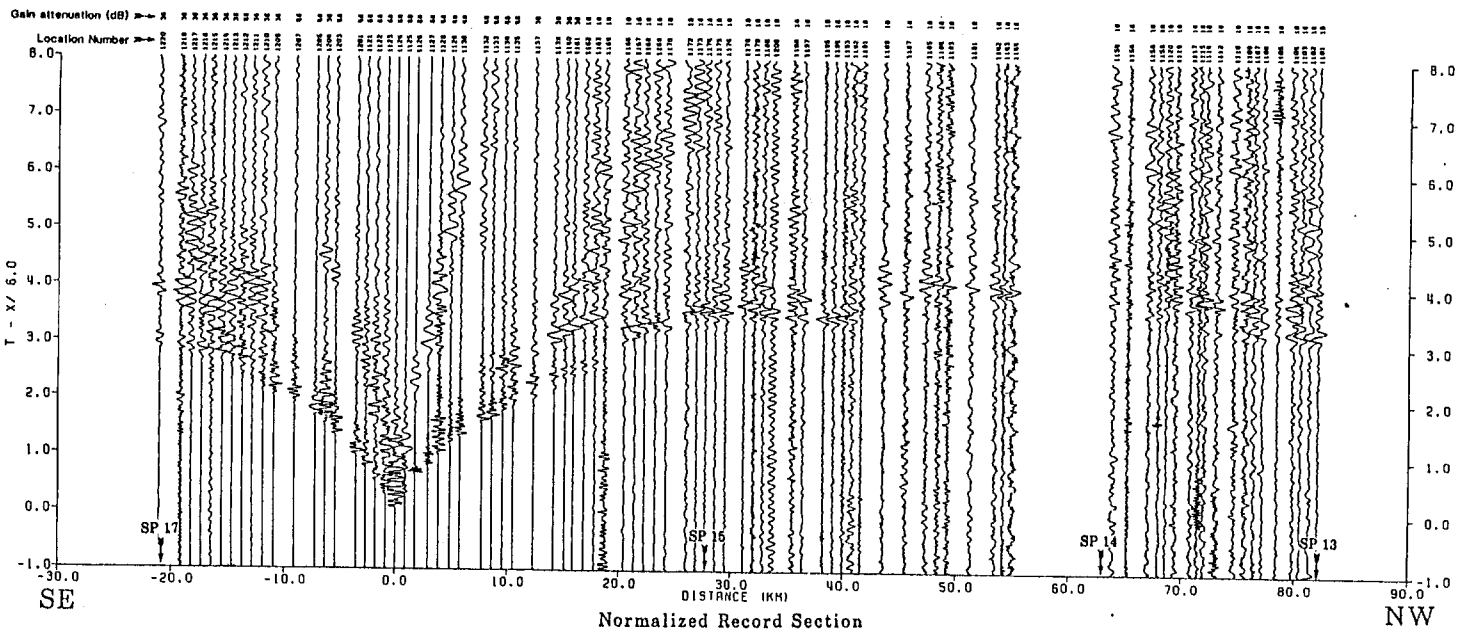
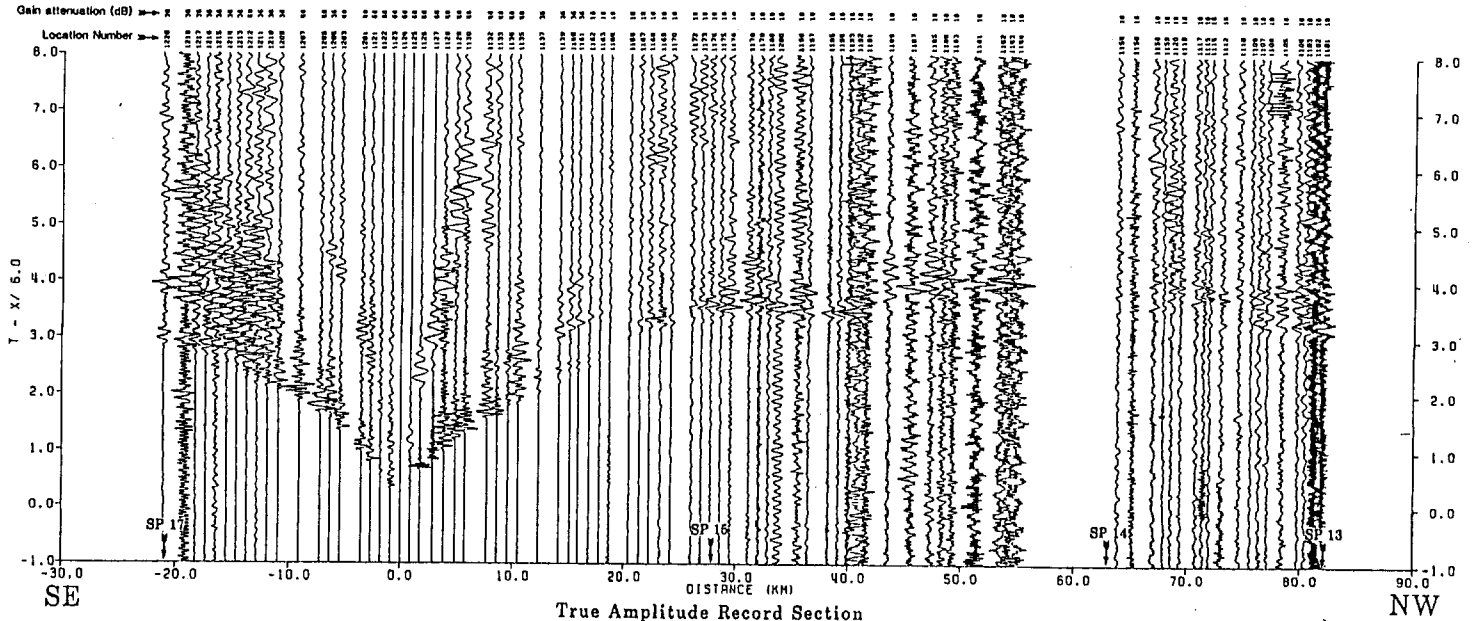
This report is preliminary and has not been reviewed for conformity with U.S. Geological Survey editorial standards and stratigraphic nomenclature.



COALINGA, CALIFORNIA - NORTHWEST-SOUTHEAST PROFILE
 SHOTPOINT 15, SHOT 17

by
 Robert H. Colburn and Alan W. Walter
 1984

This report is preliminary and has
 not been reviewed for conformity
 with U.S. Geological Survey editorial
 standards and stratigraphic nomenclature.

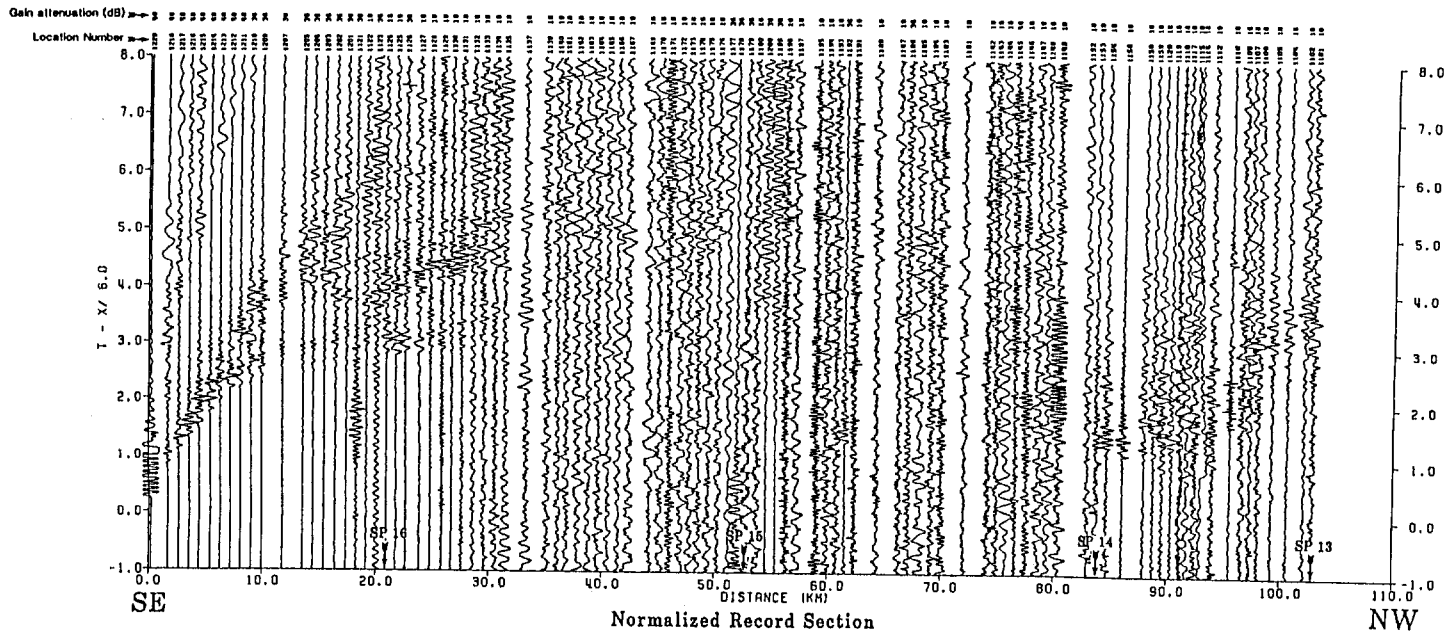
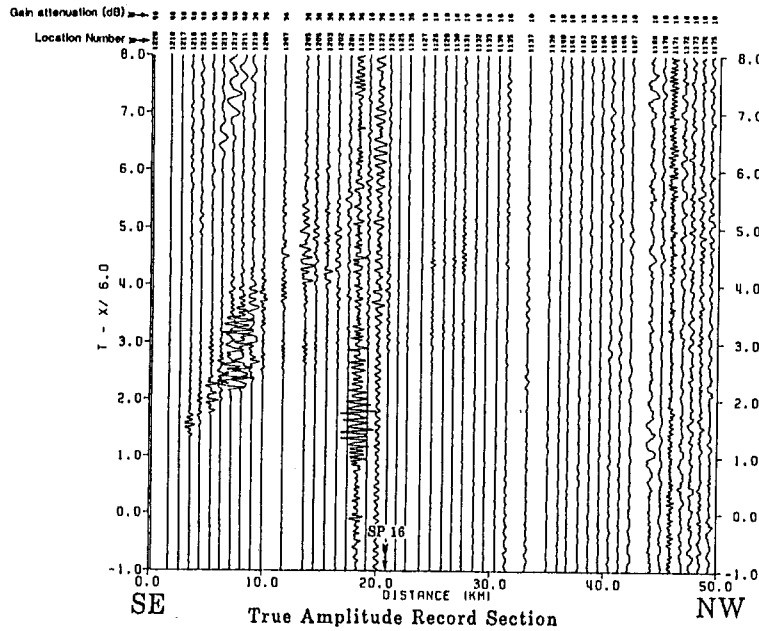


COALINGA, CALIFORNIA - NORTHWEST-SOUTHEAST PROFILE
SHOTPOINT 16, SHOT 18

by
Robert H. Colburn and Alan W. Walter

1984

This report is preliminary and has
not been reviewed for conformity
with U.S. Geological Survey editorial
standards and stratigraphic nomenclature.



COALINGA, CALIFORNIA - NORTHWEST-SOUTHEAST PROFILE
 SHOTPOINT 17, SHOT 15

by
 Robert H. Colburn and Alan W. Walter
 1984

This report is preliminary and has not been reviewed for conformity with U.S. Geological Survey editorial standards and stratigraphic nomenclature.