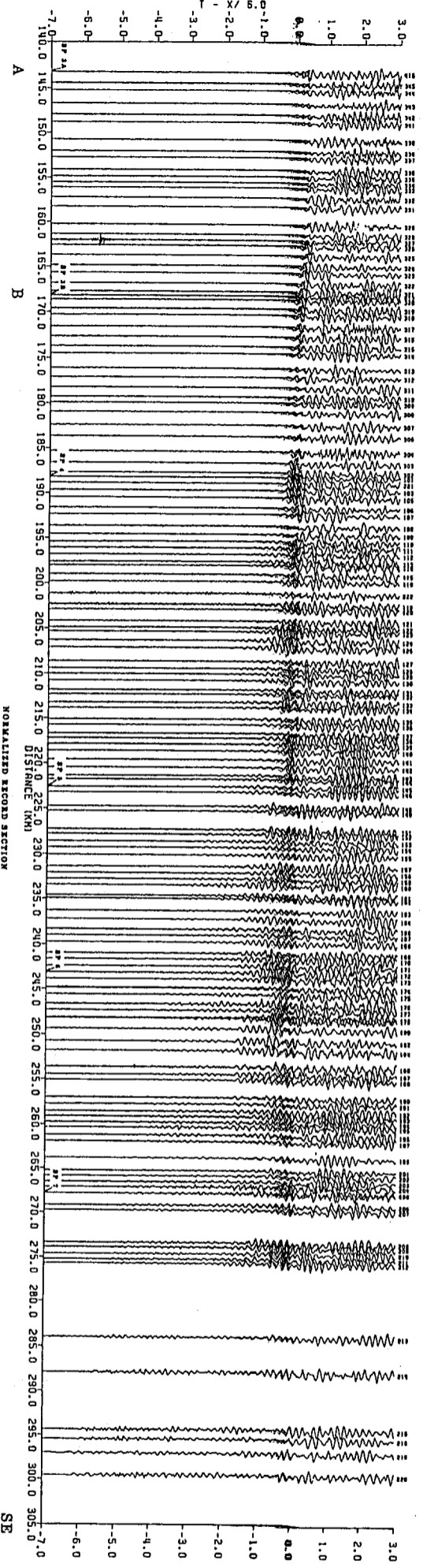
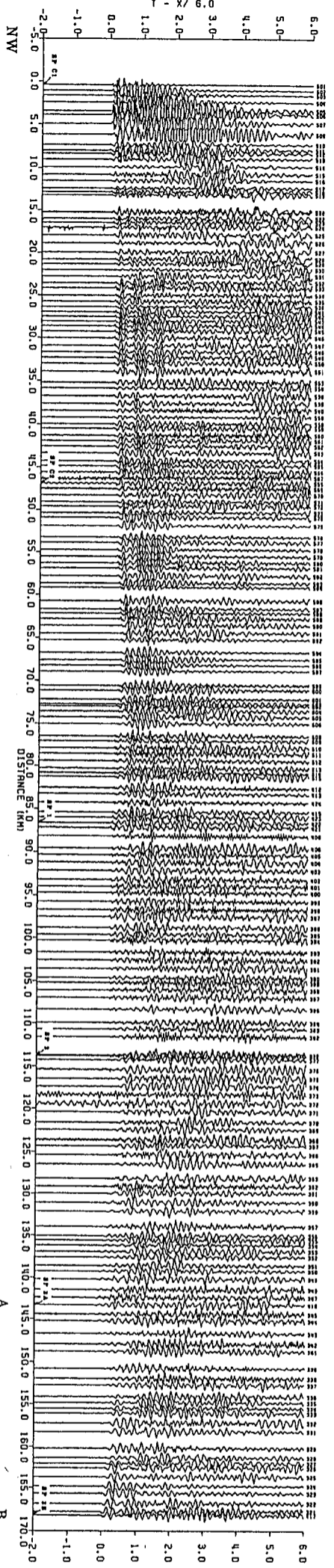


DEER-ISLE
BLACK LAKE
PLATE 1 OF 18

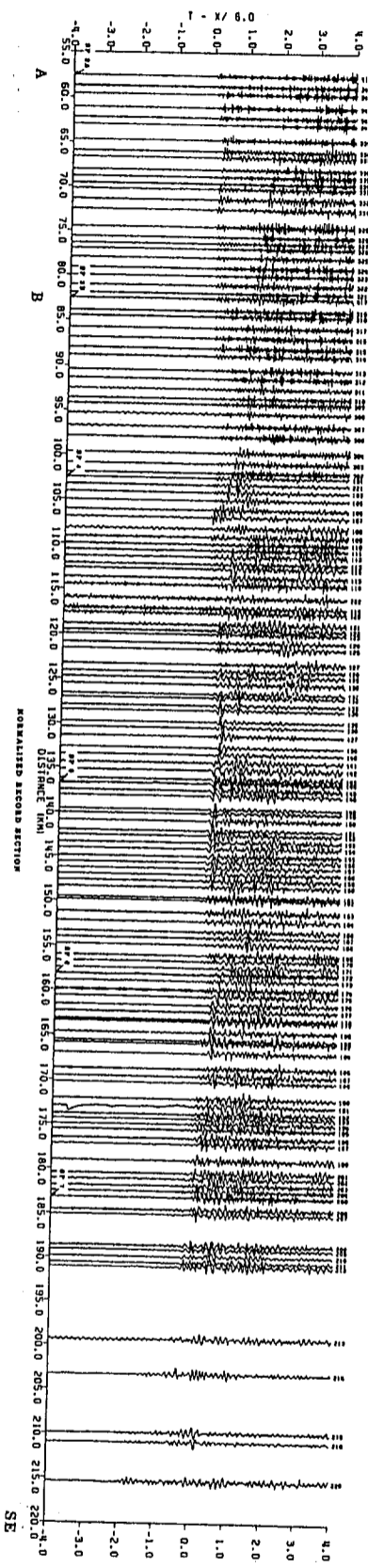
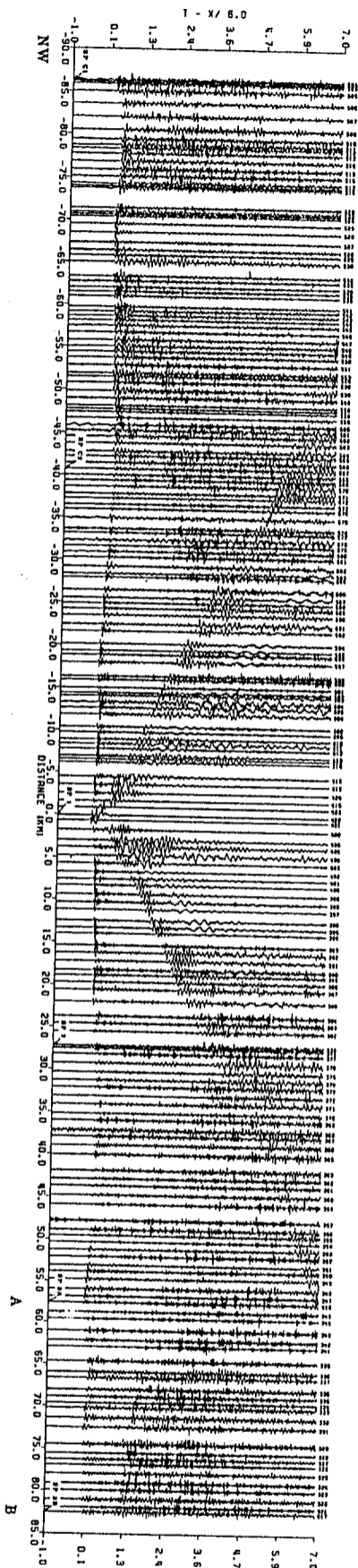
DEPLOYMENTS 1, 2, AND 3 : DEER ISLE TO BLACK LAKE
by
J.M. Murphy and J.H. Lastfert
1986

This document is copyrighted by the
United States Geological Survey and
is in the public domain in the
United States of America.



BLACK LAKE TO DEER ISLE
SHOT POINT C1
by
J.M. Murphy and J.H. Luetgert
1986

This report is preliminary and has not been reviewed by the U.S. Geological Survey.

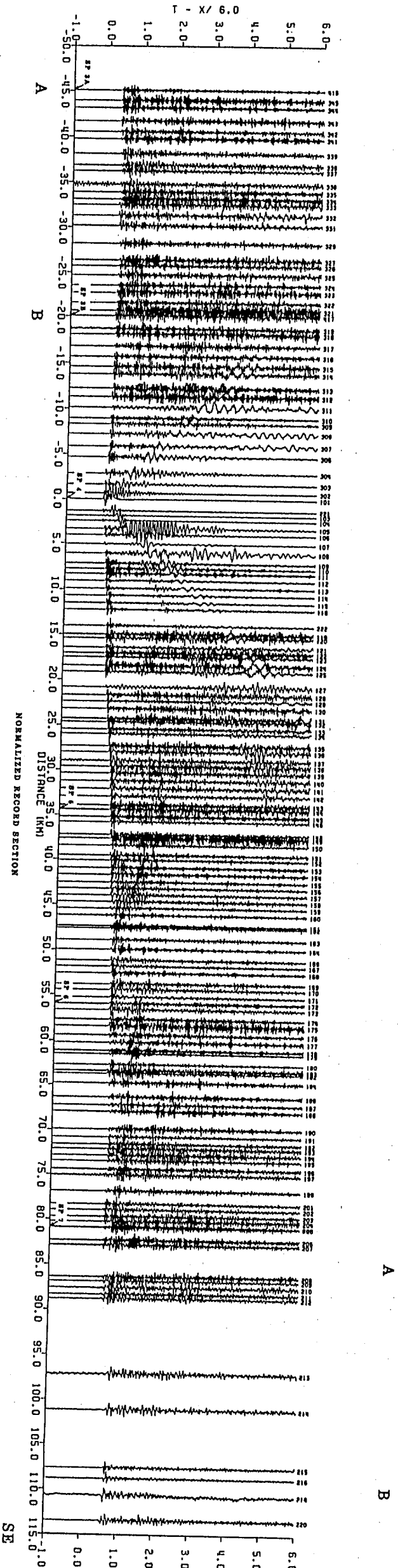
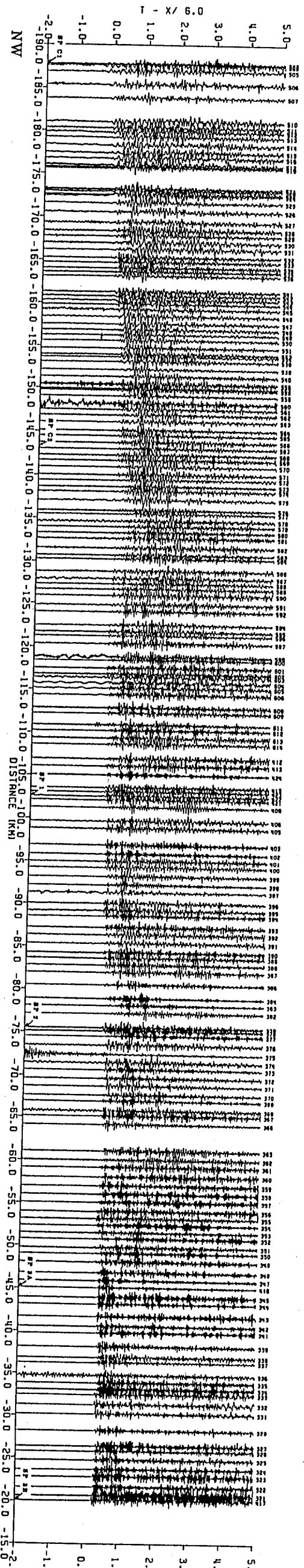


NORMALIZED RECORD SECTION

BLACK LAKE TO DEER ISLE
SHOT POINT 1

by
J.M. Murphy and J.H. Leetsort
1986

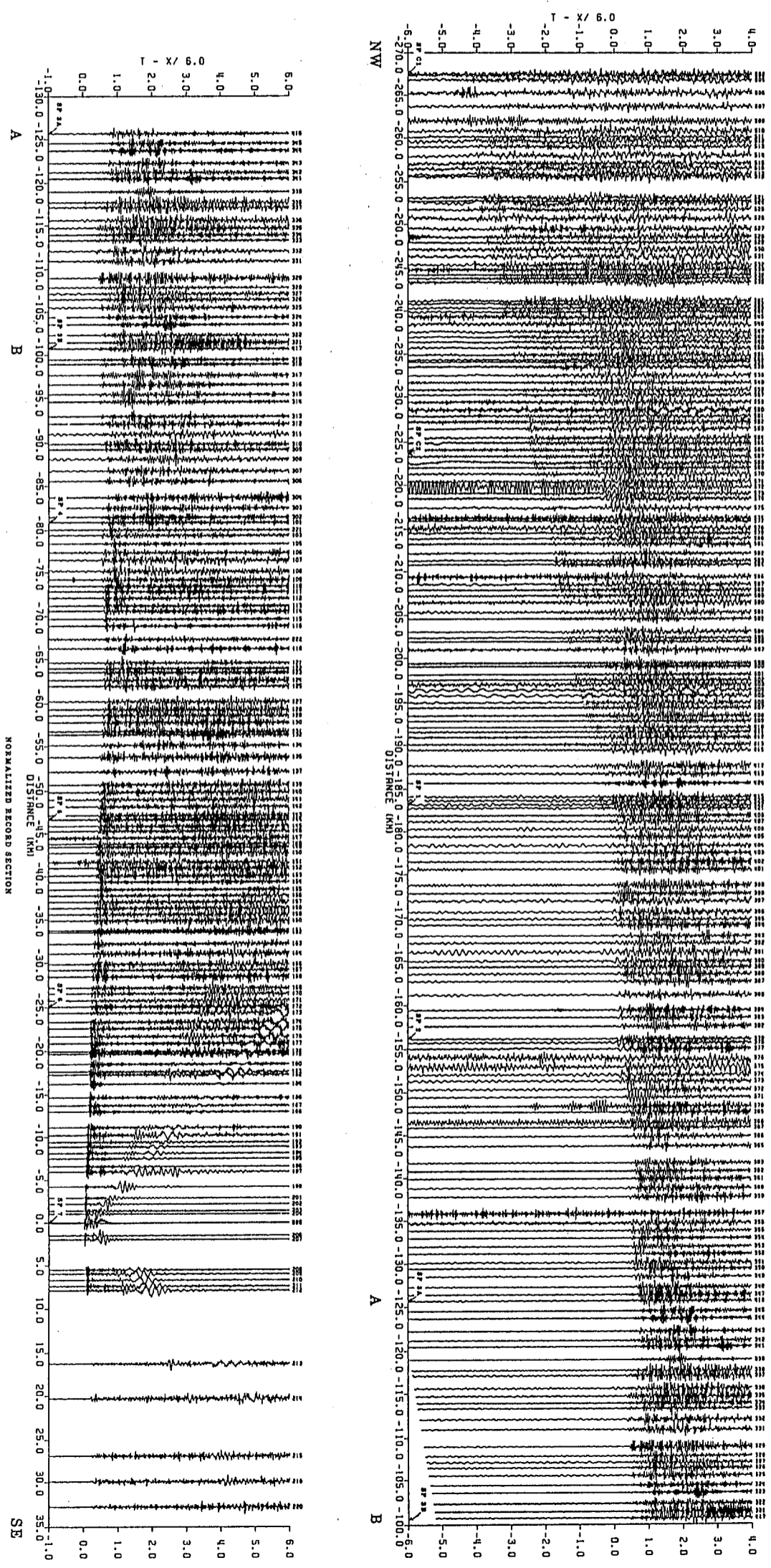
This report is preliminary and has not been reviewed by the U.S. Geological Survey.



BLACK LAKE TO DEER ISLE
SHOT POINT 4

by
J.M. Murphy and J.H. Luetfert
1986

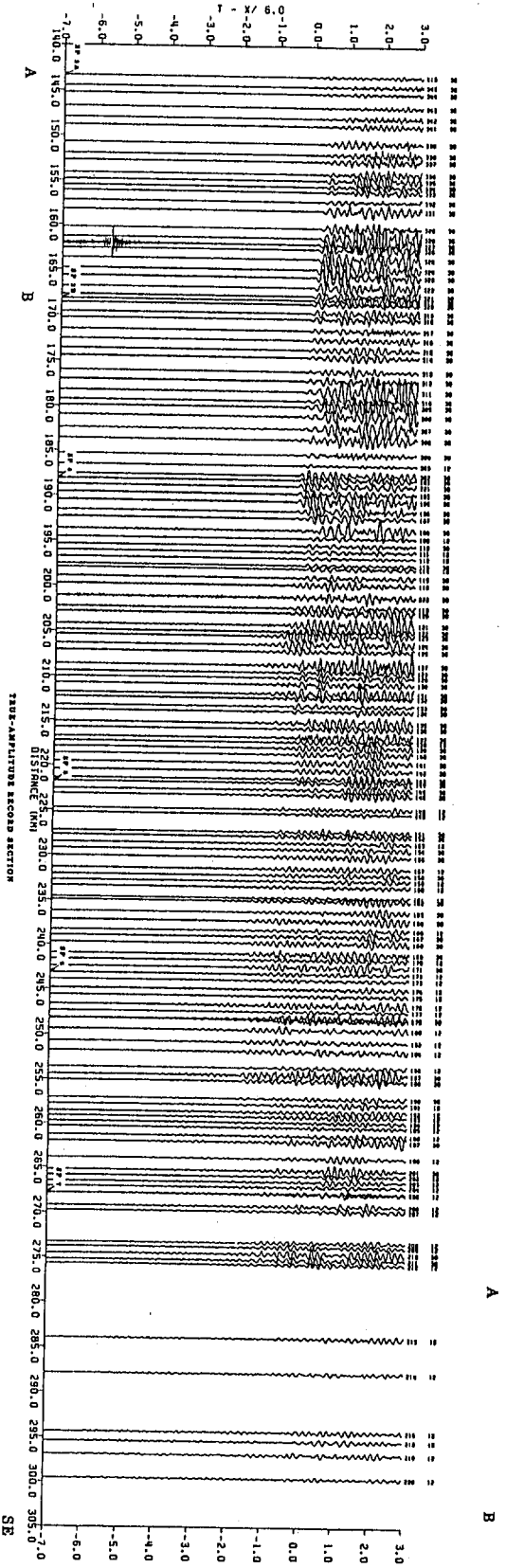
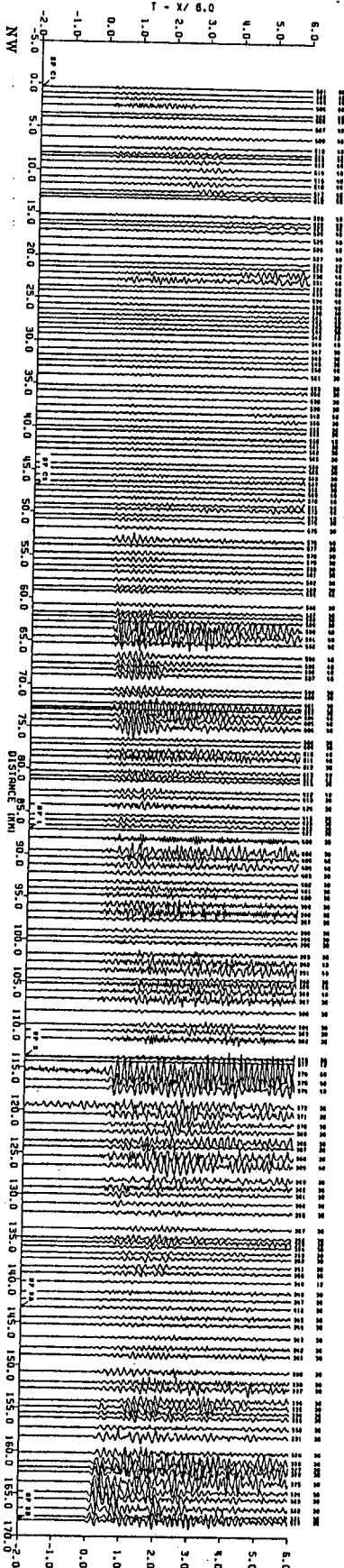
NORMALIZED RECORD SECTION



BLACK LAKE TO DEER ISLE
 SHOT POINT 7

by
 J.M. Murphy and J.H. Luetgeert
 1986

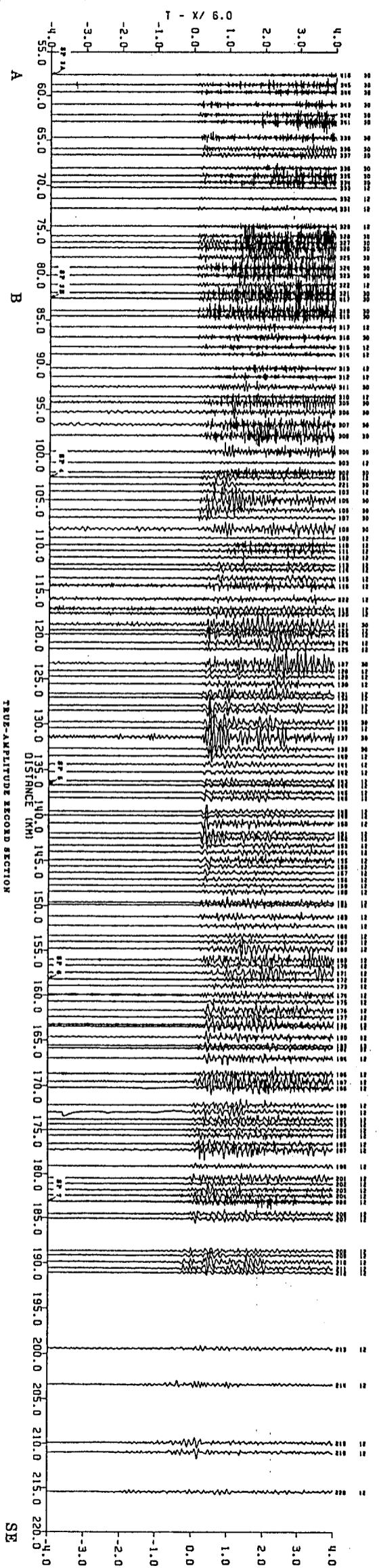
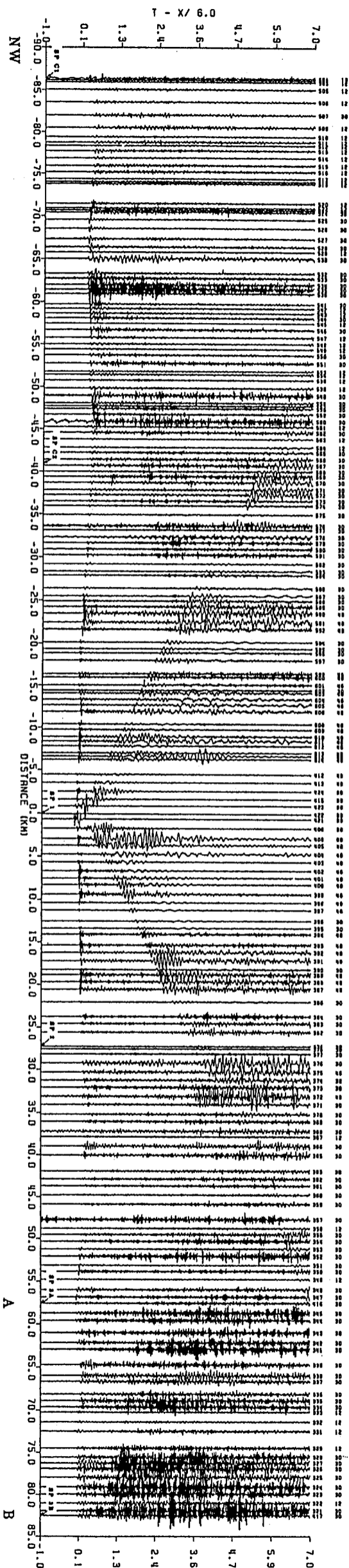
This report is preliminary and has not been reviewed for conformity with U.S. Geological Survey standards.



7358-AMPLITUDE RECORD SECTION

BLACK LAKE TO DEER ISLE
SHOT POINT CI

by
J.M. Murphy and J.H. Luedert
1966



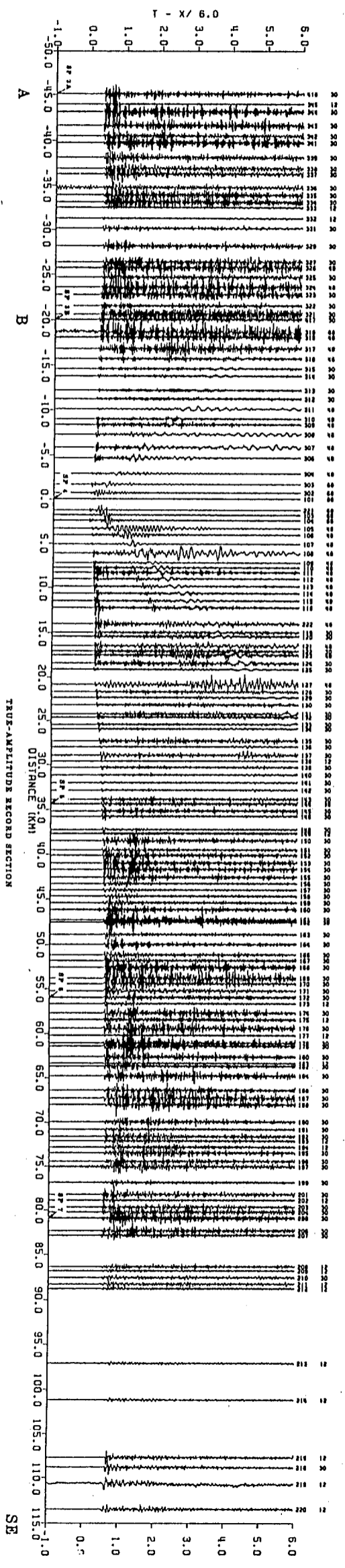
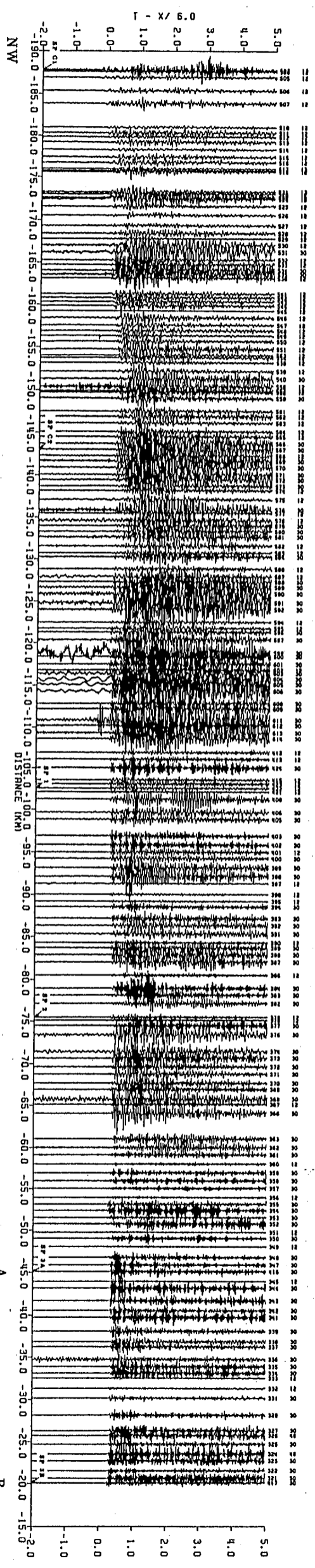
TRUE-AMPLITUDE RECORD SECTION

BLACK LAKE TO DEER ISLE
SHOT POINT 1

by
J.M. Murphy and J.H. Luetfert

1986

This report is preliminary and has
not been reviewed for conformity
with Geological Survey standards
and practices.

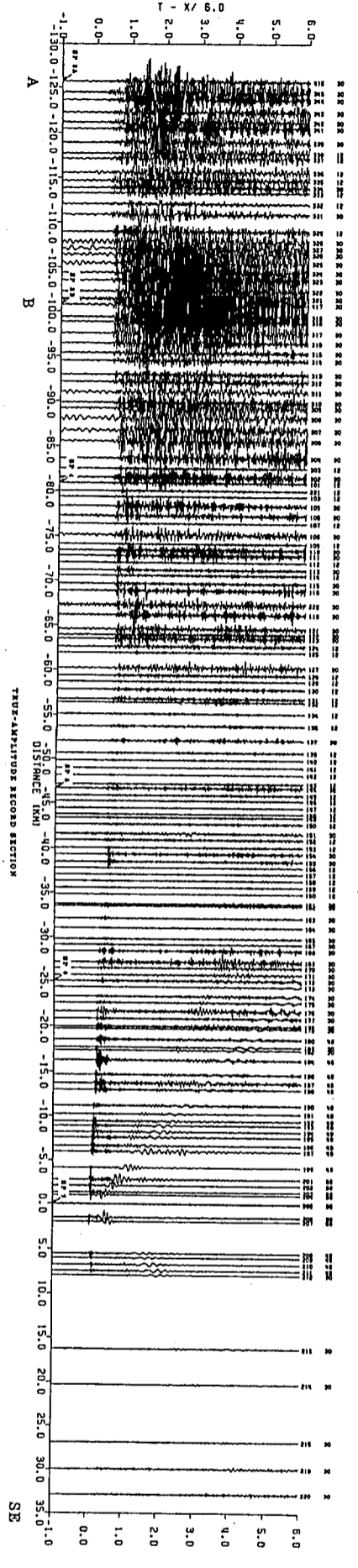
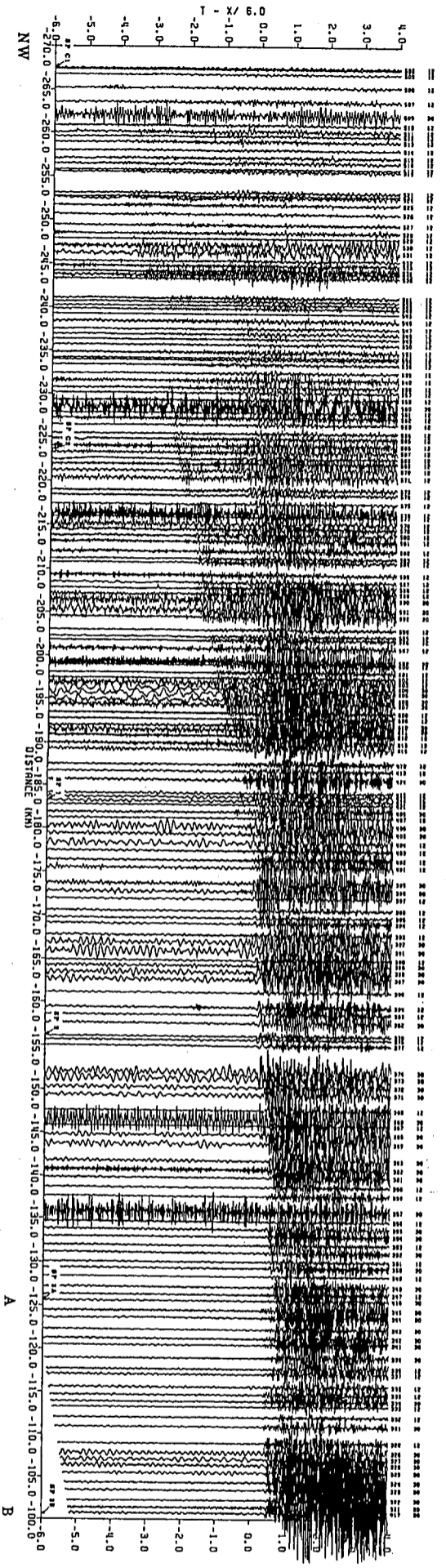


TRUE-AMPLITUDE RECORD SECTION

BLACK LAKE TO DEER ISLE
SHOT POINT 4

by
J.M. Murphy and J.H. Inetgeri
1986

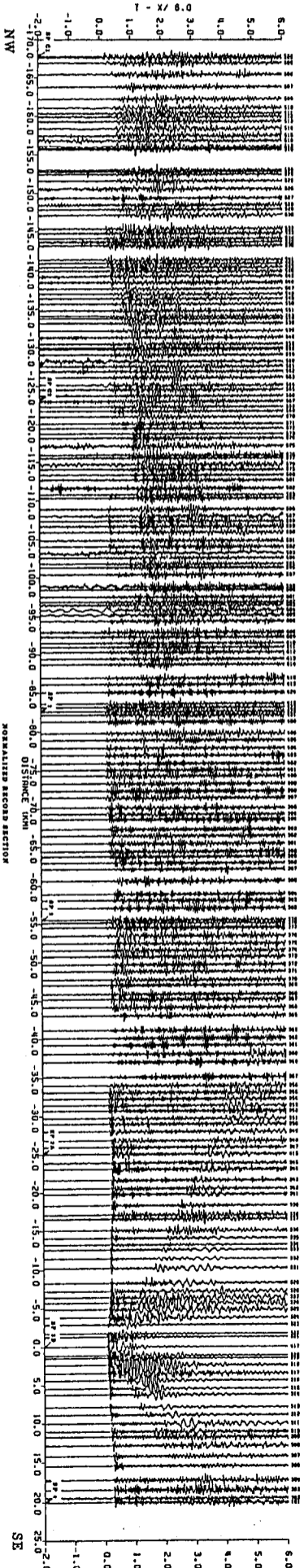
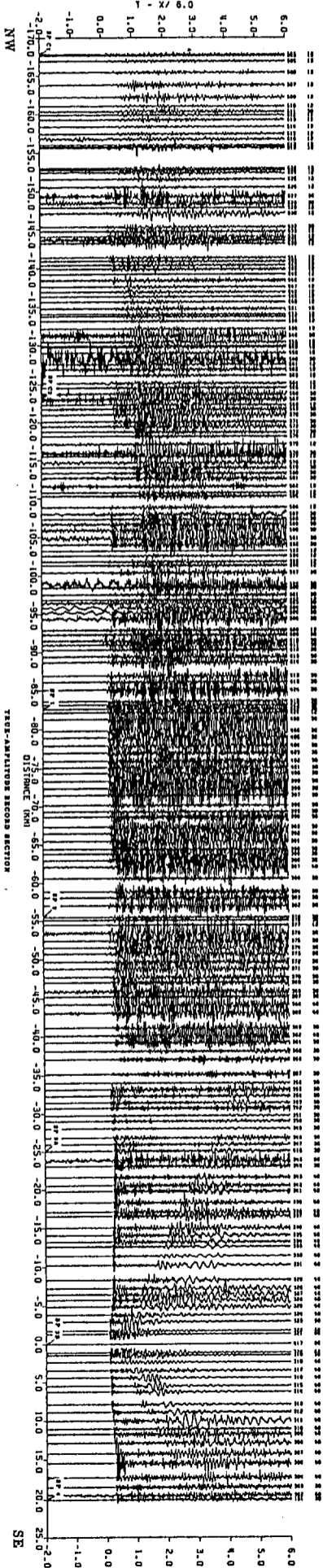
This report is preliminary and has not been reviewed for conformity with U.S. Geological Survey editorial standards.



7803-AAPL1708 RECORD SECTION

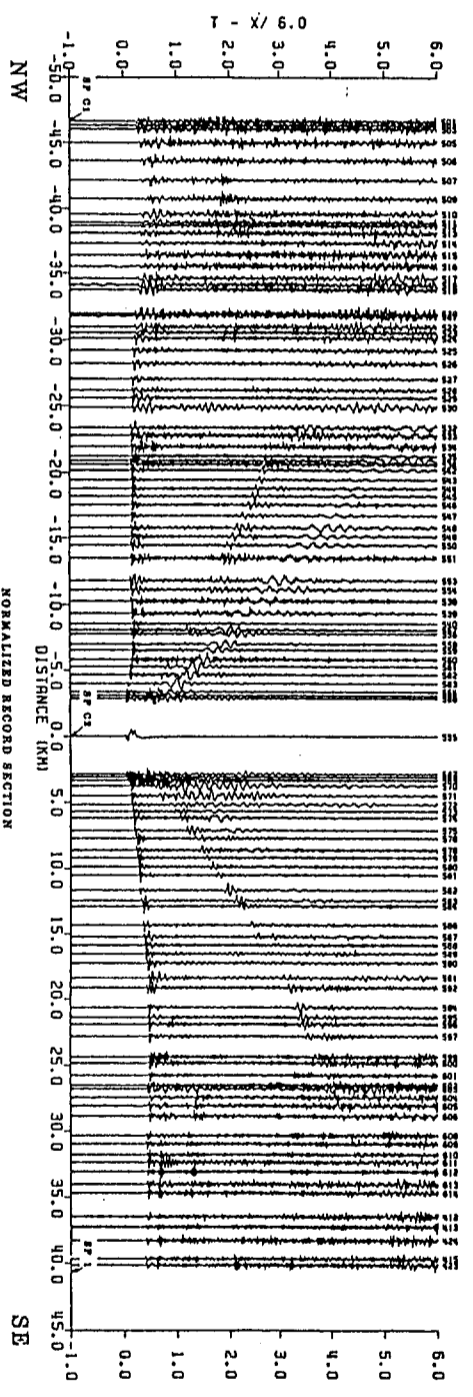
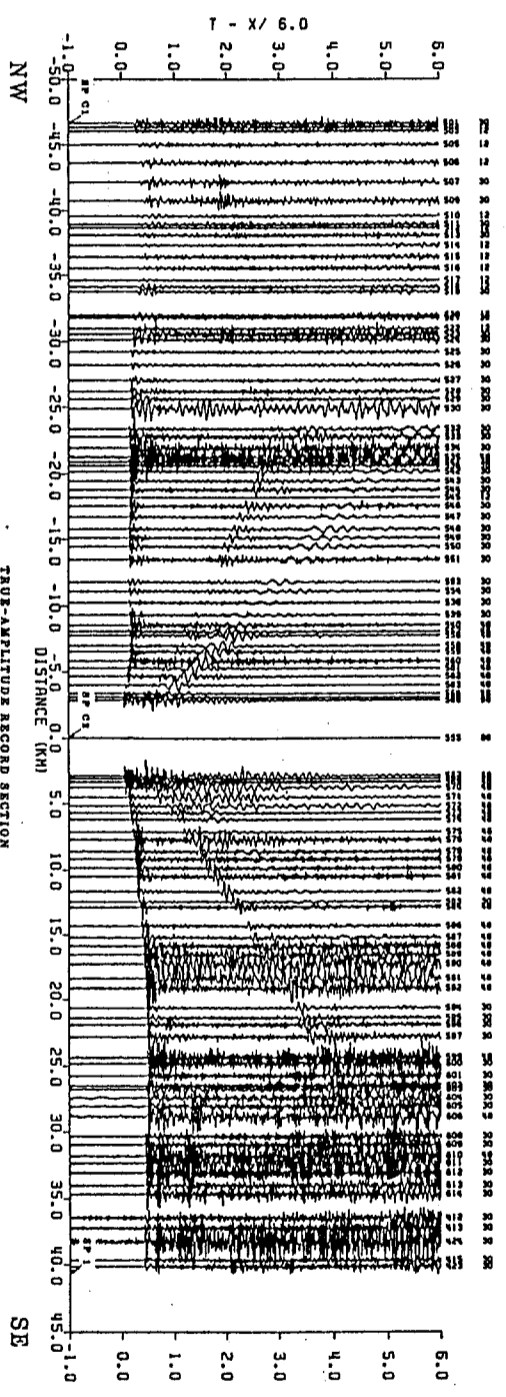
BLACK LAKE TO DEER ISLE
SHOT POINT 7
by
J.M. Murphy and J.H. Luetfert
1986

This report is preliminary and has not been reviewed by the U.S. Geological Survey.



BLACK LAKE TO SKOWHEGAN
SHOT POINT 28
by
J.M. Murphy and J.H. Laster
1986

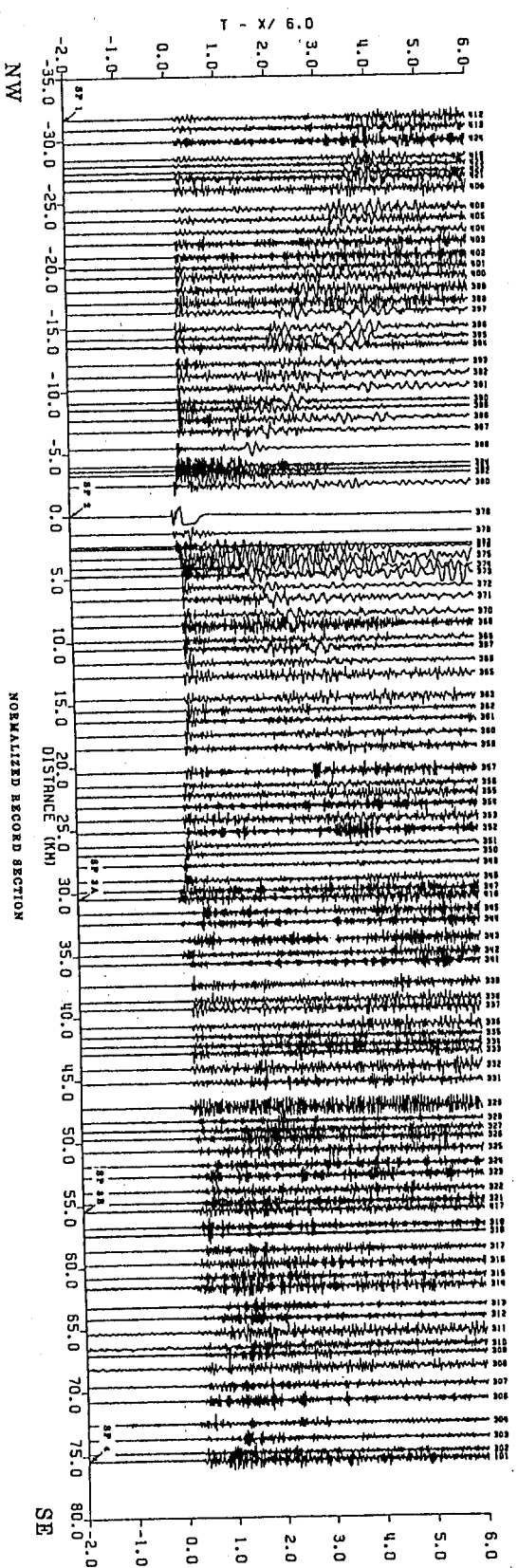
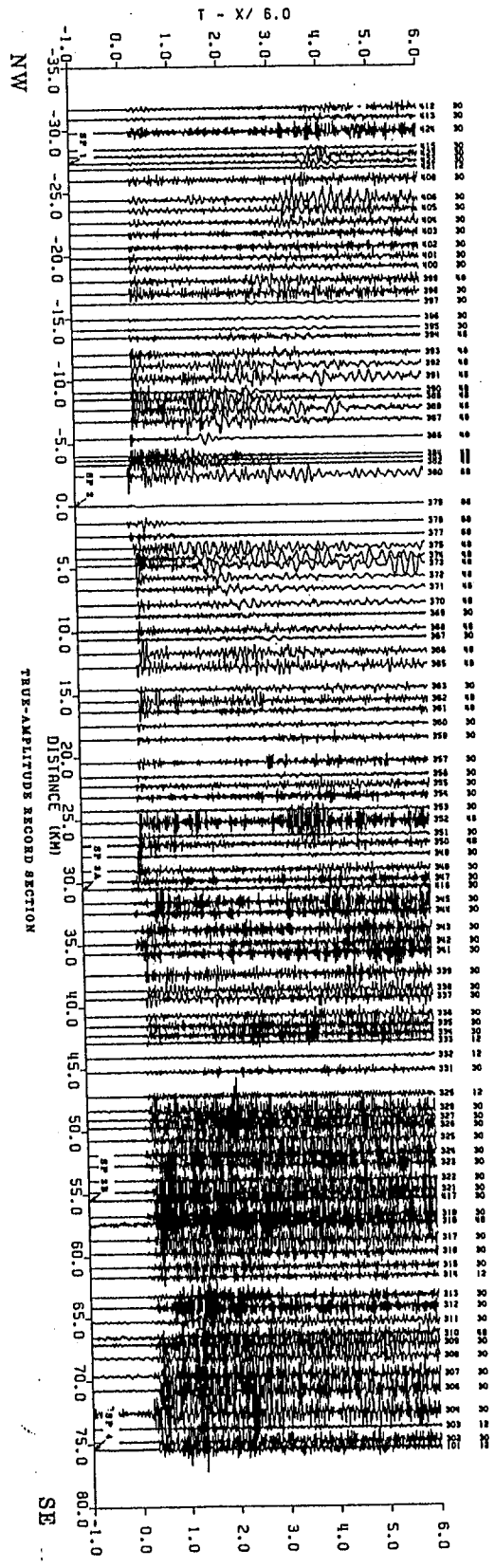
This report is preliminary and has not been reviewed by the U.S. Geological Survey.



BLACK LAKE TO COBURN GORE
SHOT POINT C2

by
J.M. Murphy and J.H. Luetgert
1986

This report is preliminary and has not been reviewed and approved by the U.S. Geological Survey.

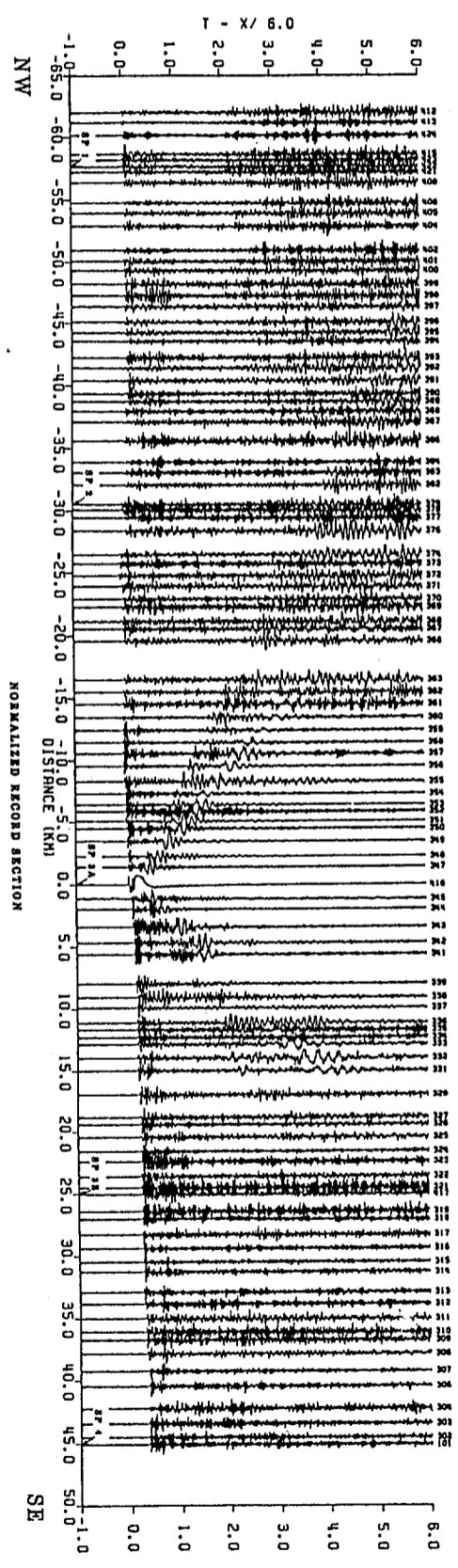
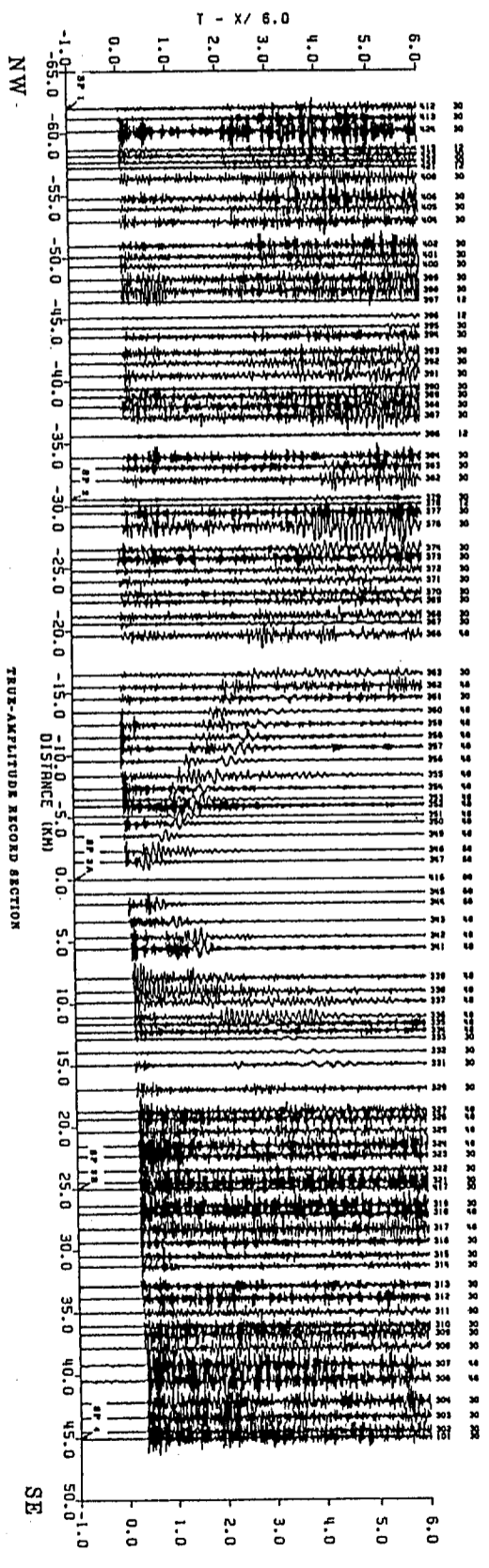


SKOWHEGAN TO THE CANADIAN BORDER
SHOT POINT 2

by
J.M. Murphy and J.H. Inelgert

1986

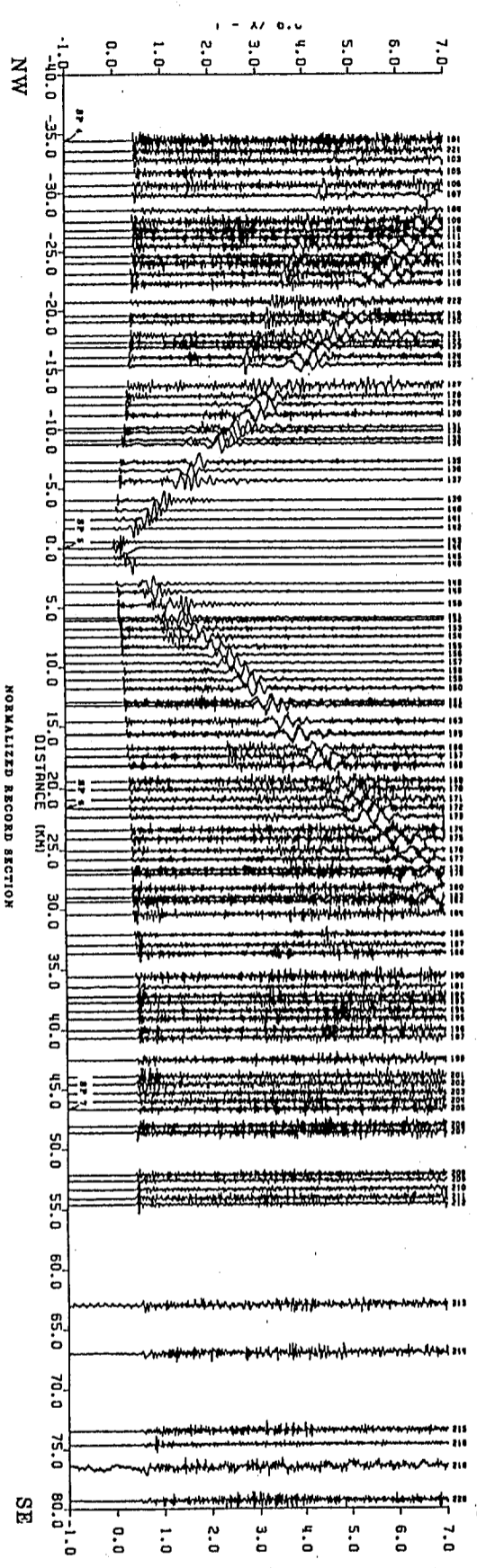
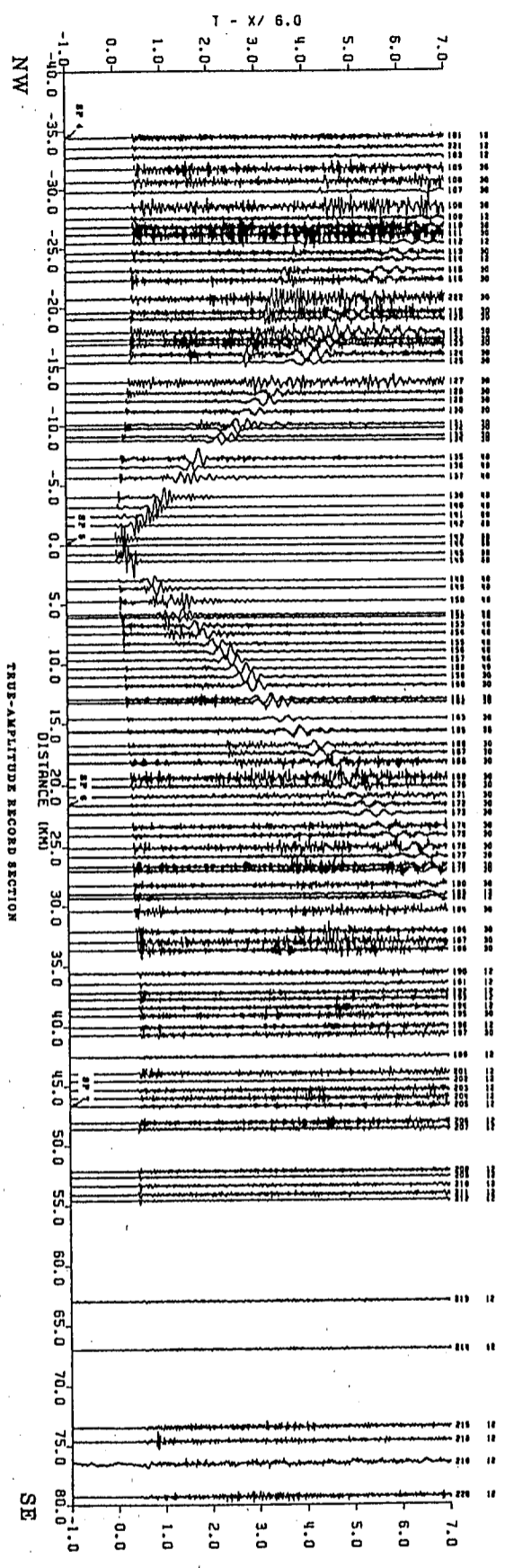
This report is preliminary and the data are subject to revision. The U.S. Geological Survey is not responsible for errors or omissions.



SKOWHEGAN TO THE CANADIAN BORDER
SHOT POINT 3A

by
J.M. Murphy and J.H. Luetfert
1986

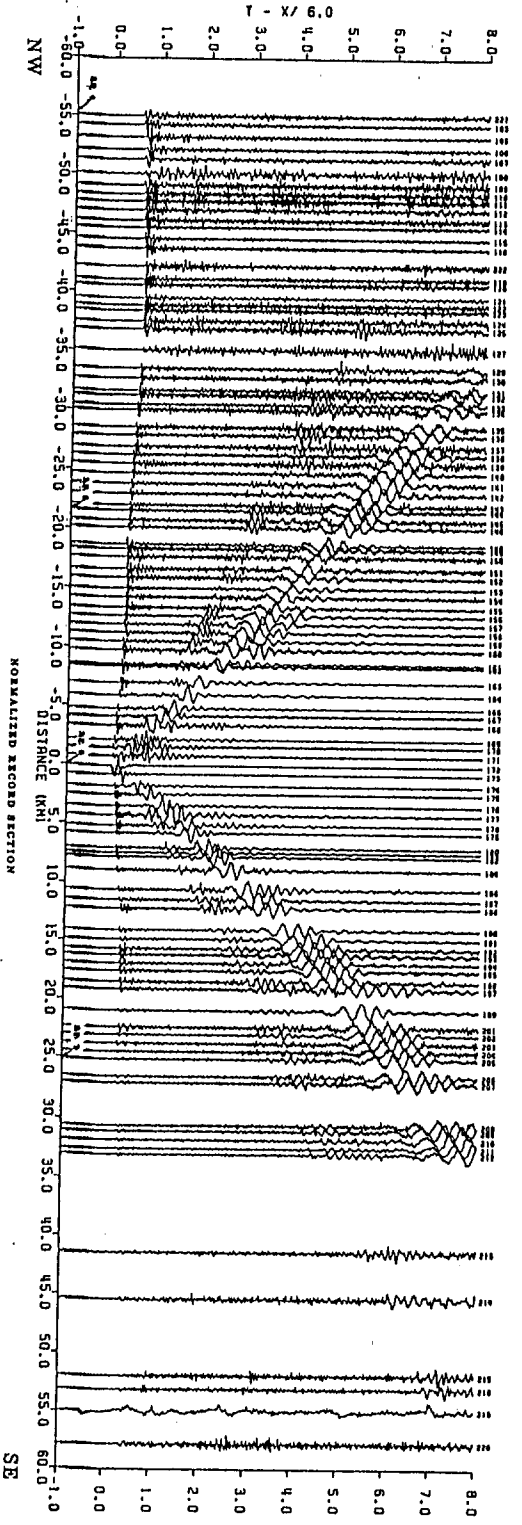
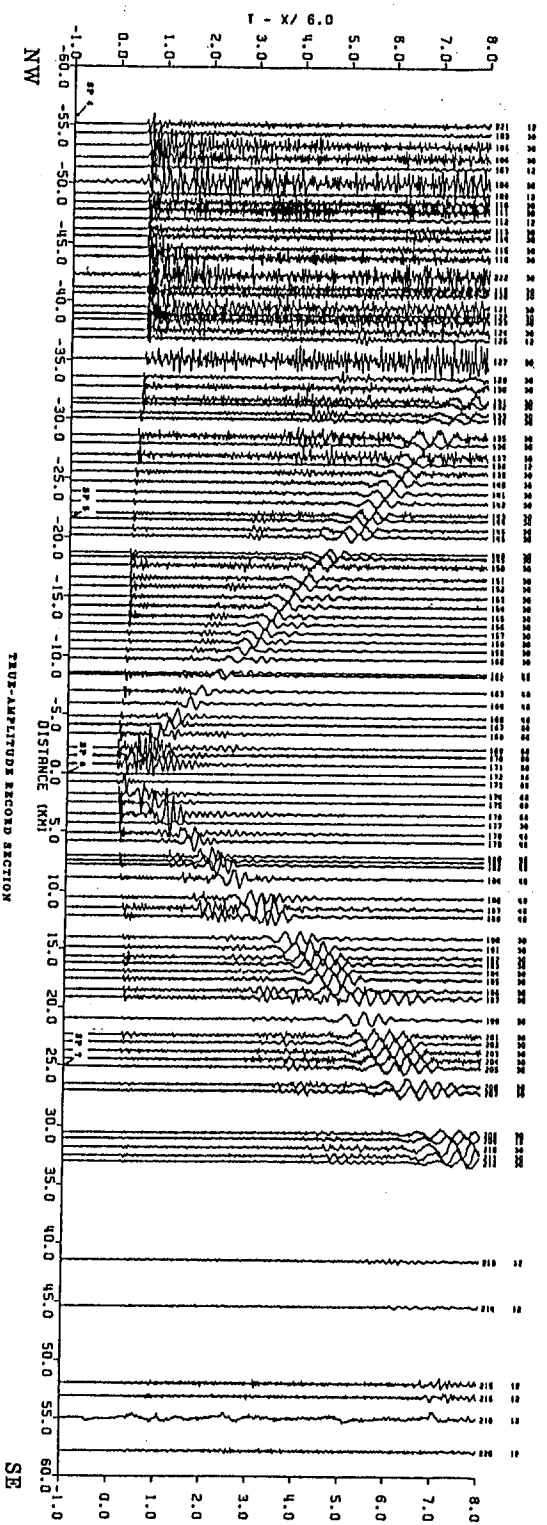
This report is preliminary and has not been reviewed for conformity with U.S. Geological Survey standards.



SKOWHEGAN TO DEER ISLE
SHOT POINT 5

by
J.M. Murphy and J.H. Luefgert
1986

This report is preliminary and has not been reviewed for conformity with U.S. Geological Survey editorial standards.



SKOWHEGAN TO DEER ISLE
 SHOT POINT 6

by
 J.M. Murphy and J.H. Luetgeert
 1986

This report is preliminary and data have been reviewed for consistency with U.S. Geological Survey standards.