

Arroyo seismic project

Michael Fort, New Mexico Institute of Mining and Technology

This project was a teaching exercise with the objective of profiling a buried stream channel. A single line was shot on 4/22/16 using two 24 channel Geodes and 48 L40 geophones. The origin of the line was at Lat 34.072811° Long -106.915817° with a heading of 311 degrees and with geophones at 1 meter intervals starting at the origin. The source for the shots was a sledge hammer striking a steel plate.

Table 1 lists the shot locations and the associated file numbers. Figure 1 shows a tomographic inversion of the data.

Table 1. Shot locations and file numbers.

Shot location (m)	File number
-9	1
0	2
3	3
6	4
9	5
12	6
15	8
18	9
21	10
24	11
27	12
30	13
33	14
36	15
39	16
42	17
45	18
47	19
56	20

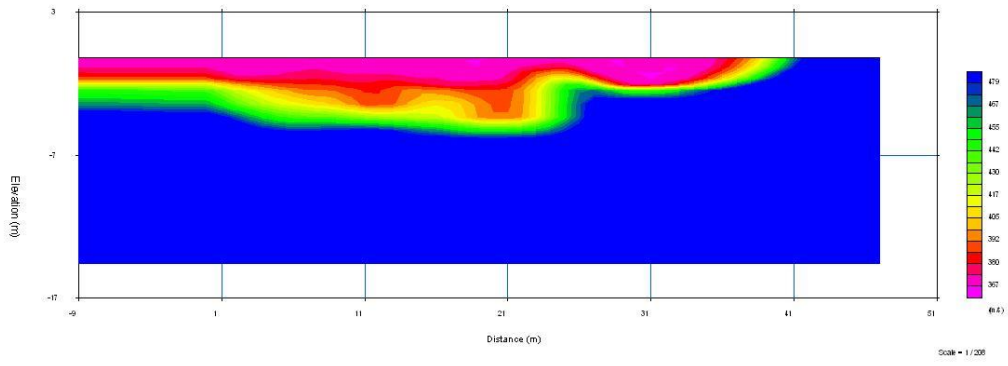


Figure 1. Tomographic inversion