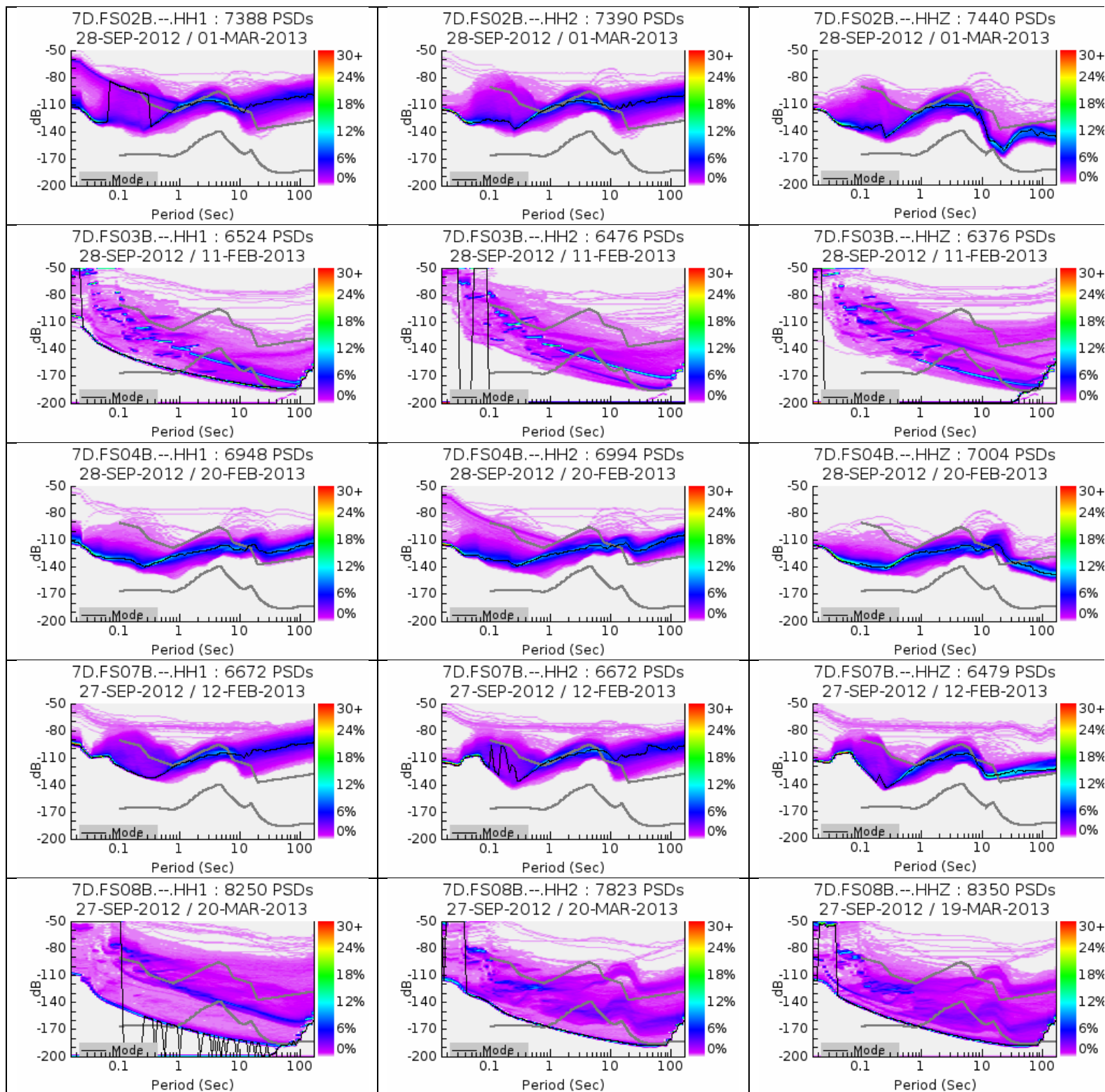
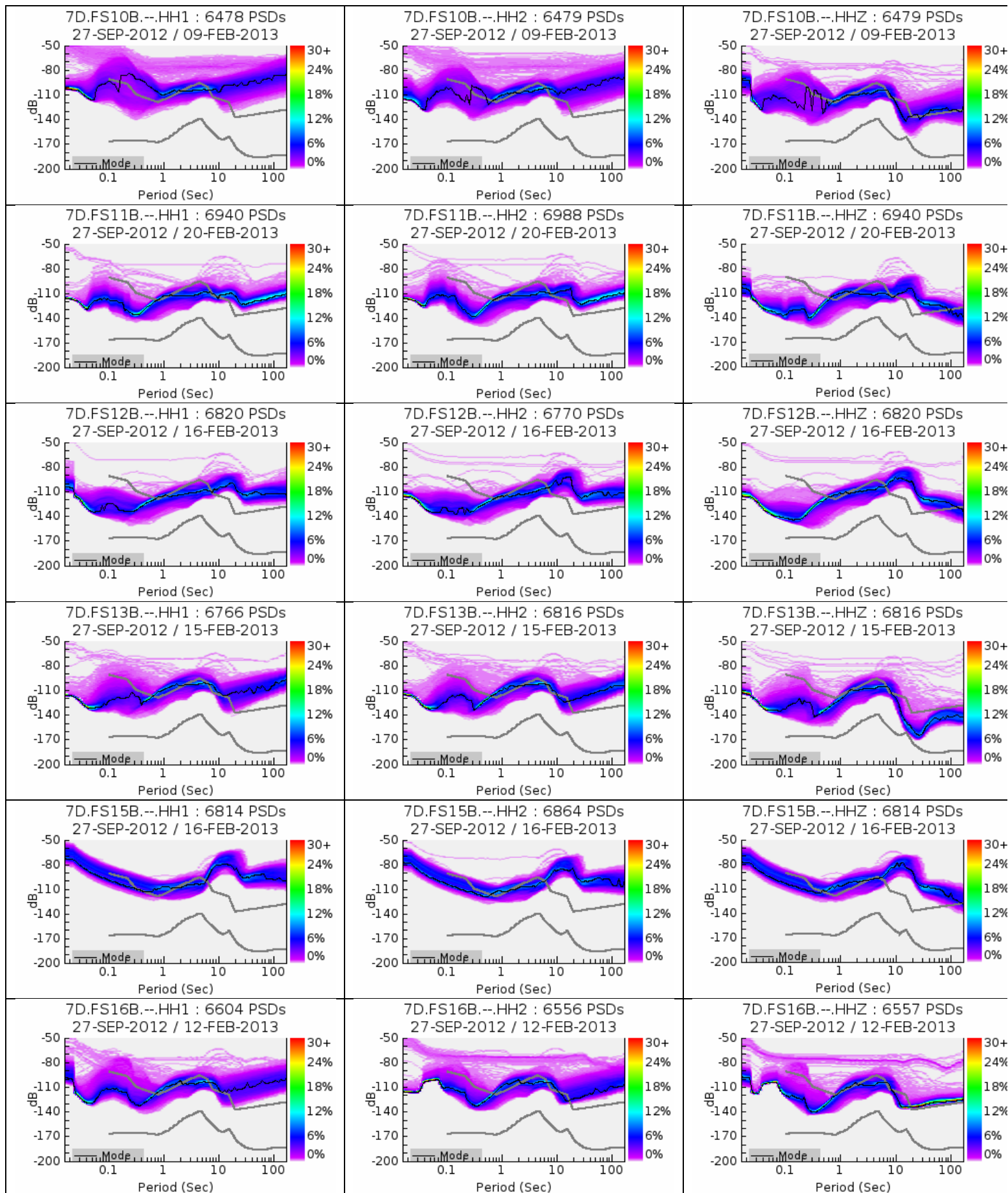
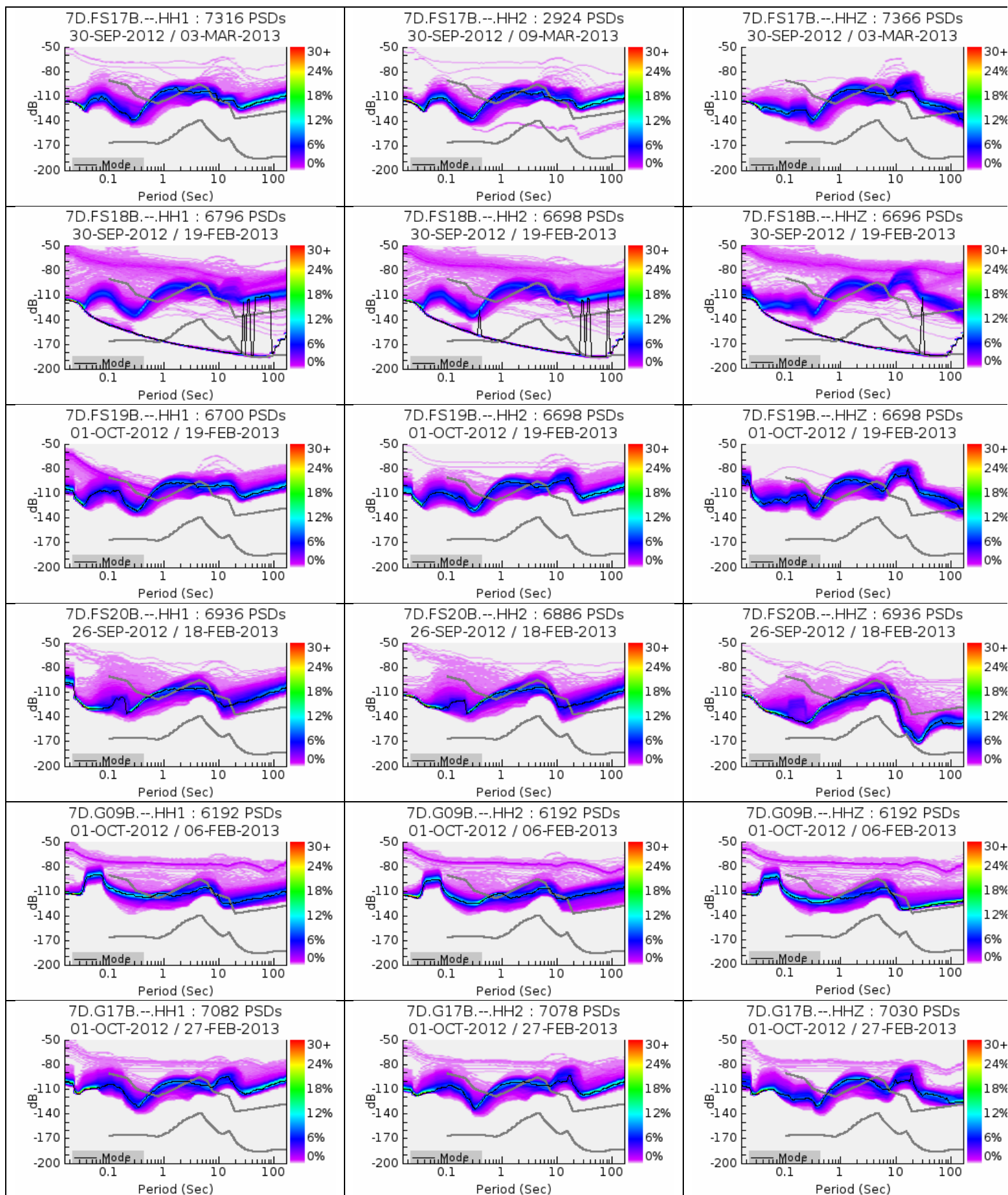


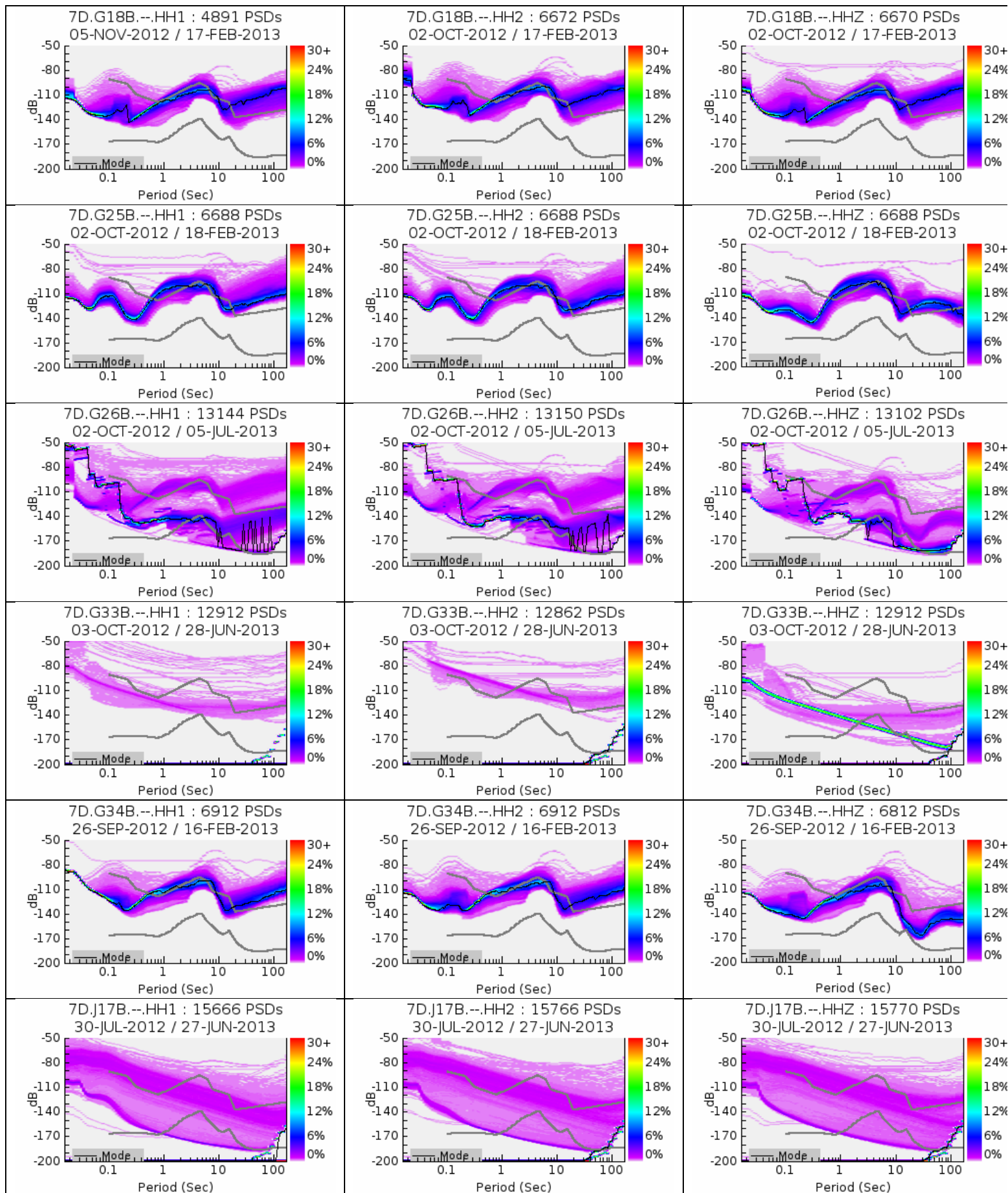
Appendix C (LDEO): Probability density function plots of power spectral density calculations for Year 2 LDEO stations. Each row represents two unoriented horizontal channels and one vertical channel for each seismometer. To eliminate noise from the initial settling of the instrument following emplacement, the plots only include data recorded after the first two weeks of deployment. Due to a battery problem, many of the LDEO stations did not record data for the full deployment. The time range of the probability density function only shows the time when stations were recording data normally.

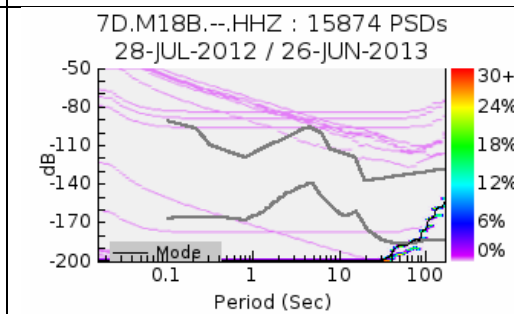
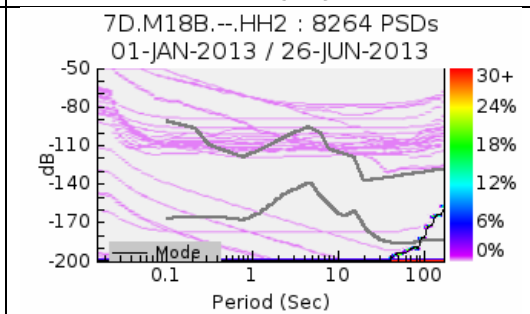
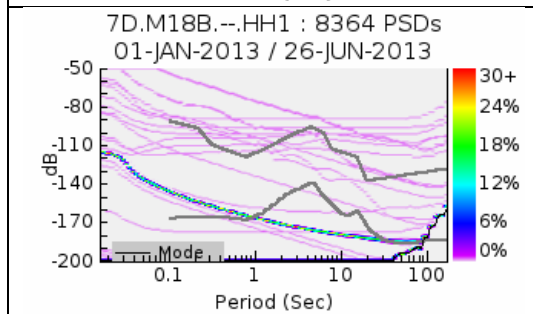
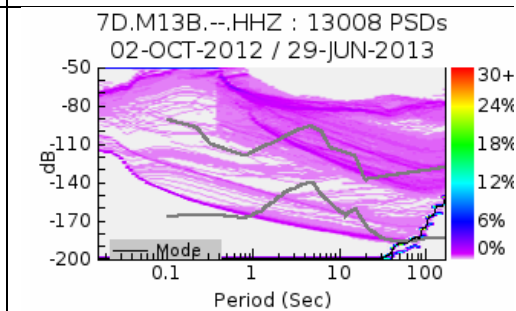
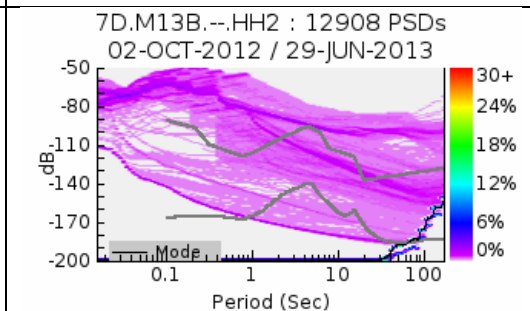
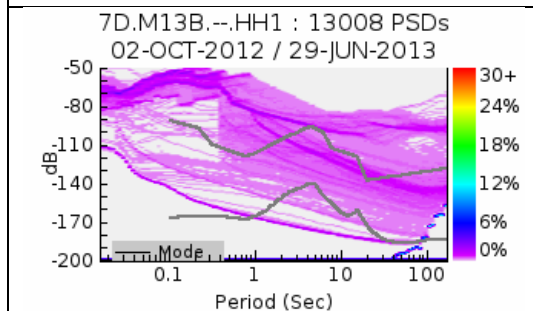
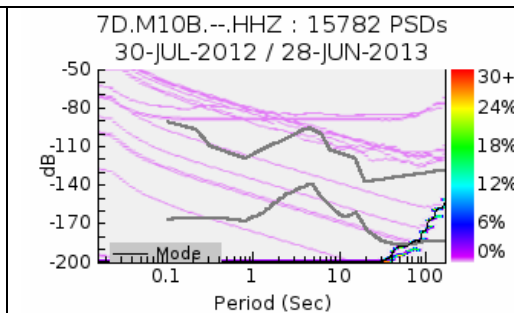
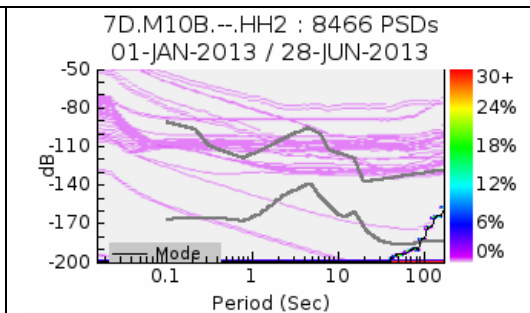
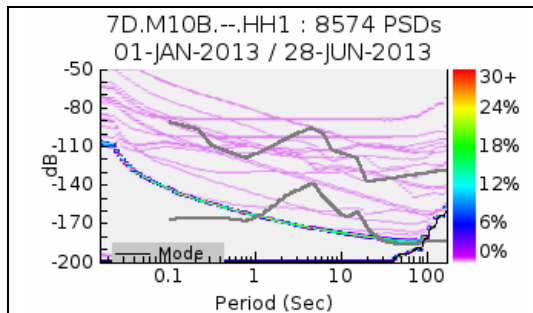




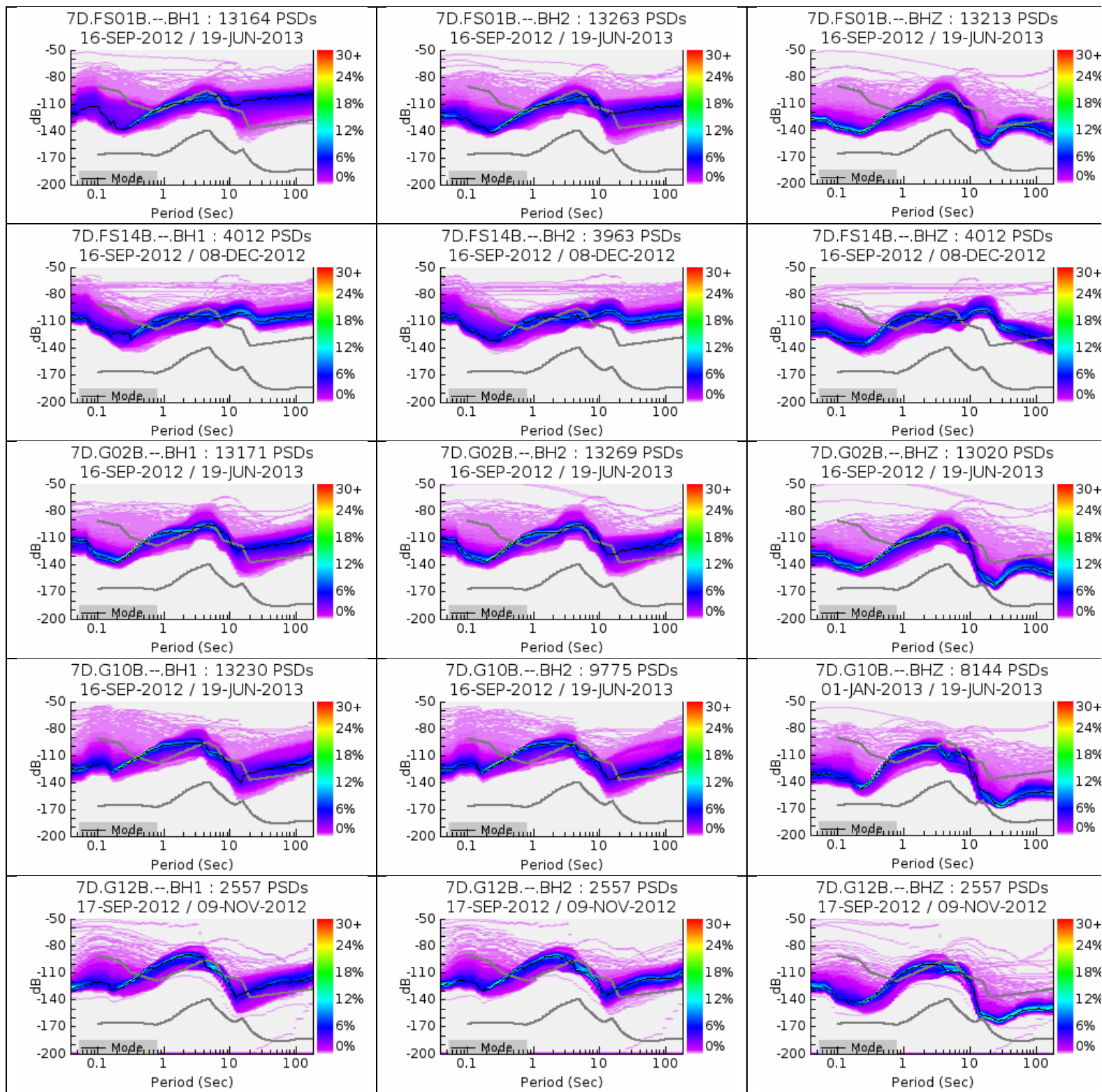




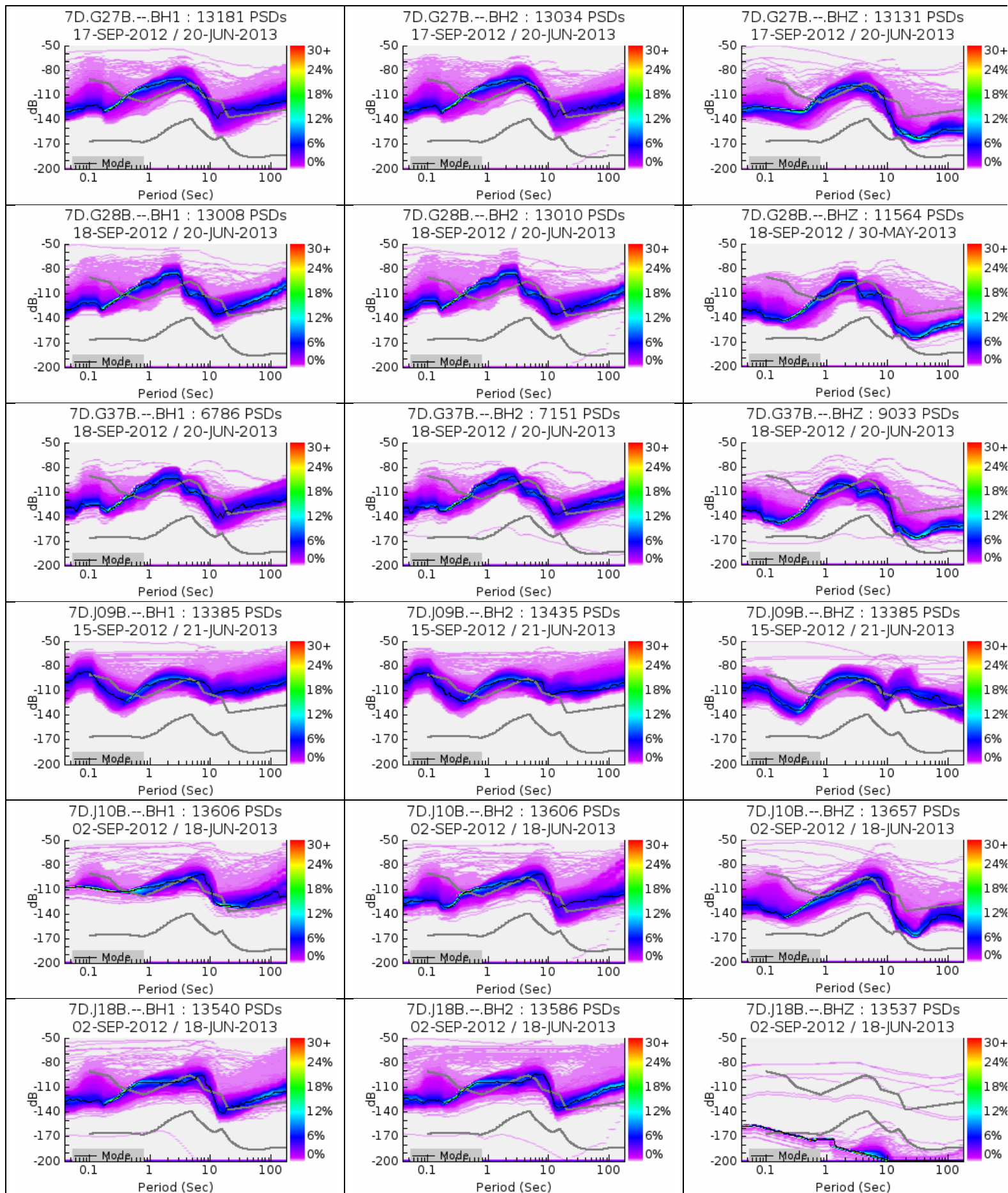


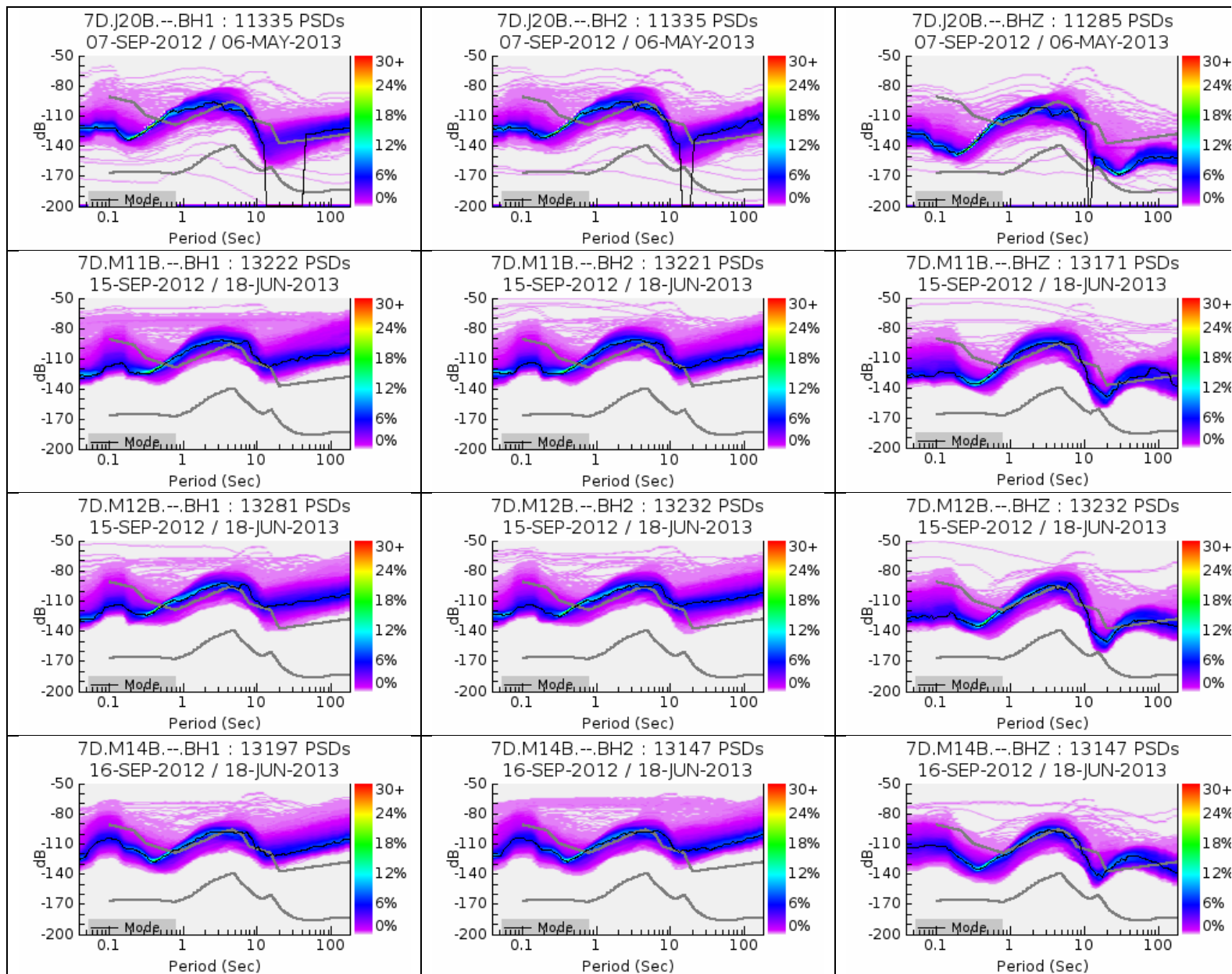


Appendix C (SIO): Probability density function plots of power spectral density calculations for Year 2 SIO stations. Each row represents two unoriented horizontal channels and one vertical channel for each seismometer. To eliminate noise from the initial settling of the instrument following emplacement, the plots only include data recorded after each instrument has been deployed for two weeks.











Appendix C (WHOI): Probability density function plots of power spectral density calculations for Year 2 WHOI stations. Each row represents two unoriented horizontal channels and one vertical channel for each seismometer. To eliminate noise from the initial settling of the instrument following emplacement, the plots only include data after the instrument has been deployed for two weeks.

