



TO
A

~~Robin Hayman~~

Jack *JH*
Fede
Frank
&
return

FROM
DE

Bill Shannon

SECURITY - CLASSIFICATION - DE SÉCURITÉ
OUR FILE - N / RÉFÉRENCE 6235-GAC
YOUR FILE - N / RÉFÉRENCE
DATE Dec 10/82

SUBJECT
OBJET

GAC LP response

I'm attached a GAC LP plot of background noise using a constant scale factor for all three components. As you can see the GAC LPN amplitudes are much larger than the others (at least by a factor of 2). The same situation exists with the GAC SPN though it isn't usually noticed as much since the GAC SP components are normally plotted using auto-scaling. Since we are supplying continuous GAC LP data to Albuquerque with a 1980 calibration curve that may not be applicable, perhaps a rethinking of GAC sensitivity and a recalibration should be planned as soon as possible.

cc P. Bosham

GAC LONG-PERIOD DATA: FILENAME
PLOT START DATE/TIME 2/341
SCALE FACTORS FOR GACZ, GACN, GACE

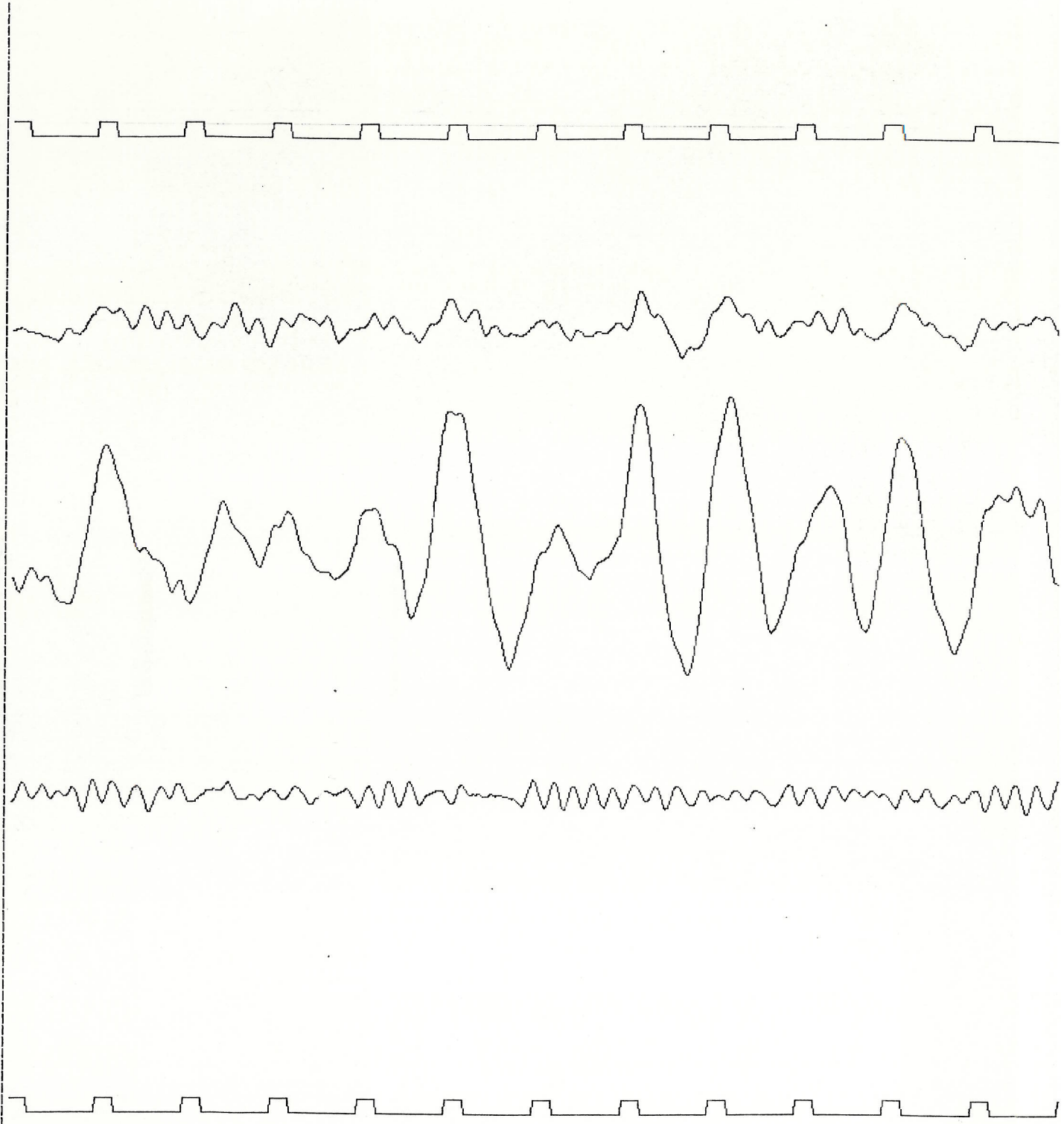
13: 4: 2

0.300 0.300 0.300

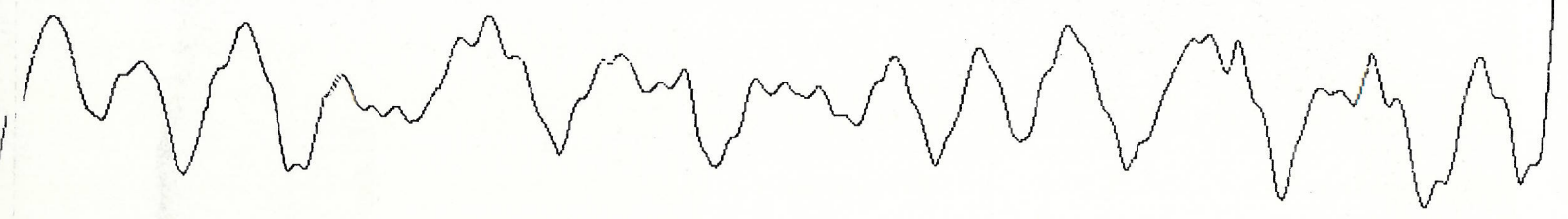
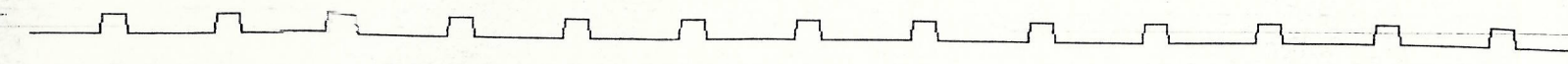
GACE

GACN

GACZ

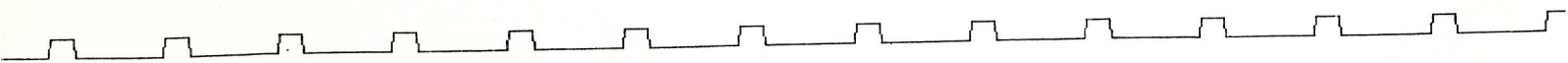
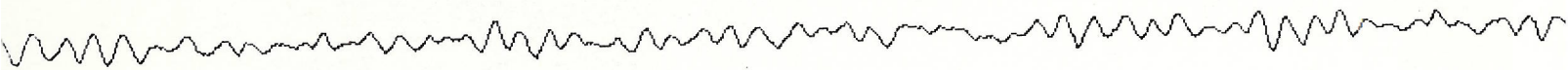
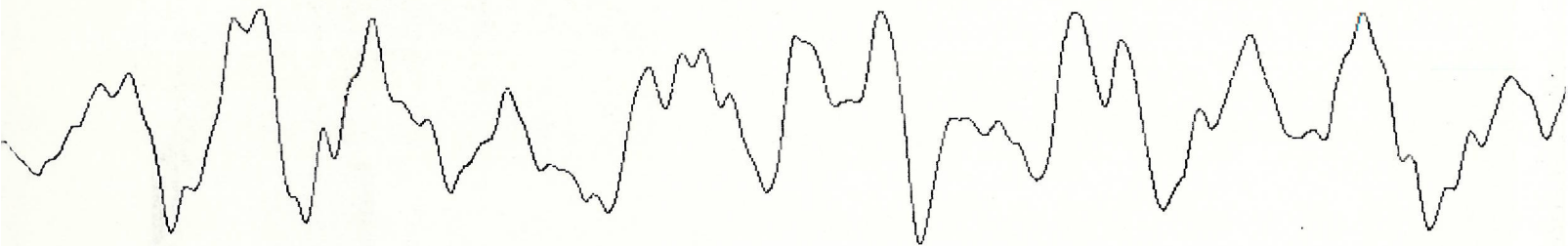
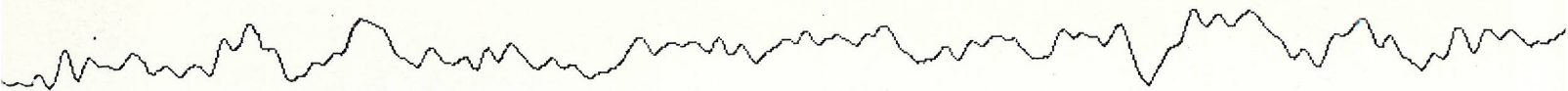
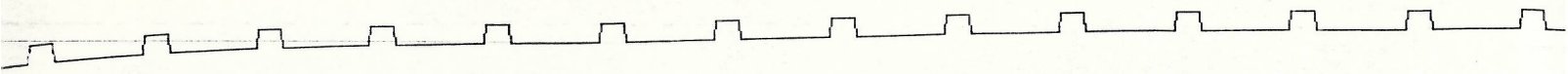


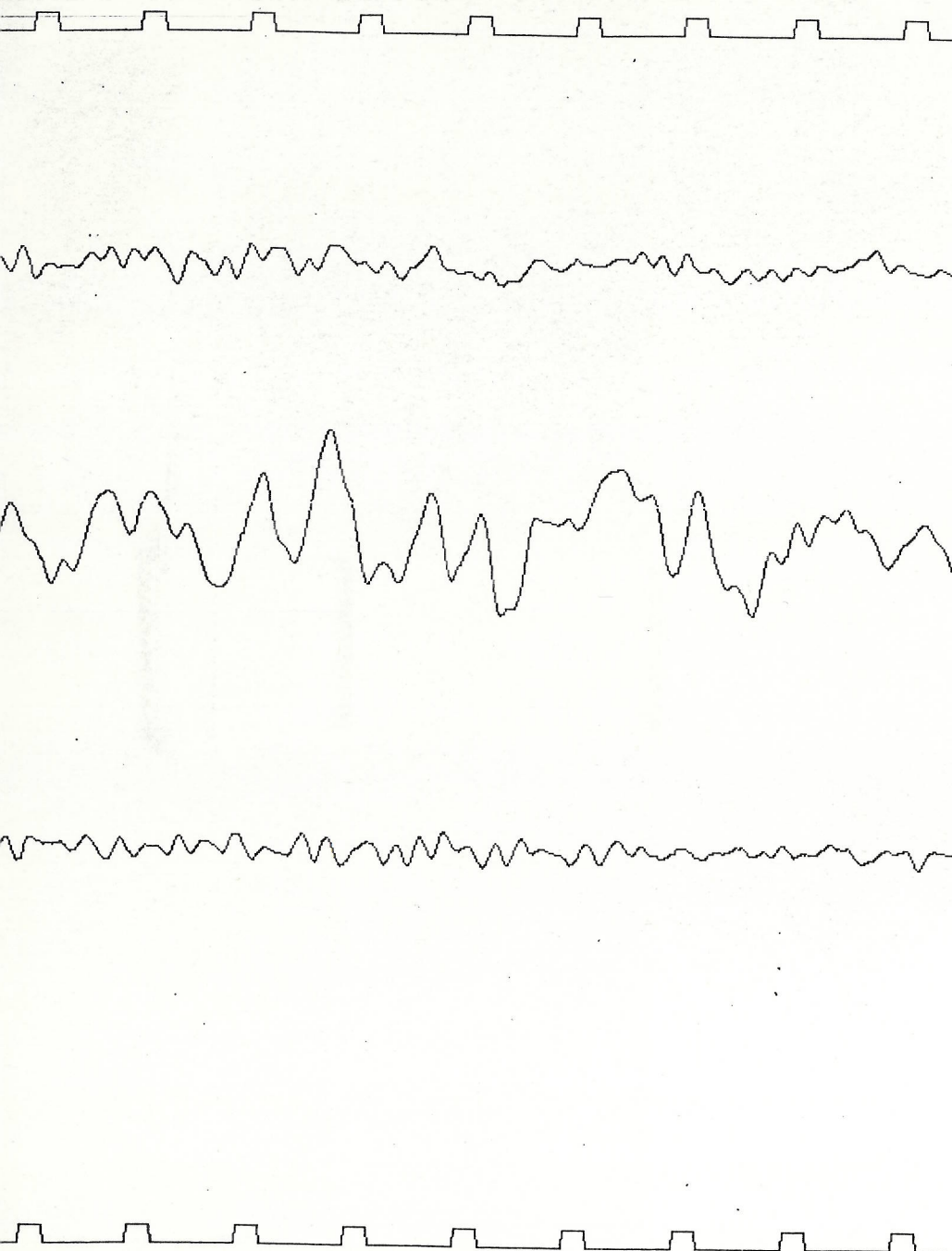
2/341 13:04:02



28

898





MAXIMUM SAMPLE VALUES FOR GACLpz, GACLpNS, GACLPEW PLUS TIME OF OCCURENCE DURING PLOT TIME

216.	2./341.	13.:26.: 2.	+ 198.	SEC.
664.	2./341.	13.:26.: 2.	+ 222.	SEC.
215.	2./341.	13.: 9.:32.	+ 101.	SEC.