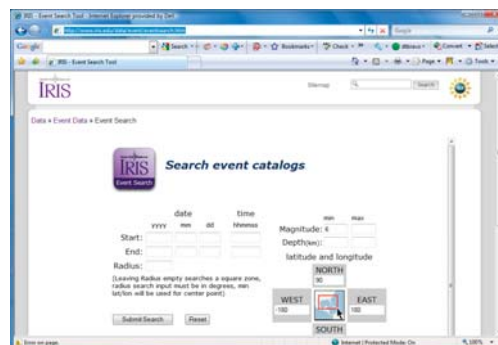


Searching the IRIS Earthquake Database

The IRIS event search is very similar to the NEIC event search. However, IRIS also provides a geographical location in addition to the latitude and longitude.

- Launch your browser and go to:
<http://www.iris.edu/data/event/eventsearch.htm>
- Enter a date range in the search form.
- This site does not require all fields to be filled in.
- Click on **Submit Search**



Site Output

When the search is complete, you will see a table of data in your browser window.

TIME	LAT	LON	DEP	MAG	TYPE	CATALOG	REGION
2001/01/26 03:16:40.5000	23.419	70.232	16	8.0	MS	MHDF	INDIA

Month

Latitude

Depth

Magnitude

Day

Origin Time

Longitude

Magnitude Type