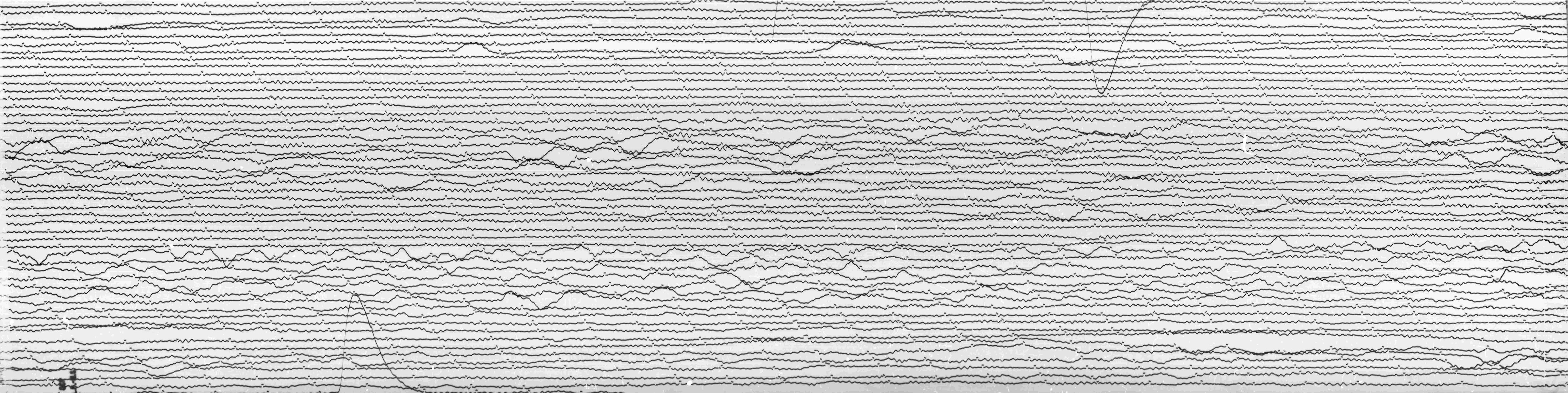


1966

STATION *Scp* COMP *LPN* MAG *1500* CAL CUR *1966* *0.08* N/A
DATE ON *3-4-66* TIME ON *1704* CORR *-170/0* MS @ *1656* GMT
DATE OFF *3-5-66* TIME OFF *1826* CORR *-180/0* MS @ *1820* GMT
To *14.7g 99.8* Remarks:

GRND. POT. *N*



1966