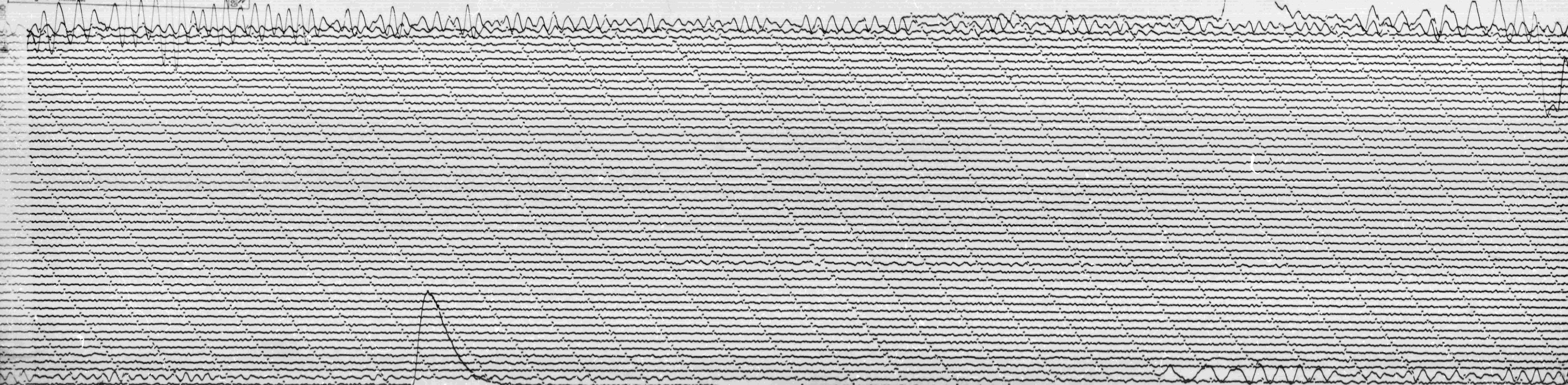


STATION *CTA* COMP *N* MAG *3000* CAL CUR *10* G *0.86* N/A
DATE ON *3-5-66* TIME ON *0005* CORR *005-10* MS @ *0030* GMT
DATE OFF *3-6-66* TIME OFF *0002* CORR *005-10* MS @ *0030* GMT
To *15* g/yr Remarks:

SPND MOT. ↑
N



MAR 6 1966