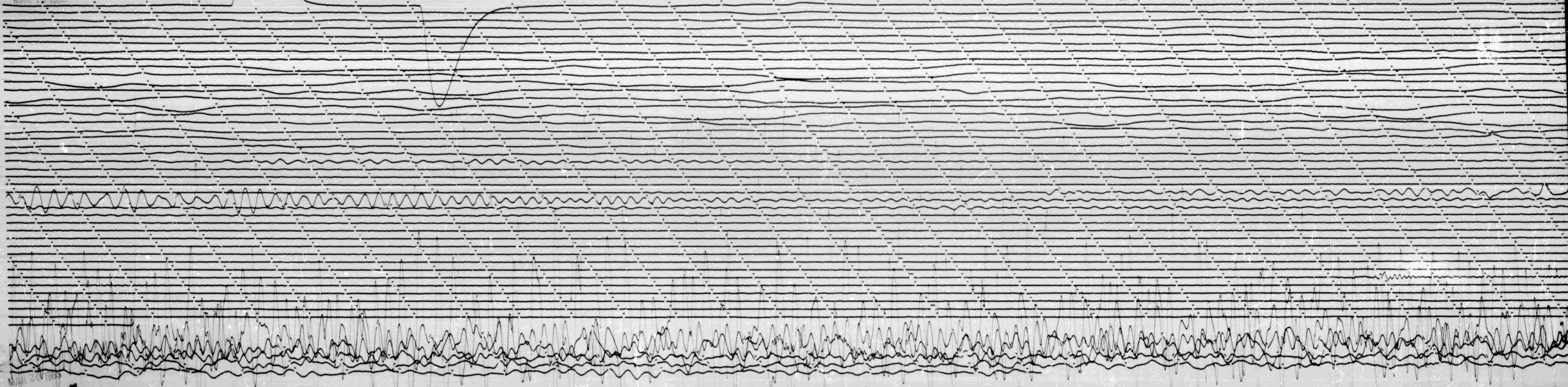


STATION *NRI* COMP *E* MAG *1300* CAL. CURIC. *2.065.092* N/A  
DATE ON *3-19-66* TIME ON *0508* CORR. *0* MS @ *0500* GMT  
DATE OFF *3-20-66* TIME OFF *0501* CORR. *+40/0* MS @ *0500* GMT  
To *15* Tg *100* Remarks:

GRID MOT. ↑  
↓  
←  
→

MAR 19 1966



MAR 20 1966