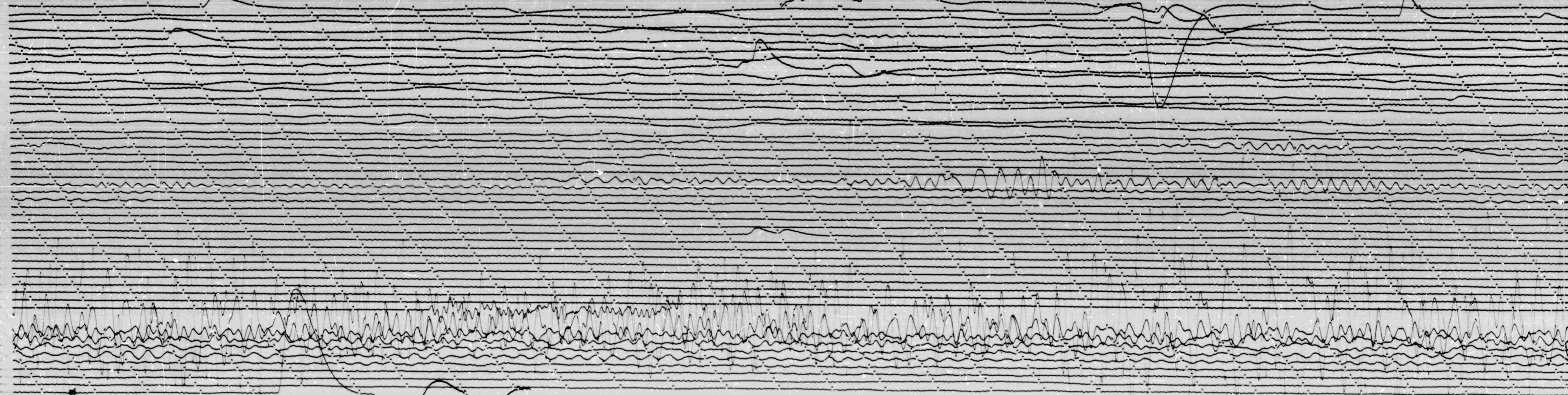


MAR 19 1966

STATION *1212* COMP *E* MAG *2500* CAL CUR *0.2 G* *0.032* N/A
DATE ON *4-17* TIME ON *0629* CORR *-0.17* MS @ *4800* GMT
DATE OFF *3-20* TIME OFF *0719* CORR *0.11* MS @ *4700* GMT
To *15* To *190* Remarks



MAR 20 1966

1-1