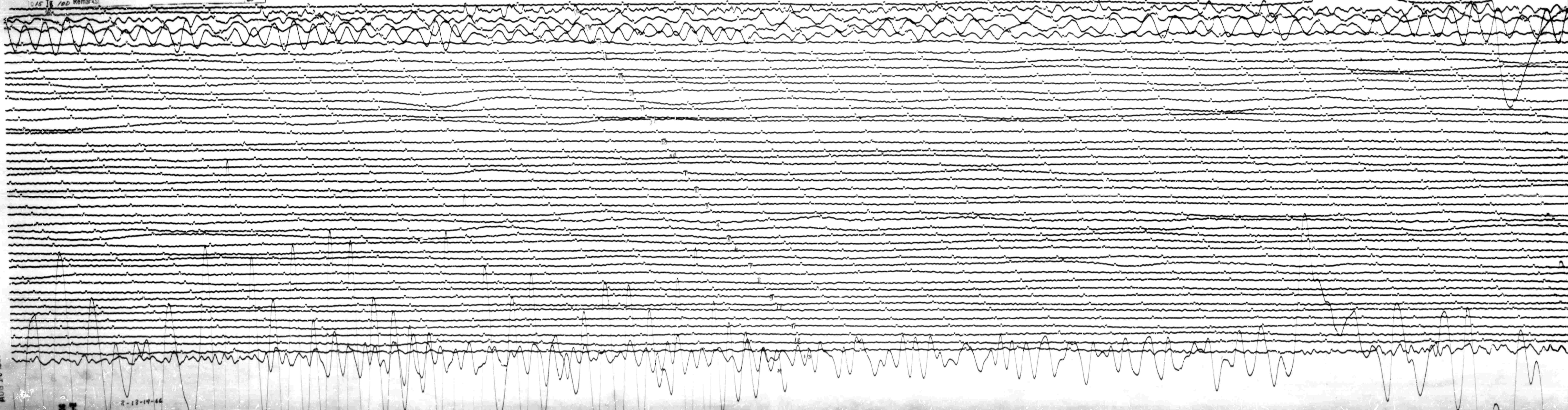


AUG 18 1966

STATION 526 COMP MAG 3.000 CAL CUR 2.10 G 0.100 N/A
DATE ON 8-18-66 TIME ON 14 20 CORR -0.37 / 0. MS @ 13.92 GMT
DATE OFF 8-19-66 TIME OFF 13 29 CORR +0.23 / 0. MS @ 13.28 GMT
0.45 Tg 100 Remarks:

COND MOT. ↑



AUG 19 1966

8-18-66