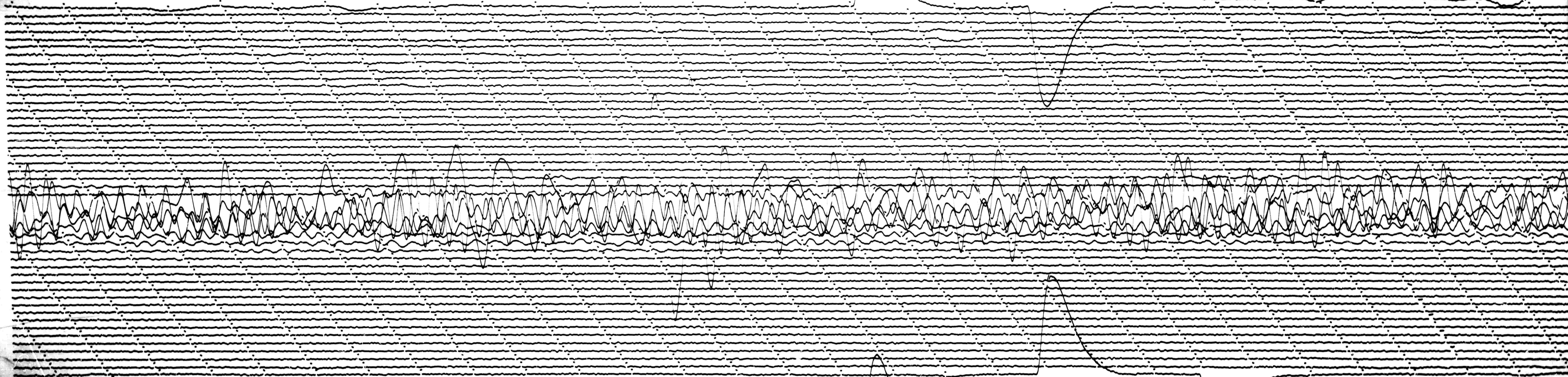


AUG 19 1966



AUG 20 1966

STATION *P10* COMP *NS* MAG *3.000* CAL CUR *0.7* *0.101* N/A
 DATE *ON Aug 19/66* TIME *ON 0030* CORR *-70 / 0* *0530*
 DATE *OF Aug 20/66* TIME *OFF 0035* CORR *-110 / 0* *0520*
 To 5 18/00 Remarks:

↑
 ↓
 N

18

24