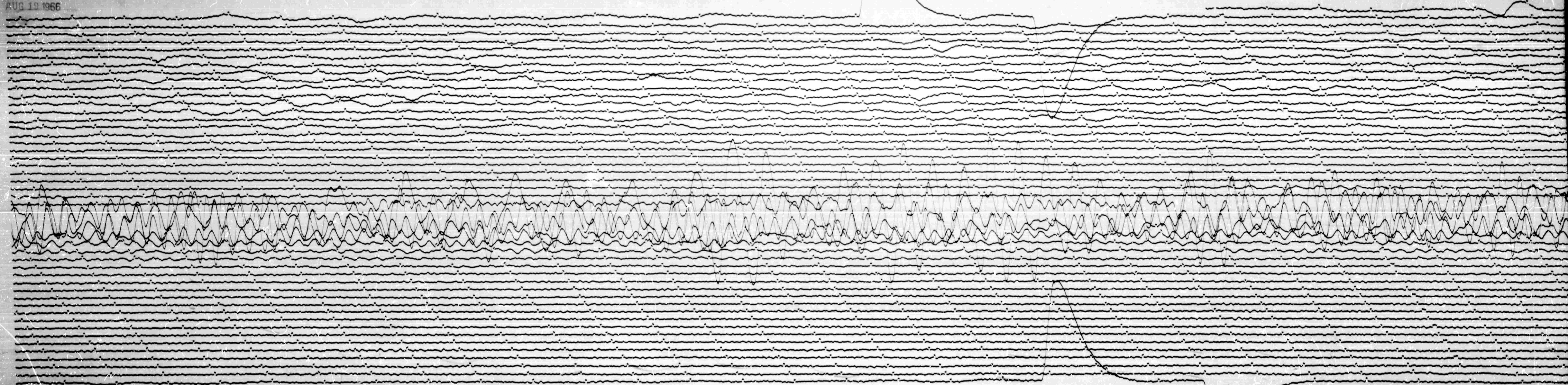


194

AUG 19 1966



AUG 20 1966

STATION *PHO* COMP *RW* MAG *3.000* CAL CUR *0.1* *0.099* N/A
 DATE ON *Aug 1966* TIME ON *0030* CORR *-40* / *0* MS *0530* GMT
 DATE OF *Aug 1966* TIME OF *0035* CORR *-110* / *0* MS *0520* GMT
 To *15* 1800 Remarks:

18

24