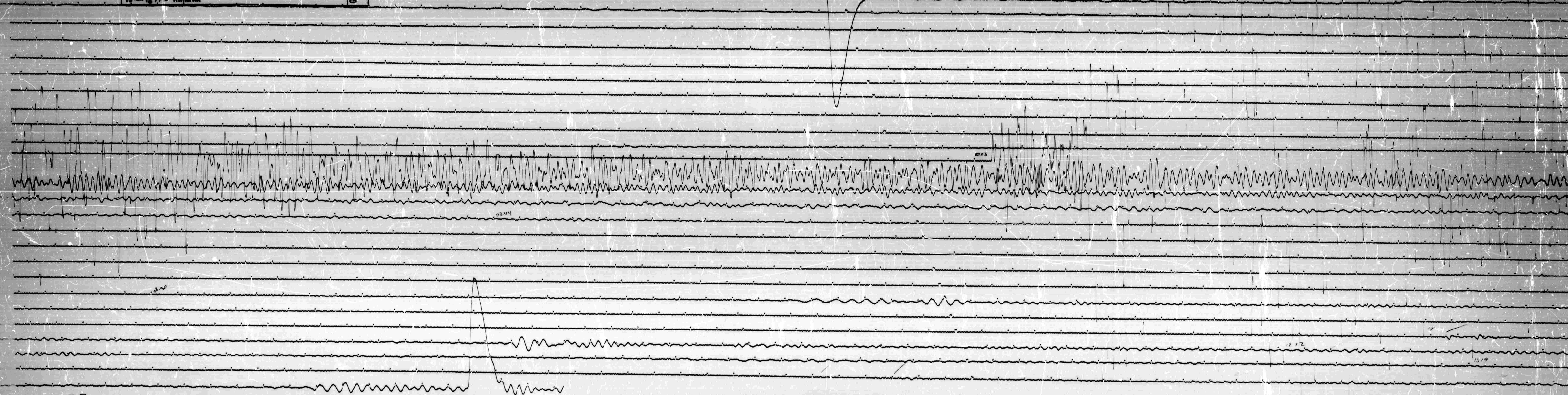


JUL 29 1967

STATION QVI COMP 2 MAG 1500 CAL CUR 0.20 G Q10 N/A
 DATE ON 7-29-67 TIME ON 13:54 CORR -5/0 MS @ 13.30 GMT
 DATE OFF 7-20-67 TIME OFF 14:44 CORR +55/0 MS @ 14.33 GMT
 To 1507g 99 2 Remarks:

COND. NOT. ↑
 14



JUL 30 1967

3-3