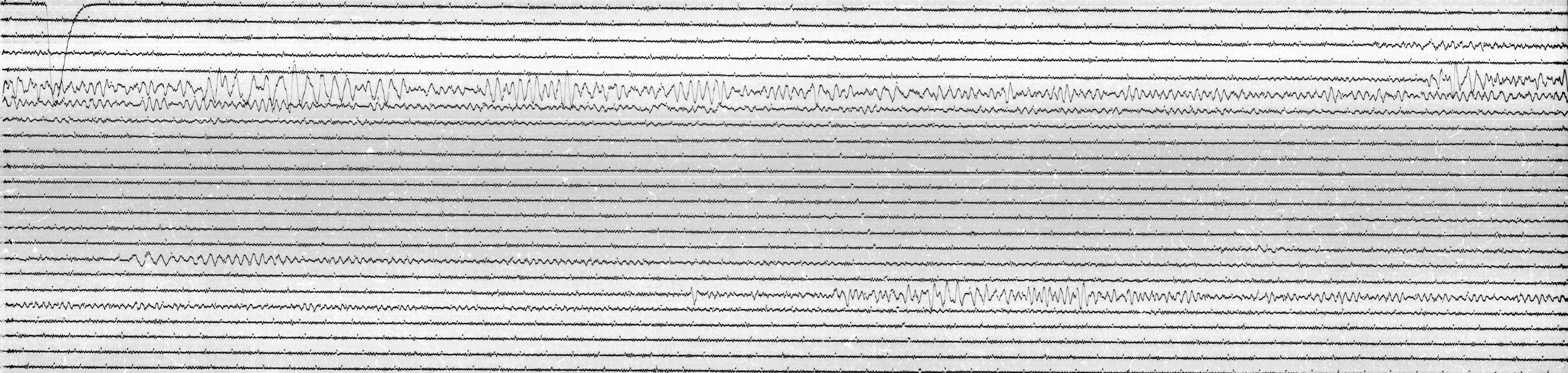


STATION KIP COMP N-S MAG 1500 CAL CUR. 2 G. 0.097 N/A  
DATE 7-29-67 TIME 1922 -30 0 194 GMT  
DATE 7-30-67 TIME 1927 +20 0 1924 GMT  
15 100 Rotations

GRND. INOT. ↑  
N

1967



JUL 30 1967