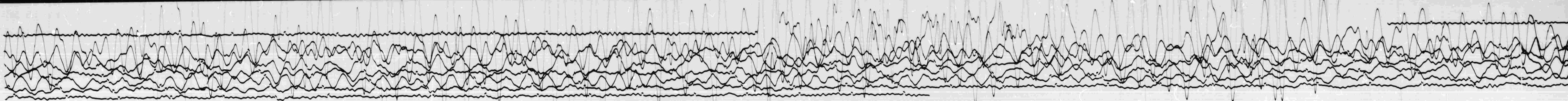


FEB 9 1967



STATION SP2 COMP LPA MAG 1,500 CAL CUR 105 G. 0273N/A
DATE ON 7 FEB 1967 15 11 CORR + 1500 0 15 @ 17.1230MT
DATE OFF 7 FEB 1967 15 11 CORR - 300 0 15 @ 17.1230MT
To 15 0g 100 Remarks: GRID MOT.

FEB 9 1967