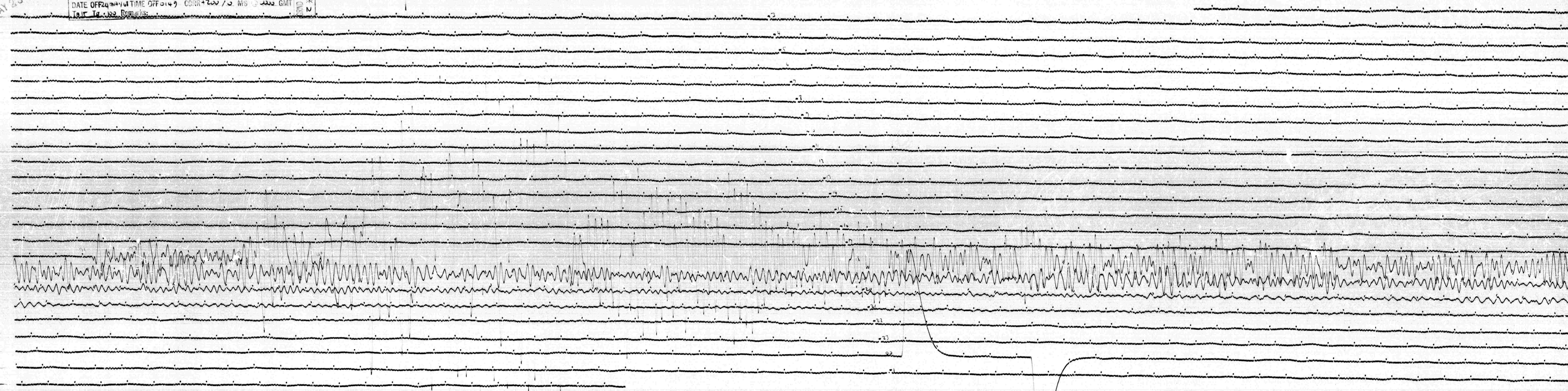


MAY 23 1968

STATION 389 COMP N MAG 375 CALCUR 0.8 GO.0085 N/A
 DATE ON 23 MAY 68 TIME ON 0217 CORR +210 / 0 MS @ 0000 GMT
 DATE OFF 24 MAY 68 TIME OFF 0149 CORR +200 / 0 MS @ 0000 GMT
 TAIL TO 100 Remarks:

BRAND MOT. ↑
 N



MAY 24 1968

389
L-43