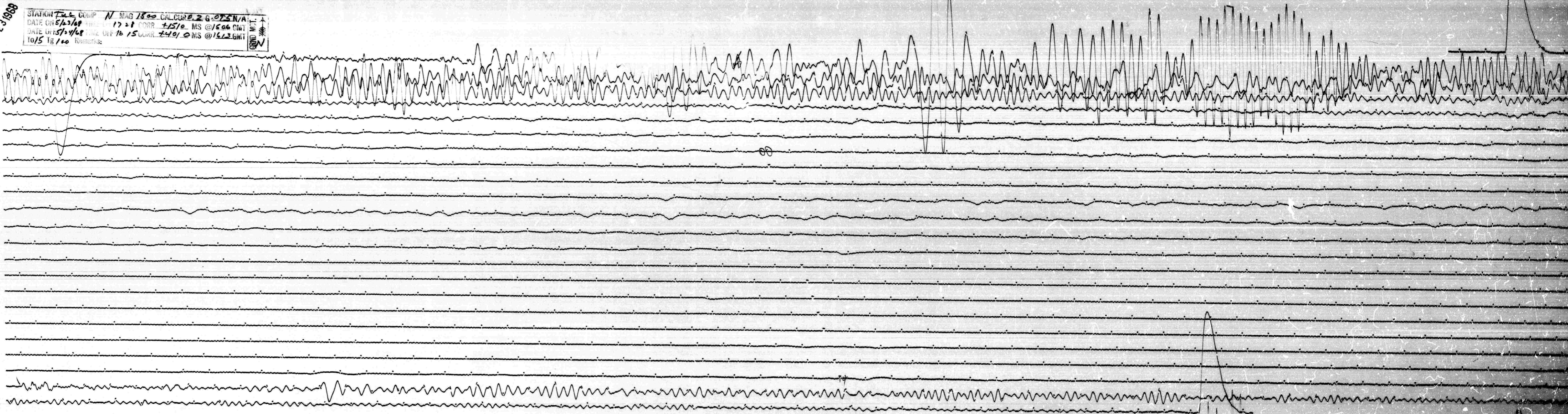


MAY 23 1968

STATION *F-4* COMP *N* MAG *1800* CAL CUR *0.2* G. *075N/A*
DATE ON *5/23/68* TIME *17 28* CORR *+1510* MS @ *1506* CWT
DATE OFF *5/24/68* TIME OFF *16 15* CORR *+4010* MS @ *1613* GWT
10/5 Ig 100 Remarks:

GROUND MOT.
↑
N



MAY 24 1968