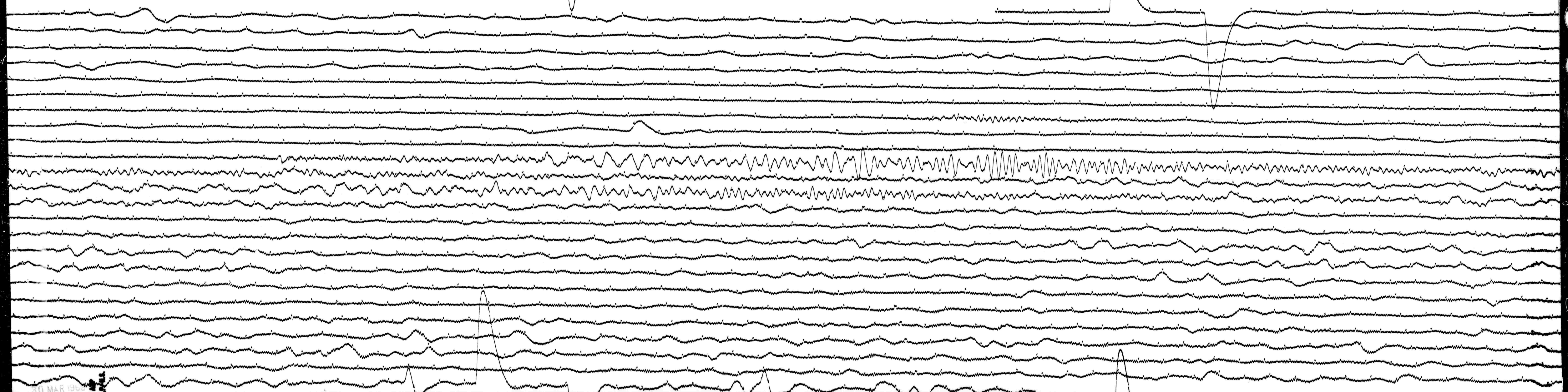


5 MAR 1965

STATION *414* COMP *11.5* MAG *7.2* CALC *0.2* G *20.8* N/A  
 DATE ON *5-28* TIME ON *0108* CORR *10.10* MS @ *0.00* GMT  
 DATE OFF *2-28* TIME OFF *0000* CORR *10.10* MS @ *0.00* GMT  
 To *1* Tg *100* Remarks:

COND MOT. ↑  
 65



30 MAR 1965