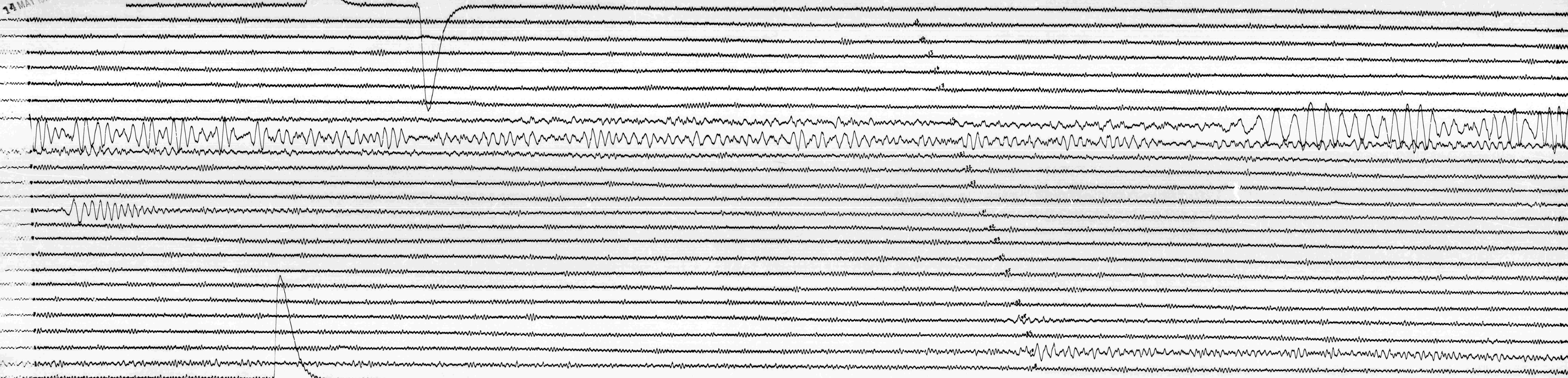


14 MAY 1970



STATION *NNA* COMP *2* MAG *3.000* CAL CUR *10* *0.1036* P/A
 DATE ON *5-14-70* ON *1130* CORR - / - *NS* @ *120* GMT
 DATE OFF *5-15-70* ON *1136* CORR *-060/0* *NS* @ *1155* GMT
 10/5 18/100 Remarks:

COND. INOT.

14 MAY 1970 03