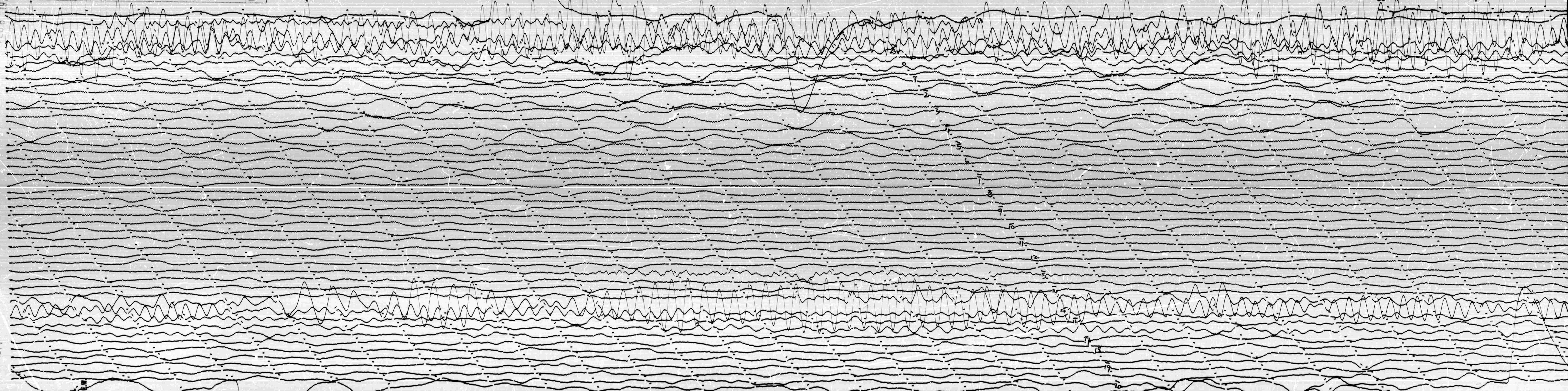


STATION W6-COMP E MAG 79 CAL CUR 0.4 G 0.93 N/A  
DATE ON FEB 8 71 TIME ON 2040 CORR 0 /- MS @ 2008 GMT  
DATE OFF FEB 9 71 TIME OFF 2035 CORR 0 /- MS @ 2007 GMT  
To IS Tg 100 Remarks:

GRAND MCT  
M

FEB 8 1971

FEB 9 1971



2040

2035

W6-COMP